

DreamLine™



Bathroom of Your Dreams™

JETTED STEAM SHOWERS

SHOWER ENCLOSURES

SHOWER COLUMNS

ANTIQUE VANITIES

CERAMIC VANITIES

GLASS VANITIES

STONE VANITIES

VESSEL SINKS

FAUCETS



Bath Authority™
BATHAUTHORITY.COM

PRODUCT CATALOG 2007



Bathroom of Your Dreams™

Thank you for your interest in Bath Authority.

We are one of the fastest growing global manufacturers of bathroom products for residential and commercial markets. With operations in Europe, Asia and United States and an expanding North American distribution network, Bath Authority provides its clients with innovative bathroom showers, steam rooms, vanities, faucets and specialty products under its **Bath Authority™** and **DreamLine™** brands.

Our mission is to provide bathroom fixtures and accessories of the highest quality, creative design and exceptional value. We meet these goals by building on a corporate culture of innovation, intense commitment to quality, attention to detail, high performance teams in all aspects of our business and a constant focus on our customers.

If you have been waiting to build the “Bathroom of Your Dreams”™ - choose Bath Authority™ DreamLine™ products to bring your bathroom design ideas to life.

A handwritten signature in black ink, appearing to read 'Val Shtraks', with a stylized flourish at the end.

Val Shtraks
Managing Partner
Bath Authority LLC

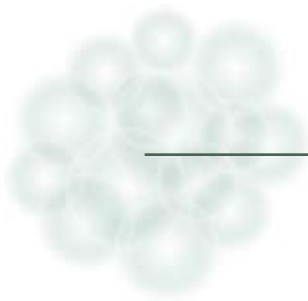


Table of contents

JETTED STEAM SHOWERS	4
SHOWER ENCLOSURES	8
SHOWER DOORS	14
SHOWER COLUMNS	16
ANTIQUE VANITIES	20
CERAMIC VANITIES	30
GLASS VANITIES	42
GLASS VESSEL SINKS	52
STONE VANITIES	54
STONE VESSEL SINKS	62
WATERFALL FAUCETS	65
VANITY AND BATH TUB FAUCETS	66

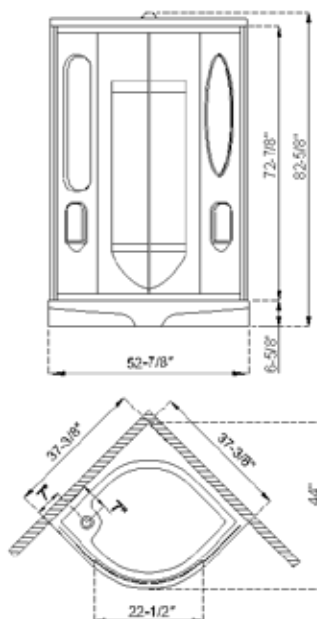
JETTED & STEAM SHOWERS



DreamLine™ Jetted and Steam showers transform your standard bathroom into a home spa. The perfectly designed high quality Acrylic/ABS single piece back wall, tray and roof form the main structure of the shower cabin. Individual valve controls for water massage jets, hand-held shower and top “rain shower” bring you the ultimate shower experience. An integrated thermostatic valve provides a constant pleasant water temperature for each shower session. Built-in seat and accessory compartments complete the thoughtful cabin design. Optional Steam Kit offers you yet another dimension in showering. Steam has been known through the ages to be of great benefit to both body and soul, and now DreamLine™ Steam Showers bring spa-style steam baths to your home.

TABLE OF CONTENTS

Pacifica	5
Oceana	6
Niagara	7



ATLANTICA

JETTED STEAM SHOWER

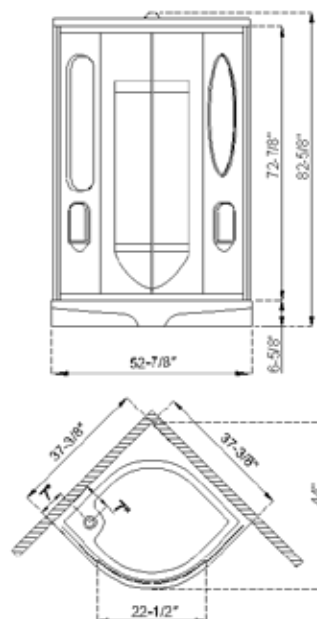
Standard Features:

- Fiberglass Reinforced Acrylic Tray with Leveling Legs
 - Single Piece Acrylic Back Wall
 - Six Adjustable Body Jets
 - Adjustable Hand Shower
 - Thermostatic Valve Control
 - 4-Positions Water Control Diverters
 - Integrated Acrylic Seat
 - Wall Mirror and Accessory Compartments
 - 1/4" Tempered Safety Glass
- Dimensions: 37 3/8" W x 37 3/8" D x 82 5/8" H

Optional Features:

- Roof Kit with "Tropical Rain" Shower
- Steam Kit - 2kW/110V Generator and On/Off Control

Model Number	Description
SHJC-1238386-01	Chrome Exterior Trim
SHJC-1238386-00	White Exterior Trim
SHRK-1138380-00	Roof Kit
SHSK-2000-00	Steam Kit 2kW



PACIFICA

JETTED STEAM SHOWER

Standard Features:

- Fiberglass Reinforced Acrylic Tray with Leveling Legs
 - Single Piece Acrylic Back Wall
 - Six Adjustable Body Jets
 - Adjustable Hand Shower
 - Thermostatic Valve Control
 - Individual Water Control Diverters
 - Integrated Acrylic Seat
 - Wall Mirror and Accessory Compartments
 - 1/4" Tempered Safety Glass
- Dimensions: 37 3/8" W x 37 3/8" D x 82 5/8" H

Optional Features:

- Roof Kit with "Tropical Rain" Shower
- Steam Kit - 2kW/110V Generator and On/Off Control

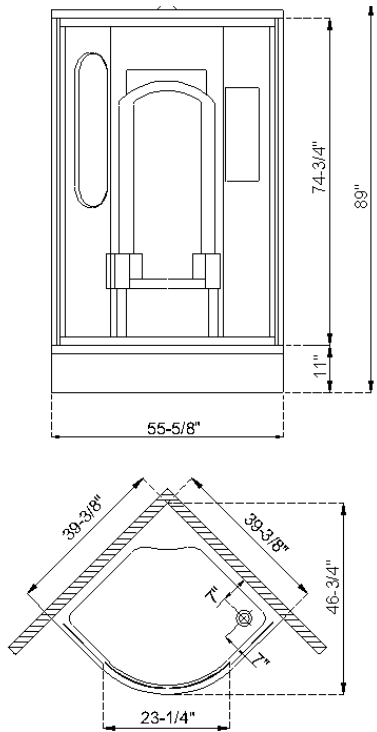
Model Number	Description
SHJC-1138386-01	Chrome Exterior Trim
SHJC-1138386-00	White Exterior Trim
SHRK-1138380-00	Roof Kit
SHSK-2000-00	Steam Kit 2kW

NIAGARA
JETTED STEAM SHOWER



- Standard Features:**
- Fiberglass Reinforced Acrylic Tray with Leveling Legs
 - Acrylic Roof with “Tropical Rain” Shower
 - Single Piece Acrylic Back Wall
 - Ten Adjustable Body Jets
 - Adjustable Hand Shower
 - Thermostatic Valve Control
 - Individual Water Control Diverters
 - Large Integrated Acrylic Seat
 - Foot Massager with Jets
 - Removable Acrylic Front Skirt
 - 1/4” Tempered Safety Glass
- Dimensions: 39 3/8” W x 39 3/8” D x 89” H

- Optional Features:**
- Steam Kit - 4kW/220V Generator and On/Off/Time/Temperature Control



Model Number	Description
SHJC-2140406-01	Chrome Exterior Trim
SHJC-2140406-00	White Exterior Trim
SHSK-4000-00	Steam Kit 4kW

OCEANA

JETTED STEAM SHOWER

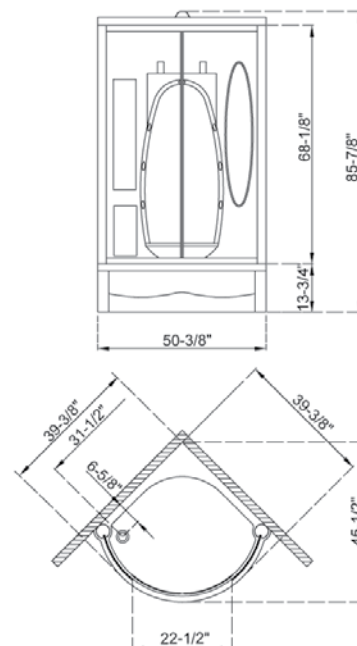


Standard Features:

- Fiberglass Reinforced Acrylic Tray with Leveling Legs
 - Single Piece Acrylic Back Wall
 - Six Adjustable Body Jets
 - Adjustable Hand Shower
 - Thermostatic Valve Control
 - Individual Water Control Diverters
 - Integrated Acrylic Seat
 - Wall Mirror and Accessory Compartments
 - 1/4" Tempered Safety Glass
- Dimensions: 37 3/8"W x 37 3/8" D x 82 5/8" H

Optional Features:

- Roof Kit with "Tropical Rain" Shower
- Steam Kit - 2kW/110V Generator and On/Off Control



Model Number	Description
SHJC-1138386-01	Chrome Exterior Trim
SHJC-1138386-00	White Exterior Trim
SHRK-1138380-00	Roof Kit
SHSK-2000-00	Steam Kit 2kW

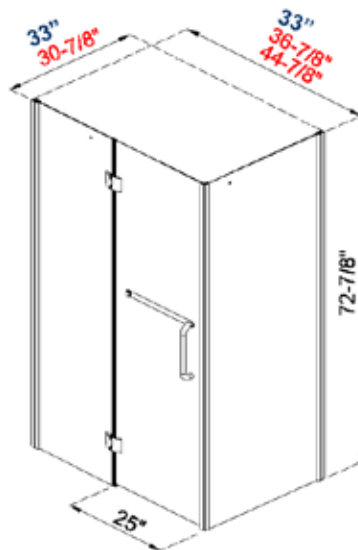
SHOWER ENCLOSURES



They are all very different - round, rectangular, neo-angle, D-shaped - but all of the DreamLine™ shower enclosure share the same basic lineage. All of these shower enclosures are made of tempered safety glass combined with anodized aluminum profiles. Glass may be installed on custom tiled trays or for streamlined installation may be combined with optional DreamLine™ Acrylic/ABS fiberglass reinforced trays. Available in a variety of sizes, shapes and finishes including chrome, brushed aluminum and white, the shower enclosures are designed for installation against tiled walls. Add a simple shower head or an advanced DreamLine™ Shower Column and create the Bathroom of Your Dreams™ with DreamLine™ shower enclosures.

TABLE OF CONTENTS

Quad	9
Crystal	9
Neo	10
Destiny	10
Domus	11
Circo	11
Enclosure Trays.....	12

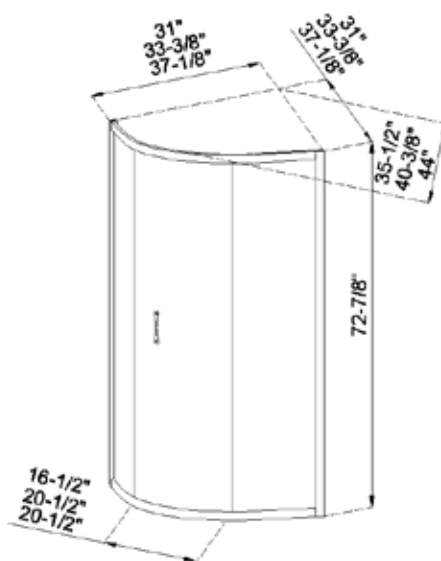


QUAD SHOWER ENCLOSURE

Features:

- Hinged door with full length magnetic door latch
- Available in 1/4" or 3/8" tempered safety glass
- Visible fixtures in chrome finish
- Anodized aluminum profiles
- Stainless steel hinges, door handles and top bar
- Reversible for "Right" or "Left" configuration
- Designed to install against tiled walls
- Optional fiberglass reinforced acrylic tray

Model Number	Glass Thickness	Size	Matching Tray
SHEN-1031376-01	1/4"	30 7/8" x 36 7/8" x 72 7/8"	SHTR-1034401(2)
SHEN-1031378-01	3/8"	30 7/8" x 36 7/8" x 72 7/8"	SHTR-1034401(2)
SHEN-1031456-01	1/4"	30 7/8" x 44 7/8" x 72 7/8"	SHTR-1034481(2)
SHEN-1031458-01	3/8"	30 7/8" x 44 7/8" x 72 7/8"	SHTR-1034481(2)



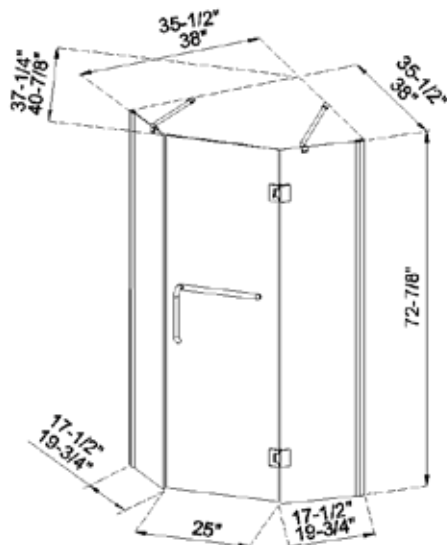
CRYSTAL SHOWER ENCLOSURE

Features:

- 1/4" tempered safety glass
- Sliding tempered glass door
- Visible fixtures in chrome finish
- Anodized aluminum profiles
- Reversible for "Right" or "Left" door opening
- Designed to install against tiled walls
- Optional fiberglass reinforced acrylic tray

Model Number	Size	Matching Tray
SHEN-4132326-01	31" x 31" x 72 7/8"	SHTR-4034340
SHEN-4135356-01	33 3/8" x 33 3/8" x 72 7/8"	SHTR-4036360
SHEN-4138386-01	37 1/8" x 37 1/8" x 72 7/8"	SHTR-4040400

SHOWER ENCLOSURES

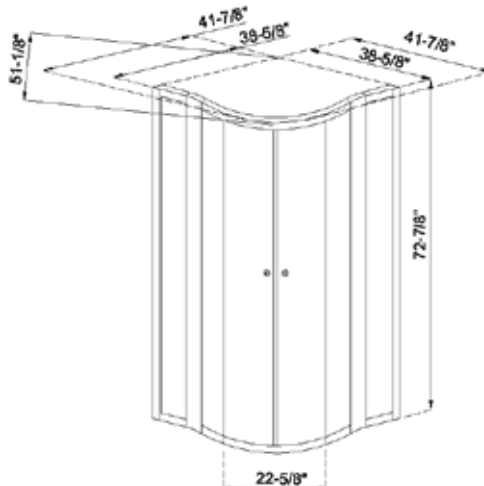


NEO SHOWER ENCLOSURE

Features:

- Hinged Door with full length magnetic door latch
- Available in 1/4" or 3/8" tempered safety glass
- Frameless glass design
- Visible fixtures in chrome finish
- Anodized aluminum profiles
- Stainless steel hinges, door handles and top glass support bars
- Reversible for "Right" or "Left" door opening
- Designed to install against tiled walls
- Optional fiberglass reinforced acrylic tray

Model Number	Glass Thickness	Size	Matching Tray
SHEN-2036366-01	1/4"	35 1/2" x 35 1/2" x 72 7/8"	SHTR-2038380
SHEN-2036368-01	3/8"	35 1/2" x 35 1/2" x 72 7/8"	SHTR-2038380
SHEN-2038386-01	1/4"	38" x 38" x 72 7/8"	SHTR-2041410
SHEN-2038388-01	3/8"	38" x 38" x 72 7/8"	SHTR-2041410

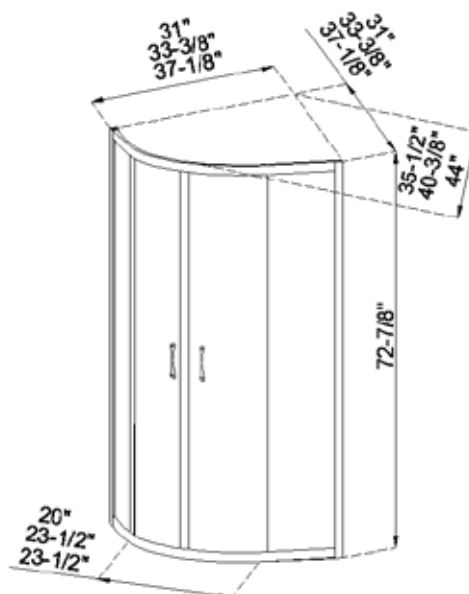


DESTINY SHOWER ENCLOSURE

Features:

- 1/4" Tempered safety glass
- Two sliding tempered glass doors
- Designed to install against tiled walls
- Optional fiberglass reinforced acrylic tray
- Available in chrome or white exterior trim

Model Number	Exterior Trim	Size	Matching Tray
SHEN-6038386-01	Chrome	38 5/8" x 38 5/8" x 72 7/8"	SHTR-6040400
SHEN-6038386-00	White	38 5/8" x 38 5/8" x 72 7/8"	SHTR-6040400

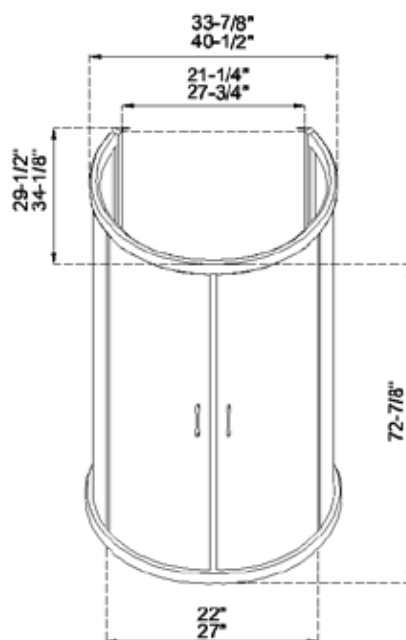


DOMUS SHOWER ENCLOSURE

Features:

- 1/4" tempered safety glass
- Sliding tempered glass doors
- Visible fixtures in chrome finish
- Anodized aluminum profiles
- Designed to install against tiled walls
- Optional fiberglass reinforced acrylic tray

Model Number	Size	Matching Tray
SHEN-4032326-01	31" x 31" x 72 7/8"	SHTR-4034340
SHEN-4035356-01	33 3/8" x 33 3/8" x 72 7/8"	SHTR-4036360
SHEN-4038386-01	37 1/8" x 37 1/8" x 72 7/8"	SHTR-4040400



CIRCO SHOWER ENCLOSURE

Features:

- 1/4" tempered safety glass
- Sliding tempered glass doors
- Visible fixtures in chrome finish
- Anodized aluminum profiles
- Designed to be installed flat against tiled wall
- Optional fiberglass reinforced acrylic tray

Model Number	Size	Matching Tray
SHEN-5030346-01	29 1/2" x 33 7/8" x 72 7/8"	SHTR-5033390
SHEN-5034416-01	34 1/8" x 40 1/2" x 72 7/8"	SHTR-5036430

SHOWER ENCLOSURE TRAYS

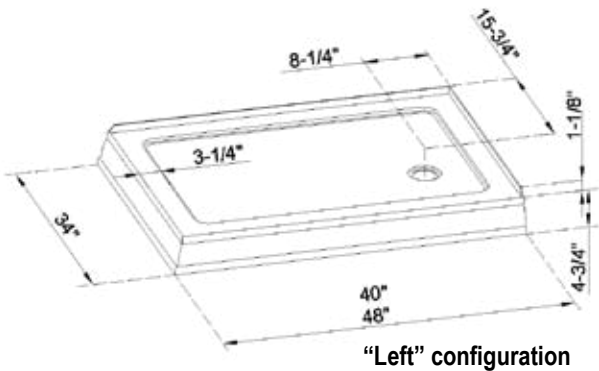
DreamLine high gloss acrylic shower trays (shower receptors) may be used in a custom shower project or combined with Dream-Line Shower Enclosures for a complete shower installation. All of the shower trays come standard with slip-resistant textured bottom patterns and integrated tiling flanges. Each shower tray is fiberglass reinforced and comes with a 3 1/4 inch opening ready for a compression fitting drain. Choose from a variety of sizes and for some models a "Right" or "Left" installation option.



QUAD SHOWER ENCLOSURE TRAY

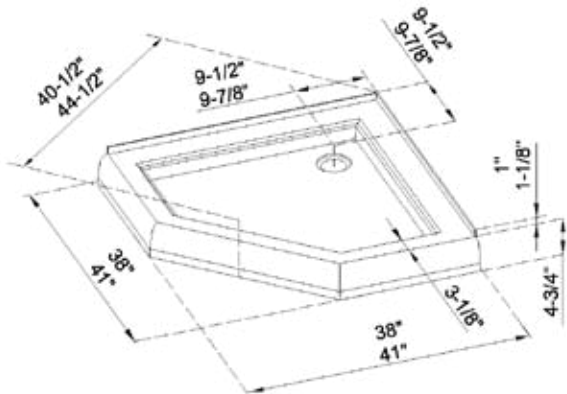


"Right" configuration



Model Number	Configuration	Size
SHTR-1034401	Left	34" x 40" x 4 1/2"
SHTR-1034402	Right	34" x 40" x 4 1/2"
SHTR-1034481	Left	34" x 48" x 4 1/2"
SHTR-1034482	Right	34" x 48" x 4 1/2"

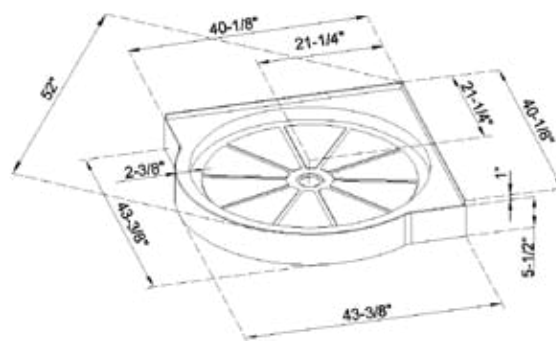
NEO SHOWER ENCLOSURE TRAY



Model Number	Size
SHTR-2038380	38" x 38" x 4 1/2"
SHTR-2041410	41" x 41" x 4 1/2"

DESTINY

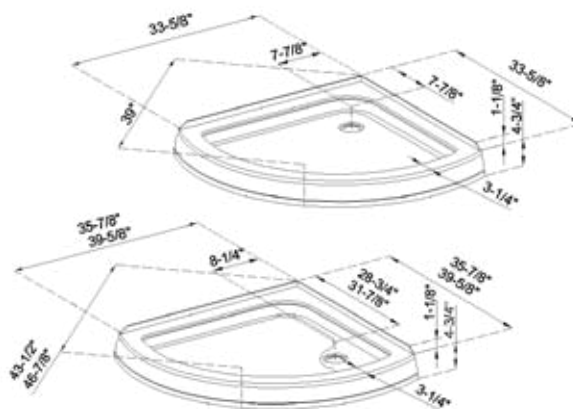
SHOWER ENCLOSURE TRAY



Model Number	Size
SHTR-6040400	40 1/8" x 40 1/8" x 5 1/2"

DOMUS / CRYSTAL

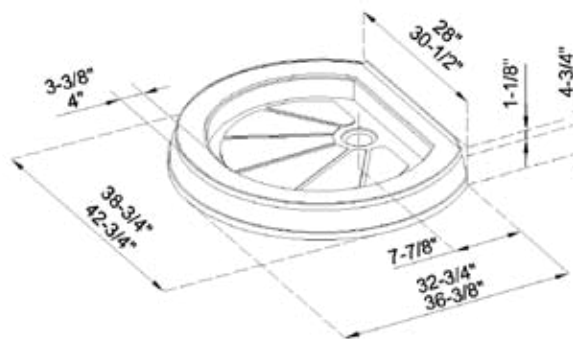
SHOWER ENCLOSURE TRAY



Model Number	Size
SHTR-4034340	33 5/8" x 33 5/8" x 4 1/2"
SHTR-4036360	35 7/8" x 35 7/8" x 4 1/2"
SHTR-4040400	39 5/8" x 39 5/8" x 4 1/2"

CIRCO

SHOWER ENCLOSURE TRAY



Model Number	Size
SHTR-5033390	32 3/4" x 38 3/4" x 4 1/2"
SHTR-5036430	36 3/8" x 42 3/4" x 4 1/2"

SHOWER DOORS

AQUA SHOWER DOOR



Chrome
SHDR-3048726-01

Features:

- Chrome finish
- Integrated handle/towel bar
- Tempered 1/4" glass
- Anodized aluminum wall profile
- Stainless steel hinges and wall support

DreamLine frameless hinged AQUA door and sliding shower door collections offer flawless function and elegance. All doors are made of tempered glass complimented in some models by anodized aluminum profiles and frames in Chrome or White finish. VISIONS and INFINITY sliding shower doors are designed for smooth and quiet operation with integrated rollers and are available in 72" height for shower installation or 58" for tub installation. The width of each door is adjustable between 56"-60".



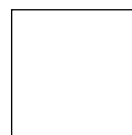
Shown with optional AMAZON tray



VISIONS SHOWER DOOR

Features:

- Chrome or White finish
- Two sliding doors
- Tempered 1/4" glass
- Anodized aluminum profiles and frames
- Available in 58" or 72" height



White

SHDR-1160726-00 (72" H)
SHDR-1160586-00 (58" H)



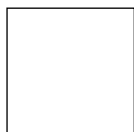
Chrome

SHDR-1160726-01 (72" H)
SHDR-1160586-01 (58" H)

INFINITY SHOWER DOOR

Features:

- Chrome or White finish
- Single sliding door design
- Reversible for "Left" or "Right" door opening
- Tempered 1/4" glass
- Anodized aluminum profiles and frames
- Available in 58" or 72" height



White

SHDR-1060726-00 (72" H)
SHDR-1060586-00 (58" H)



Chrome

SHDR-1060726-01 (72" H)
SHDR-1060586-01 (58" H)



Shown with optional AMAZON tray

SHOWER COLUMNS



Turn your ordinary shower into a home spa with a DreamLine™ shower panel. With features like a hand held shower, adjustable body massage jets, large top shower head and individual water controls, these advanced hydrotherapy panels make the standard shower head obsolete. Add other elements of design like shelves, mirrors and accessory compartments, and your shower not only gets a beauty facelift but also becomes more functional. Installation is easy with only a hot and cold water connect and fast mounting on wall-attached brackets. Choose from models made of aluminum, acrylic or stone and a variety of options for the right solution for your shower.

TABLE OF CONTENTS

SHCM-2648	17
SHCM-2358	17
SHCM-2050	17
SHCM-2718	18
SHCM-2015	18
SHCM-2728	18
SHCM-3031	19
SHCM-1007	19
SHCM-1021	19

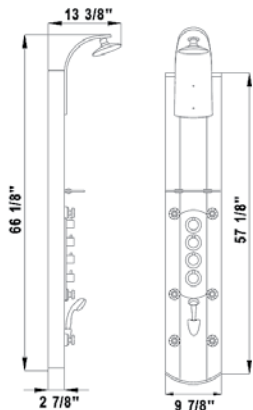
SHCM-2648

SHOWER COLUMN



Features:

- Anodized aluminum body in satin finish
- Self-cleaning 6" overhead shower head
- Six adjustable body jets
- Multifunction 5" hand shower and holder
- Thermostatic valve control
- Individual water control diverters
- Shelf for shower accessories
- Visible plumbing fixtures in chrome finish
- Back-to-wall or corner installation



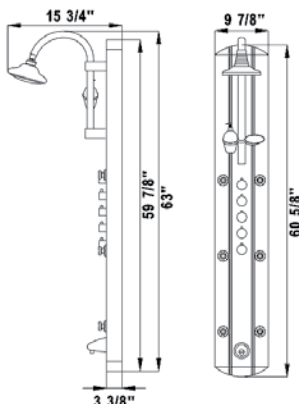
SHCM-2358

SHOWER COLUMN



Features:

- Anodized aluminum body in satin finish
- Self-cleaning 6" overhead shower head
- Six adjustable body jets
- Multifunction 5" hand & wall holder
- Integrated tub filler spout
- Thermostatic valve control
- Individual water control diverters
- Shower accessory holder
- Visible plumbing fixtures in chrome finish
- Back-to-wall or corner installation



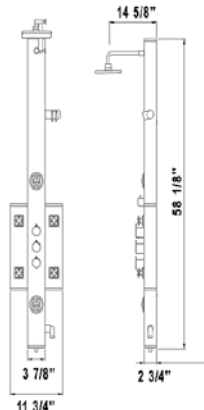
SHCM-2050

SHOWER COLUMN



Features:

- Anodized aluminum body in satin finish
- Self-cleaning 7" square overhead shower
- Four square and two round body jets
- Multifunction square hand shower
- 3 function water control diverter (jets, top shower and hand shower)
- On/Off valve control
- Thermostatic valve control
- Visible plumbing fixtures in chrome finish
- Back-to-wall installation



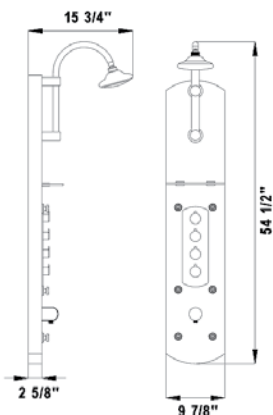
SHOWER COLUMNS

SHCM-2718
SHOWER COLUMN



Features:

- Anodized aluminum body in satin finish
- Self-cleaning 6" overhead shower head
- Six adjustable body jets
- Multifunction 5" hand shower
- Thermostatic valve control
- Individual water control diverters
- Shower accessory shelf
- Visible plumbing fixtures in chrome finish
- Back-to-wall or corner installation

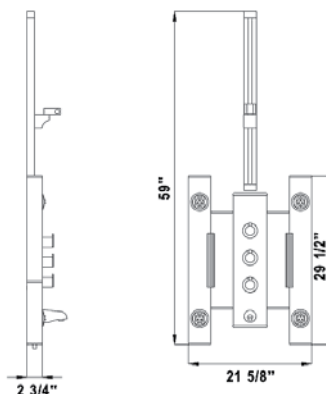


SHCM-2015
SHOWER COLUMN



Features:

- Anodized aluminum body in satin finish
- 6" overhead/handheld shower
- Slide bar for shower head
- 4 body jets on movable side panels
- Integrated tub filler spout
- 3 function water control diverter
- On/Off valve control
- Thermostatic valve control
- Visible plumbing fixtures in chrome finish
- Back-to-wall installation

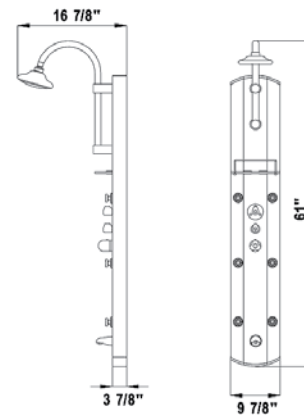


SHCM-2728
SHOWER COLUMN



Features:

- Anodized aluminum body in satin finish
- Self-cleaning 6" overhead shower head
- Six adjustable body jets
- Multifunction 5" hand shower
- Integrated tub filler spout
- 3 function water control diverter
- On/Off valve control
- Thermostatic valve control
- Visible plumbing fixtures in chrome finish
- Back-to-wall or corner installation



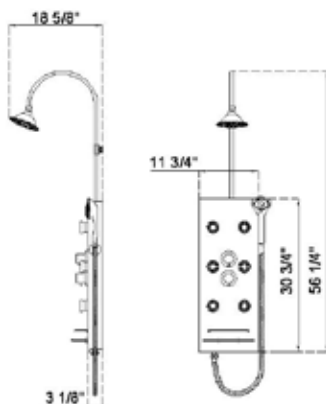
SHCM-3031

SHOWER COLUMN



Features:

- Natural stone body (stone options)
- Overhead shower
- Six adjustable body jets
- Adjustable hand shower
- Thermostatic valve control
- Water control diverter
- Shower accessory shelf
- Visible plumbing fixtures in chrome finish
- Back-to-wall installation



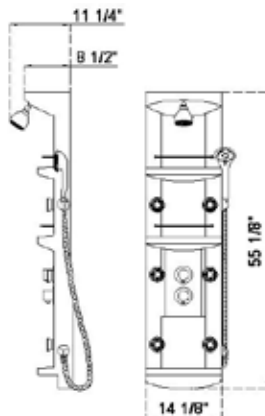
SHCM-1007

SHOWER COLUMN



Features:

- White acrylic body
- Multifunction overhead shower
- Six adjustable body jets
- Adjustable hand shower
- Thermostatic valve control
- Water control diverter
- Visible plumbing fixtures in chrome finish
- Back-to-wall installation



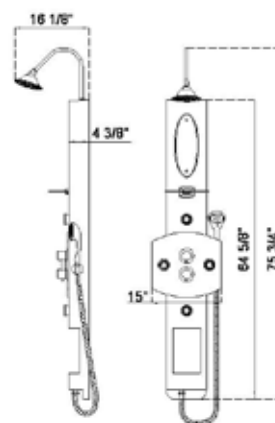
SHCM-1021

SHOWER COLUMN



Features:

- White acrylic body
- Overhead shower
- 4 adjustable body jets
- Adjustable hand shower
- Thermostatic valve control
- Water control diverter
- Shower accessory shelf
- Integrated mirror & storage compartment
- Visible plumbing fixtures in chrome finish
- Back-to-wall installation



ANTIQUE VANITIES

DreamLine™ Antique Vanity designs bring you back to an elegant age of detail, beauty and character in bathroom furniture. The unique synergy of designs of yesteryear, advanced materials, exceptional finishing techniques and skilled artisans bring to life our Antique Vanity collection. Natural stone countertops and high quality porcelain sinks add the final touch to each of these bathroom centerpieces. Available in a number of standard finishes, variety of sizes from small single sink to a spacious double, and a great choice of detailed designs you are sure to find the perfect vintage style vanity for your project. All of these vanities have ample storage, solid wood legs and frame, and hand crafted wood carving. The drain, trap and faucets are also standard with all of these vanities and four distinct mirror styles are available in matching color to complete your bathroom design.

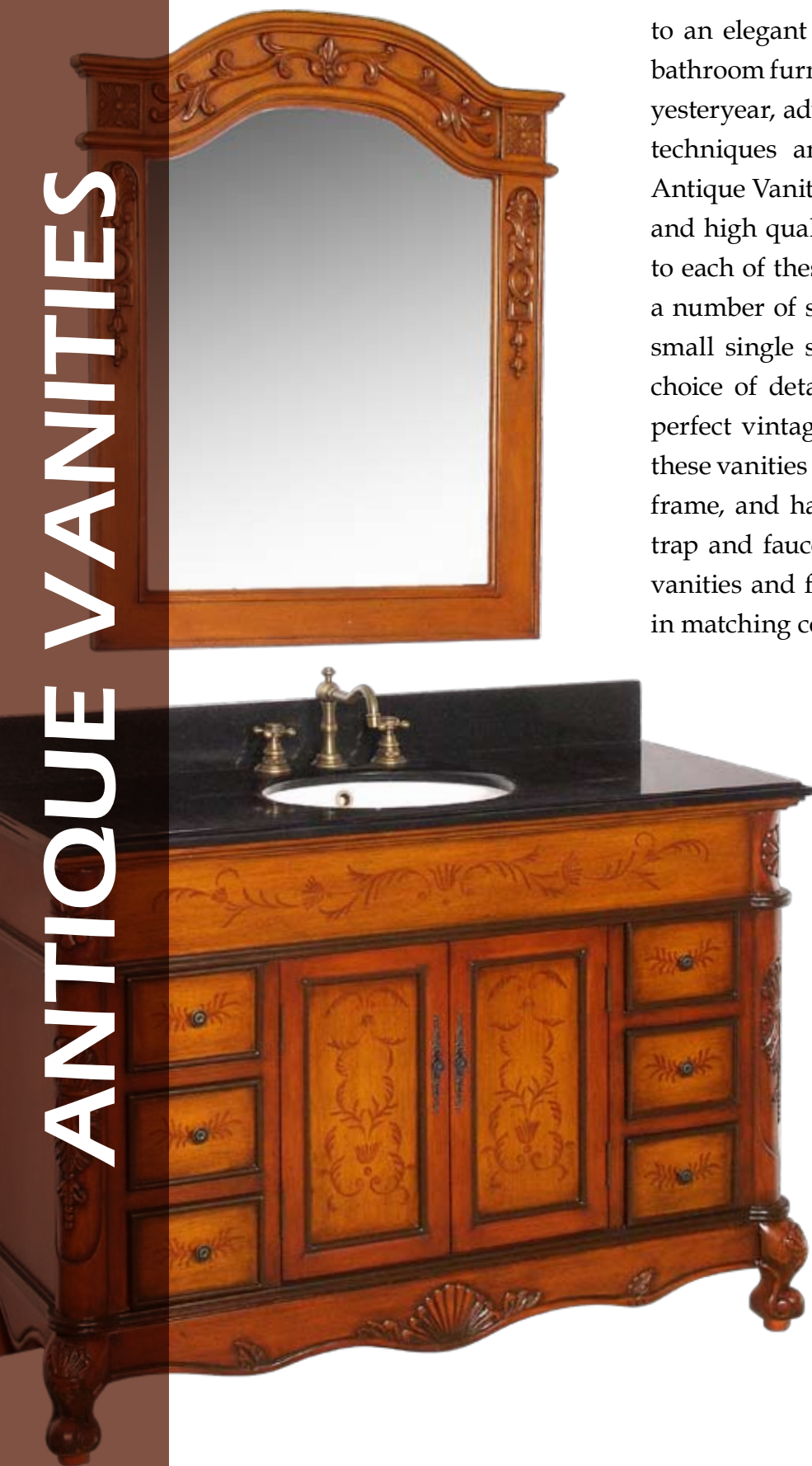


TABLE OF CONTENTS

ANTIQUE VANITIES

DLVBJ-002	21
DLVBJ-004	22
DLVBJ-005	23
DLVBJ-006	24
DLVBJ-011	25
DLVBJ-014	26
DLVBJ-015	27

ANTIQUE MIRRORS

DLMBJ-1	28
DLMBJ-2	28
DLMBJ-3	29
DLMBJ-4	29

Featuring double sinks with decorative carved accents, this vanity is sure to highlight any bathroom. Three working center drawers and two large side storage compartments with doors provide ample storage. A classic, warm wood finish is available in three colors – Antique White with off-white marble countertop, Antique Cherry and Antique Oak with black granite countertop. All countertops come with add-on backsplashes. Four distinct mirror styles are available in matching color finish to complete your bathroom design.

DLVBJ - 002

ANTIQUE VANITY



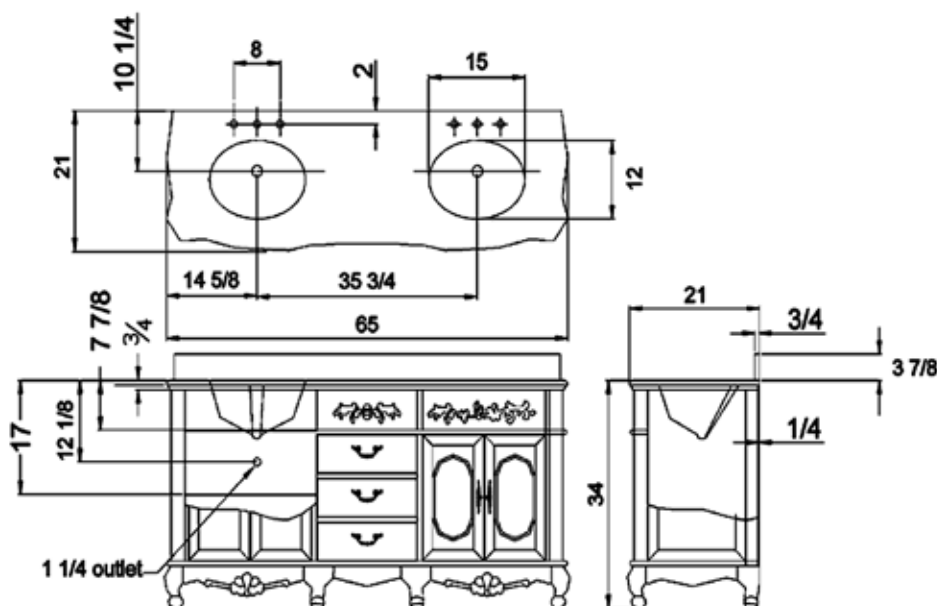
DLVBJ-002 Antique Cherry



DLVBJ-002 Antique Oak



DLVBJ-002 Antique White



Features:

- Solid wood (Birch) cabinet frame and legs
- Vanity doors and sides made of high quality wood MDF
- Under-mount white color porcelain oval shape sinks with overflows
- 3/4" thick hand-polished marble or granite top and backsplash
- Nitrocellulose Wood Lacquer (NC) applied for water protection and shine
- Three working center drawers and two side compartments with doors
- 3-hole faucet & plumbing accessories in antique bronze finish.
- Dimensions: 65" W x 21" D x 34" H

ANTIQUE VANITIES

DLVBJ - 004 ANTIQUE VANITY

Hand painted accents add to the unique design of this vanity. Available in Antique Green finish with green granite countertop or in classic Antique Oak with black granite countertop. All countertops come with add-on backsplashes. Six drawers (three on left and three on right of the vanity) and a center storage compartment with two hinged doors provide for storage of toiletries. Four distinct mirror styles are available in matching color finish to complete your bathroom design.



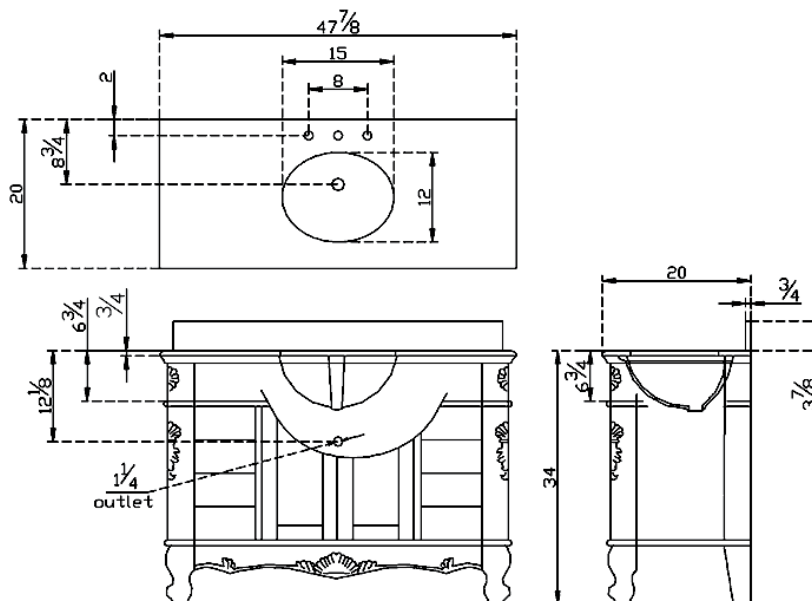
DLVBJ-004 Antique Oak



DLVBJ-004 Antique Green

Features:

- Solid wood (Birch) cabinet frame and legs
- Vanity doors and sides made of high quality wood MDF
- Under-mount white color porcelain oval shape sink with overflow
- 3/4" thick hand-polished granite top and backsplash
- Nitrocellulose Wood Lacquer (NC) applied for water protection and shine
- Six side drawers and central compartment with hinged doors
- Hand painted designs on front and cabinet doors
- 3-hole faucet & plumbing accessories in antique bronze finish included.
- Dimensions: 47 7/8" W x 20" D x 34" H



Extensive hand carving on doors, corners and legs of this vanity give it a rich Victorian feel. Available in classic Antique Oak or Antique Cherry finish with black granite countertop. All countertops come with add-on backsplashes. Four hinged doors provide access for storage of bathroom accessories. Four distinct mirror styles are available in matching color finish to complete your bathroom design.

DLVBJ - 005

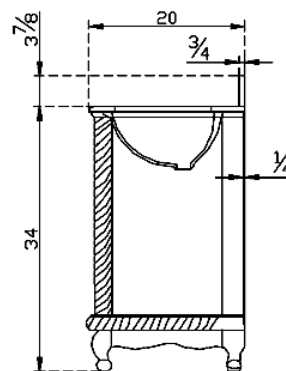
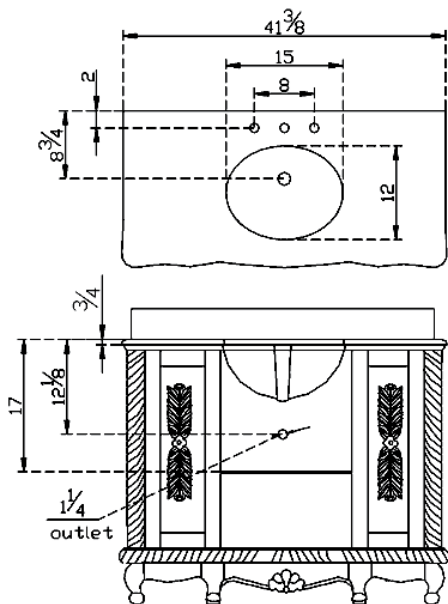
ANTIQUE VANITY



DLVBJ-005 Antique Cherry



DLVBJ-005 Antique Oak



Features:

- Solid wood (Birch) cabinet frame and legs
- Vanity doors and sides made of high quality wood MDF
- Under-mount white color porcelain oval shape sink with overflow
- 3/4" thick hand-polished black granite top and backsplash
- Nitrocellulose Wood Lacquer (NC) applied for water protection and shine
- Four front doors open to vanity storage compartments
- 3-hole faucet & plumbing accessories in antique bronze finish included.
- Dimensions: 41 3/8" W x 20"D x 34"H

ANTIQUE VANITIES



DLVBJ-006 Antique Cherry



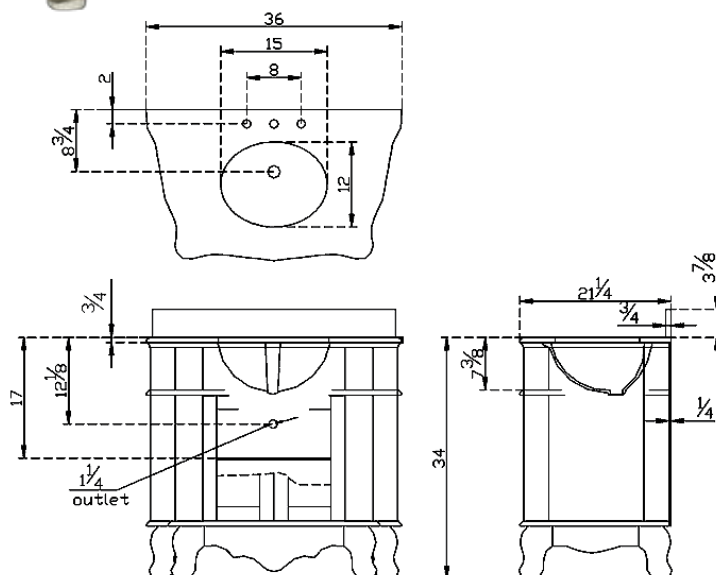
DLVBJ-006 Antique Oak

DLVBJ - 006 ANTIQUE VANITY

Two large front doors with hand carved detail open to a large storage compartment. Additional carving on side, corners and legs of the vanity add intricate details to this mid-size vintage style vanity. Available in three colors – Antique White with off-white marble countertop, Antique Cherry and Antique Oak with black granite countertop. Four distinct mirror styles are available in matching color finish to complete your bathroom design.



DLVBJ-006 Antique White



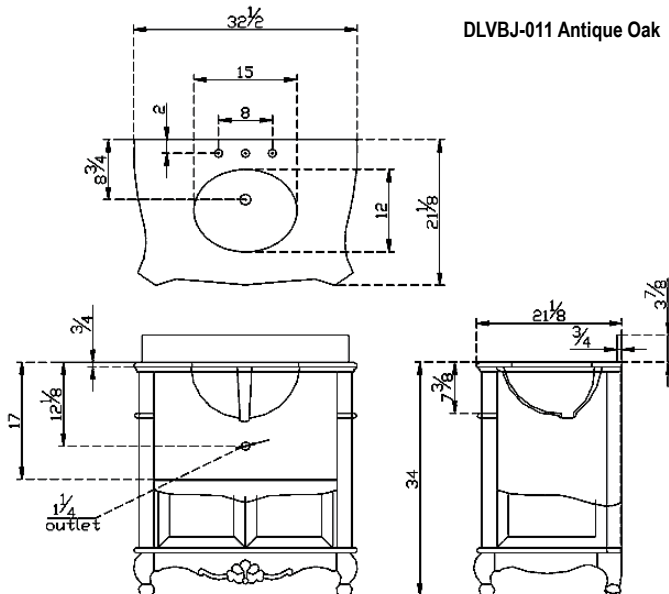
Features:

- Solid wood (Birch) cabinet frame and legs
- Vanity sides made of high quality wood MDF
- Under-mount white color porcelain oval shape sink with overflow
- 3/4" thick marble or granite top and backsplash
- Nitrocellulose Wood Lacquer (NC) applied for water protection and shine
- Two front doors open to a storage compartment
- 3-hole faucet & plumbing accessories in antique bronze finish included.
- Dimensions: 36" W x 21 1/4" D x 34" H

An elegant smaller size antique vanity with two large front doors and hand carved details on top of the doors, vanity corners and legs adds a perfect element of style to a small Victorian bathroom. The simple yet elegant design is further enhanced by the slight curves of cabinet sides. Available in three colors – Antique White with off-white marble countertop, Antique Cherry and Antique Oak with black granite countertop. Four distinct mirror styles are available in matching color finish to complete your bathroom design.



DLVBJ-011 Antique Oak



DLVBJ - 011 ANTIQUE VANITY



DLVBJ-011 Antique White



DLVBJ-011 Antique Cherry

Features:

- Solid wood (Birch) cabinet frame and legs
- Vanity doors and sides made of high quality wood MDF
- Under-mount white color porcelain oval shape sink with overflow
- 3/4" thick hand-polished marble or granite top and backsplash
- Nitrocellulose Wood Lacquer (NC) applied for water protection and shine
- Two front doors open to a vanity storage compartment
- 3-hole faucet & plumbing accessories in antique bronze finish included.
- Dimensions: 32 1/2" W x 21 1/8" D x 34" H

ANTIQUE VANITIES

DLVBJ - 014 ANTIQUE VANITY

An elegant smaller size antique vanity with two working drawers is the perfect addition to any bathroom. Hand carved wood detail adds elegance to this vintage style vanity. The simple yet elegant design is enhanced by the slight curve of cabinet sides. Available in Antique Cherry and Antique Oak with black granite countertop. Mirrors are available in matching finish to complete the bathroom design.



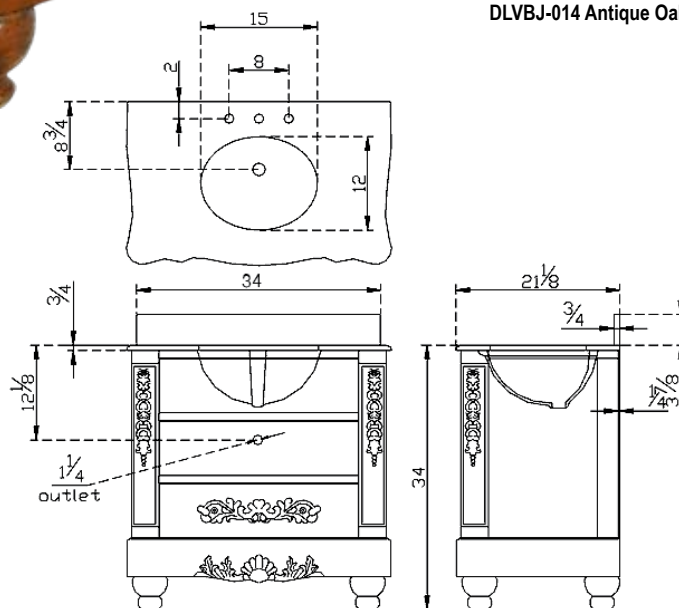
DLVBJ-014 Antique Cherry



DLVBJ-014 Antique Oak

Features:

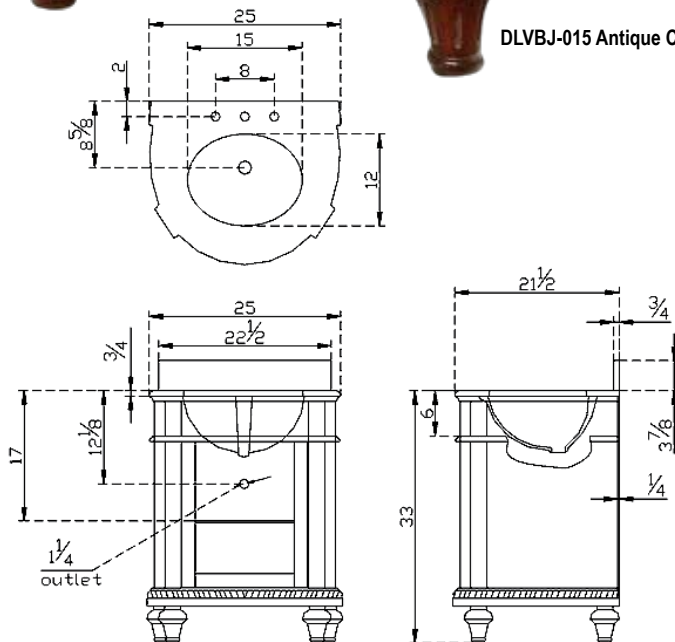
- Solid wood (Birch) cabinet frame and legs
- Vanity drawers and sides made of high quality wood MDF
- Under-mount white color porcelain oval shape sink with overflow
- 3/4" thick hand-polished black granite top and backsplash
- Nitrocellulose Wood Lacquer (NC) applied for water protection and shine
- Two working drawers and one decorative
- 3-hole faucet & plumbing accessories in antique bronze finish included
- Dimensions: 34" W x 21 1/8" D x 34" H



This elegant small vanity has beautiful carving on door and all cabinet surfaces. The large single door opens on two hinges to a storage space for bathroom accessories. The design is further enhanced by the cabinet curve. Available in three colors - Antique White with off-white marble countertop, Antique Cherry and Antique Oak with black granite countertop. Mirrors styles are available in matching finish.



DLVBJ-015 Antique Cherry



DLVBJ - 015 ANTIQUE VANITY



DLVBJ-015 Antique White



DLVBJ-015 Antique Oak

Features:

- Solid wood (Birch) cabinet frame and legs
- Vanity door and sides made of wood MDF
- Under-mount white porcelain oval shape sink with overflow
- 3/4" thick hand-polished marble or granite top and backsplash
- Nitrocellulose Wood Lacquer (NC) applied for water protection and shine
- One front hinged door opens to a vanity storage compartment
- 3-hole faucet & plumbing accessories in antique bronze finish included.
- Dimensions: 25" W x 22 1/2" D x 33" H

ANTIQUE VANITY MIRRORS



DLMBJ-1 Antique Oak



DLMBJ-1 Antique Green



DLMBJ-1 Antique White



DLMBJ-1 Antique Cherry

DLMBJ - 001 ANTIQUE VANITY MIRROR

- Solid wood frames with hand carving.
- Finish matches available vanity cabinets.
- Dimensions: 32" W x 38" H



DLMBJ-2 Antique Cherry



DLMBJ-2 Antique Green



DLMBJ-2 Antique Oak



DLMBJ-2 Antique White

DLMBJ - 002 ANTIQUE VANITY MIRROR

- Solid wood frames with hand carving.
- Finish matches available vanity cabinets.
- Dimensions: 28" W x 40" H



DLMBJ-3 Antique White



DLMBJ-3 Antique Green



DLMBJ-3 Antique Cherry



DLMBJ-3 Antique Oak

DLMBJ - 003

ANTIQUE VANITY MIRROR

- Solid wood frames with hand carving.
- Finish matches available vanity cabinets.
- Dimensions: 32" W x 38" H



DLMBJ-4 Antique Green



DLMBJ-4 Antique White



DLMBJ-4 Antique Oak



DLMBJ-4 Antique Cherry

DLMBJ - 004

ANTIQUE VANITY MIRROR

- Solid wood frames with hand carving.
- Finish matches available vanity cabinets.
- Dimensions: 30" W x 36" H

CERAMIC VANITIES

The amazing DreamLine™ Ceramic Sink Vanity collection offers style, storage, superior design and lots of substance. From traditional looks to modern styles - there is much to choose from. Small, medium or large; light wood finish or dark; single sink or double - these ceramic vanities have natural stone countertops and high quality porcelain sinks. Some of the vanities in the collection are designed with an elegant single piece porcelain countertop sink - which is both beautiful and easy to care for. Add an optional mirror or choose a special faucet to customize the vanity of your choice.



TABLE OF CONTENTS

CERAMIC VANITIES

DLVRB-102	31
DLVRB-117	32
DLVRB-123	33
DLVRB-125	34
DLVRB-142	35
DLVRB-313	36
DLVRB-133	37
DLVRB-314-147	38
DLVRB-314-64	39
DLVRB-314-86	39
DLVRB-314-108	39
DLVRB-315-147	40
DLVRB-315-64	41
DLVRB-315-86	41
DLVRB-315-108	41



DLVRB-102 Red Oak

This compact bathroom vanity model offers a simple solution for contemporary bathroom styling. Even with its small footprint, this vanity offers an oversized porcelain sink and storage cabinet. Base cabinet is supplied fully assembled and available in four colors - White, Ivory, White Oak and Red Oak. Add optional faucet and mirror to complete the vanity design.

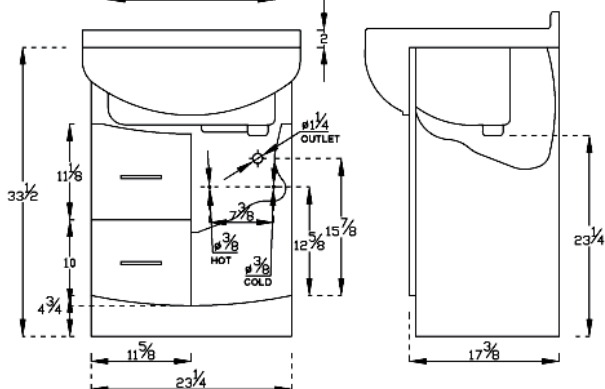
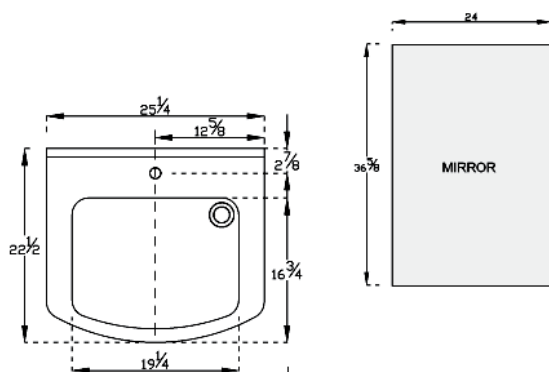


DLVRB-102 White

DLVRB-102 CERAMIC VANITY



DLVRB-102 Ivory



Features:

- Vanity cabinet made of quality MDF
- One piece white porcelain basin with overflow ready for single hole faucet
- Two drawers and one side storage compartment with door
- Adjustable self closing door hinges
- Available in White, Ivory, Red Oak (wood veneer), White Oak (wood veneer) colors
- Water resistant polyurethane finish
- Optional matching mirror

Dimensions: 25 1/4"W x 22 1/2"D x 33 1/2"H



DLVRB-102 White Oak

CERAMIC VANITIES

DLVRB-117 CERAMIC VANITY



DLVRB-117 Ivory



DLVRB-117 White Oak

Features:

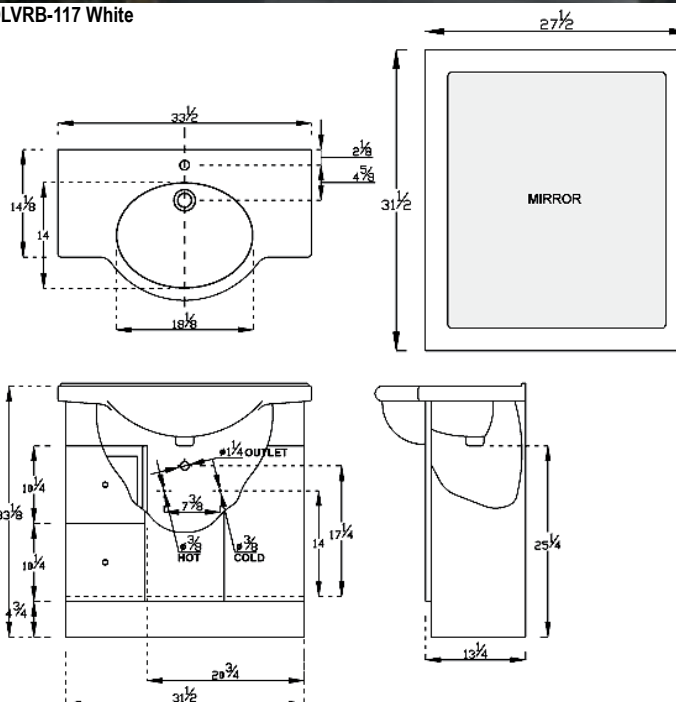
- Vanity cabinet made of quality wood MDF
- One piece white porcelain basin with overflow ready for single hole faucet
- Two drawers and a two door of a storage compartment
- Adjustable self closing door hinges
- Available in Ivory, White and White Oak (wood veneer) colors
- Durable water resistant polyurethane finish
- Optional matching mirror

Dimensions: 33 1/2"W x 20 1/4"D x 33 1/8"H

A practical vanity with an elegant single piece porcelain countertop sink. Two easy glide drawers and a two door lower cabinet provide generous storage space for toiletries. The base cabinet, which is available in White, Ivory and White Oak colors, comes fully assembled. Add optional faucet and mirror to complete the vanity design.



DLVRB-117 White





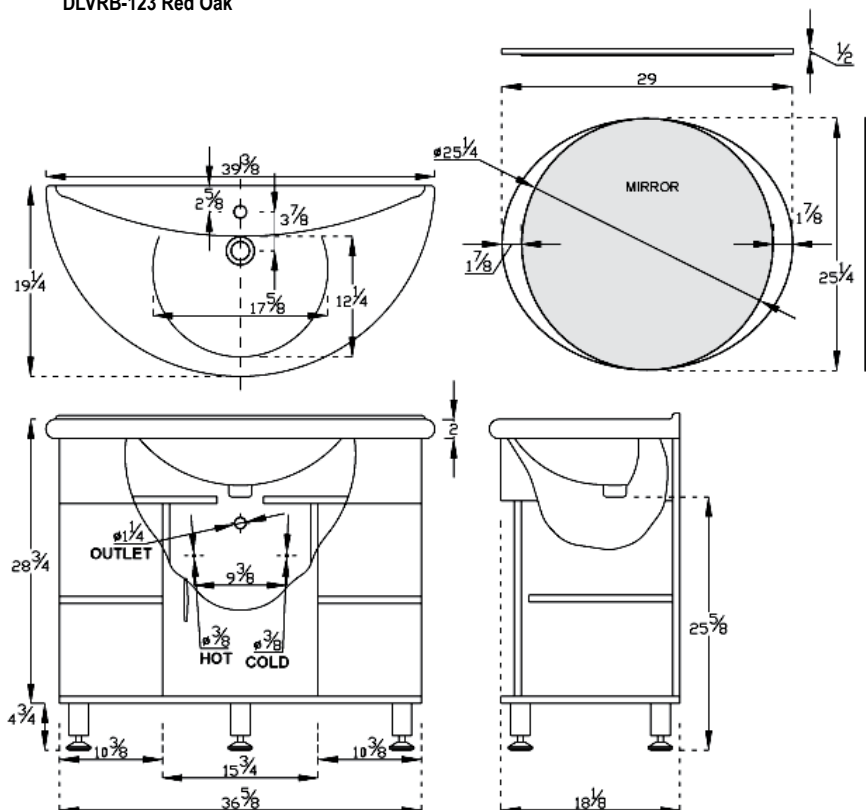
DLVRB-123 Red Oak

DLVRB-123 CERAMIC VANITY

Unique semi-circle design of this vanity is both functional and beautiful. A single piece semi-circular porcelain countertop sink, four side shelves and under-sink storage compartment complete the design of this vanity. The cabinet is available in Red Oak and Walnut colors and comes fully assembled. Add optional faucet and mirror to complete the vanity design.



DLVRB-123 Walnut



Features:

- Vanity cabinet made of quality wood MDF
- One piece white porcelain basin with overflow ready for single hole faucet
- One center door of storage cabinet and four side shelves
- Adjustable self closing door hinges
- Chrome finish adjustable leveling legs
- Available in Red Oak (wood veneer) and Walnut (wood veneer) colors
- Durable water resistant polyurethane finish
- Optional matching mirror

Dimensions: 38 3/8"W x 19 1/4"D x 33 1/2"H

CERAMIC VANITIES



DLVRB-125 White Oak



DLVRB-125 Walnut



DLVRB-125 Red Oak

Features:

- Vanity cabinet made of wood MDF
- One piece white porcelain basin
- One drawer and two bottom cabinets
- Available In Ivory, Red Oak (wood veneer), White Oak (wood veneer) and Walnut (wood veneer) colors

- Durable water resistant polyurethane
- Optional matching mirror

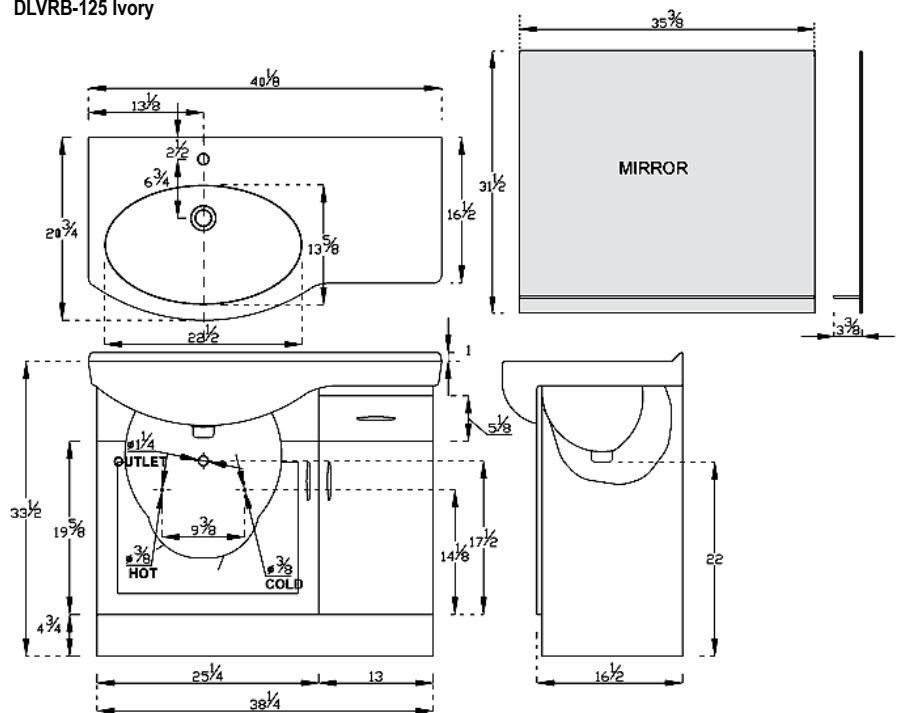
Dimensions: 40 1/8"W x 20 3/4"D x 33 1/2"H

DLVRB-125
CERAMIC VANITY

Wood, ceramic and glass give this vanity a designer look. A top drawer and two bottom storage compartments with doors provide convenient storage space. The larger bottom door is accented by a frosted glass insert. A single piece overhang porcelain sink with space for toiletries or towel adds function and convenience.



DLVRB-125 Ivory

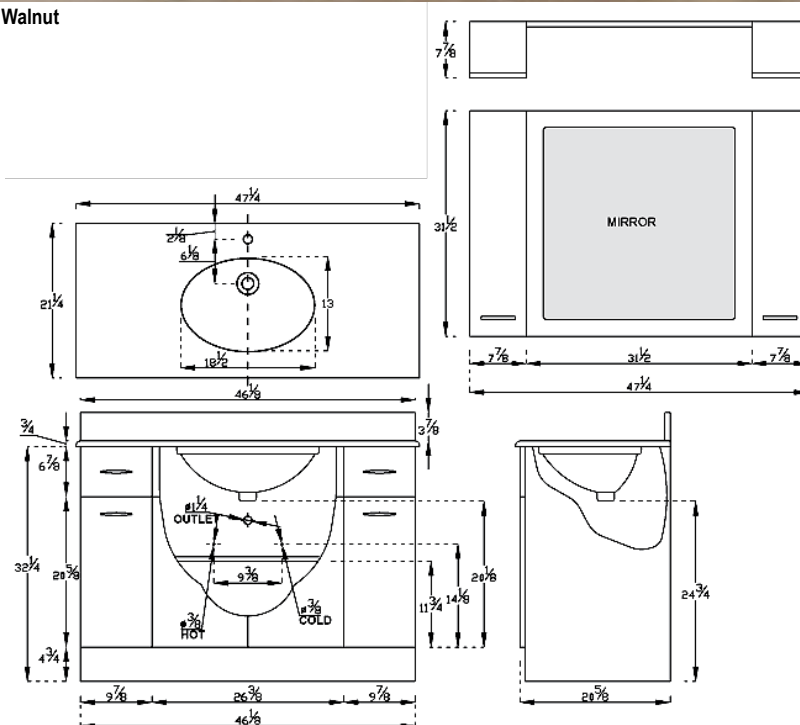


Storage and convenience are the hallmarks of this vanity. Two drawers and four bottom compartments with individual doors provide considerable storage. Add an optional mirror with integrated side cabinets. The fully assembled cabinet comes with a marble countertop drilled for single hole faucet and a backsplash.

DLVRB-142 CERAMIC VANITY



DLVRB-142 Walnut



DLVRB-142 White Oak



DLVRB-142 Ivory



DLVRB-142 Red Oak

Features:

- 3/4" beige marble top and backsplash with drilling for single hole faucet
 - Vanity cabinet made of wood MDF
 - Under-mount white porcelain sink
 - Soft closing drawer guide rail system
 - Water resistant polyurethane finish
 - Optional mirror with two side cabinets
- Dimensions: 47 1/4"W x 21 1/4"D x 33"H

CERAMIC VANITIES

DLVRB-313 CERAMIC VANITY



DLVRB-313 White



DLVRB-313 Ivory

Features:

- 3/4" Off-white marble top and backsplash with drilling for single hole faucet
- Vanity cabinet made of wood MDF
- Under-mount white porcelain sink with overflow
- Drawers with soft closing rail system
- Adjustable self-closing door hinges
- Water resistant polyurethane finish
- Optional mirror with side cabinet, 2 wood shelves recessed halogen lights

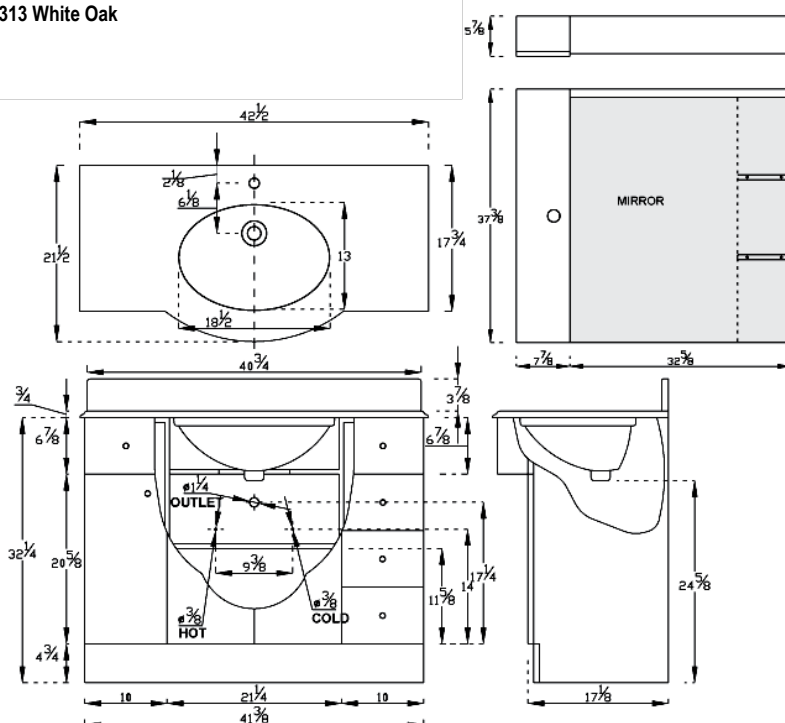
Dimensions:

42 1/2"W x 21 1/2"D x 32 1/4"H

Looking for a beautiful bathroom vanity with many individual storage drawers and cabinet space – this model is the right choice. If more space is needed then found in its five drawers and three door bottom cabinet, just add the optional mirror with integrated side cabinet, two shelves and lights. The fully assembled cabinet comes with a marble countertop and a marble backsplash.



DLVRB-313 White Oak



CERAMIC VANITIES

DLVRB-314-147 CERAMIC VANITY

If you love the look of this vanity, the only choice you have to make is which one of the four sizes works best for your bathroom. From compact single sink model, to a double sink option with incredible storage space - all of these vanities come with fully assembled modular cabinets and marble countertops with backslashes.



DLVRB-314-147 White Oak



DLVRB-314-147 Ivory

Features:

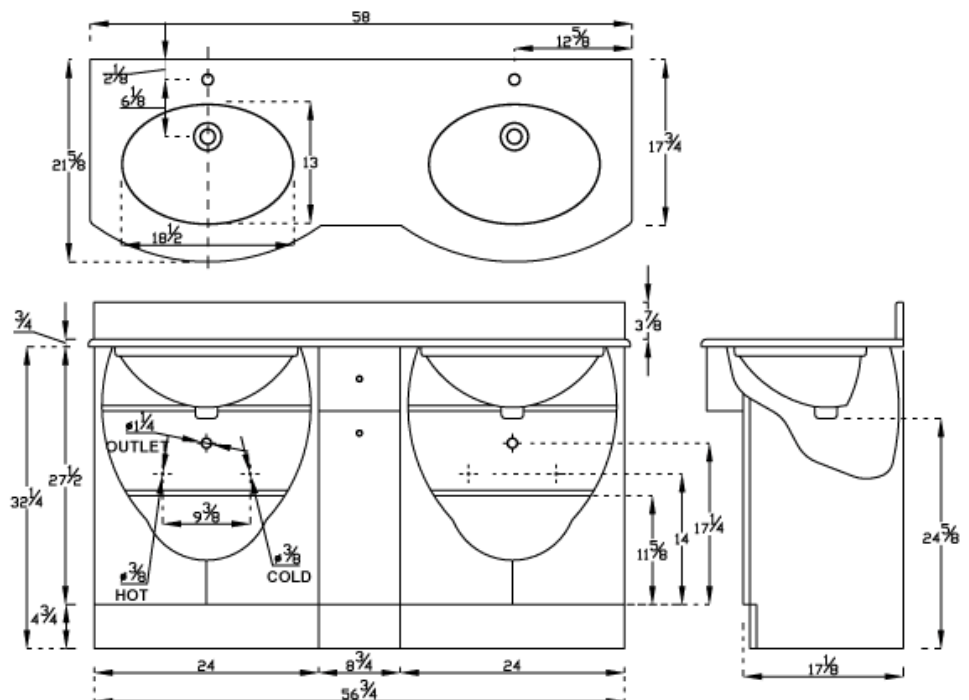
- Four different configurations of main and side cabinets
- 3/4" off-white marble top and back-splash with drilling for single hole faucet
- Vanity cabinets made of wood MDF
- Under-mount white porcelain sink(s)
- Drawers with soft closing guide rails
- Cabinet doors with self-closing hinges
- Water resistant polyurethane finish
- Optional mirror(s) with glass shelves

Dimensions:

- 314/64: 25 1/4"W x 21 5/8"D x 32 1/4"H
 314/86: 33 7/8"W x 21 5/8"D x 32 1/4"H
 314/108: 42 5/8"W x 21 5/8"D x 32 1/4"H
 314/147: 58"W x 21 5/8"D x 32 1/4"H



DLVRB-314-147 White





DLVRB-314-64
CERAMIC VANITY



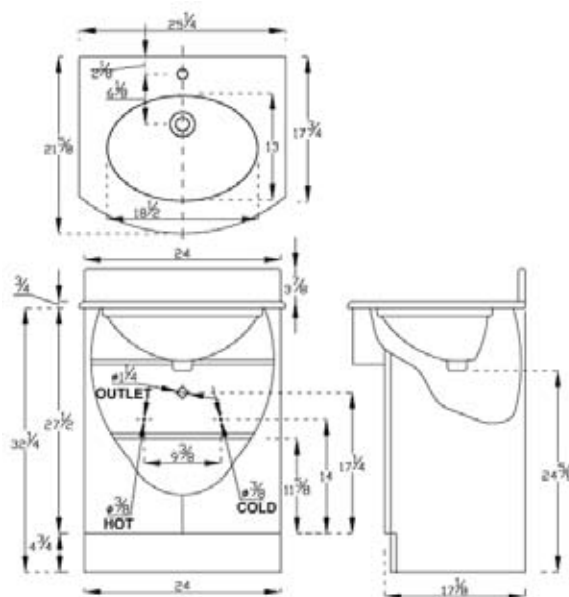
WHITE OAK



IVORY



WHITE



DLVRB-314-86
CERAMIC VANITY



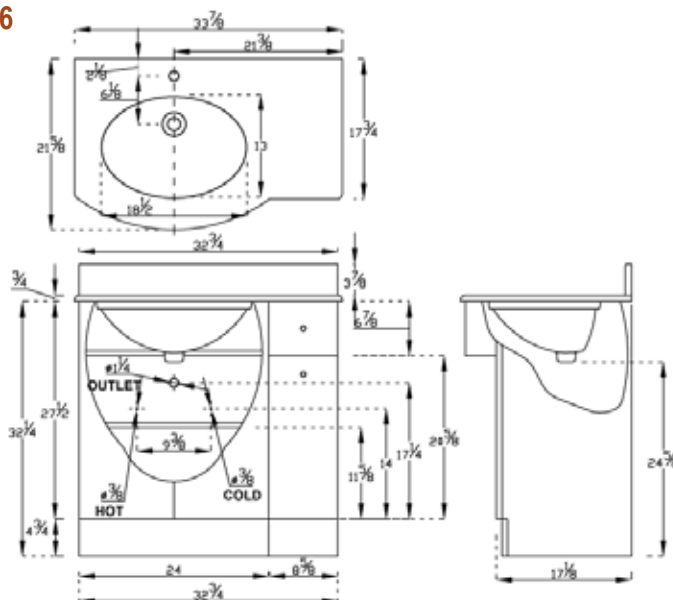
WHITE OAK



IVORY



WHITE



DLVRB-314-108
CERAMIC VANITY



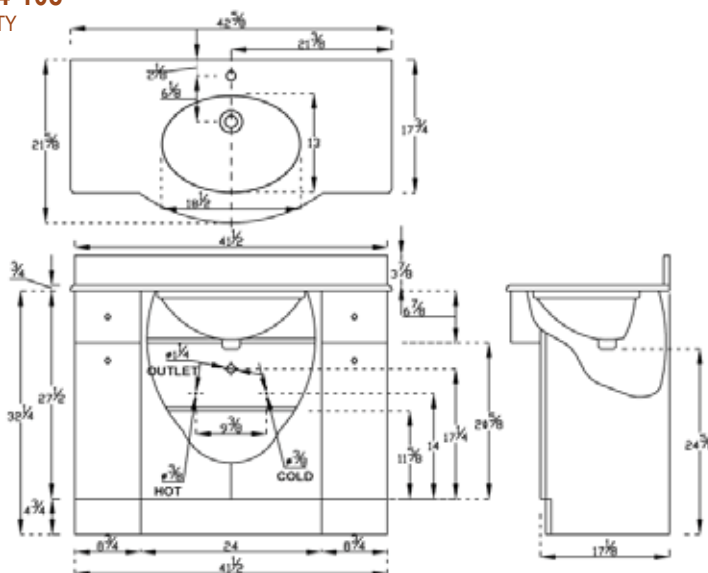
WHITE OAK



IVORY



WHITE



CERAMIC VANITIES

CERAMIC VANITY

This beautiful Euro-design vanity available in four sizes is sure to be the answer for your bathroom project. The amazing curved doors make this a one of a kind cabinet. Complimented by a marble countertop with a back-splash, these fully assembled vanities are made to fit any project.



Features:

- Four different configurations of main and side cabinets
- 3/4" off-white marble top and back-splash with drilling for single hole faucet
- Under-mount white porcelain sink(s) with overflow
- Spacious storage cabinets and drawers
- Full extension drawers with soft closing guide systems
- Adjustable self closing door hinges
- Cabinet available in Ivory color
- Water resistant polyurethane finish
- Optional matching mirror

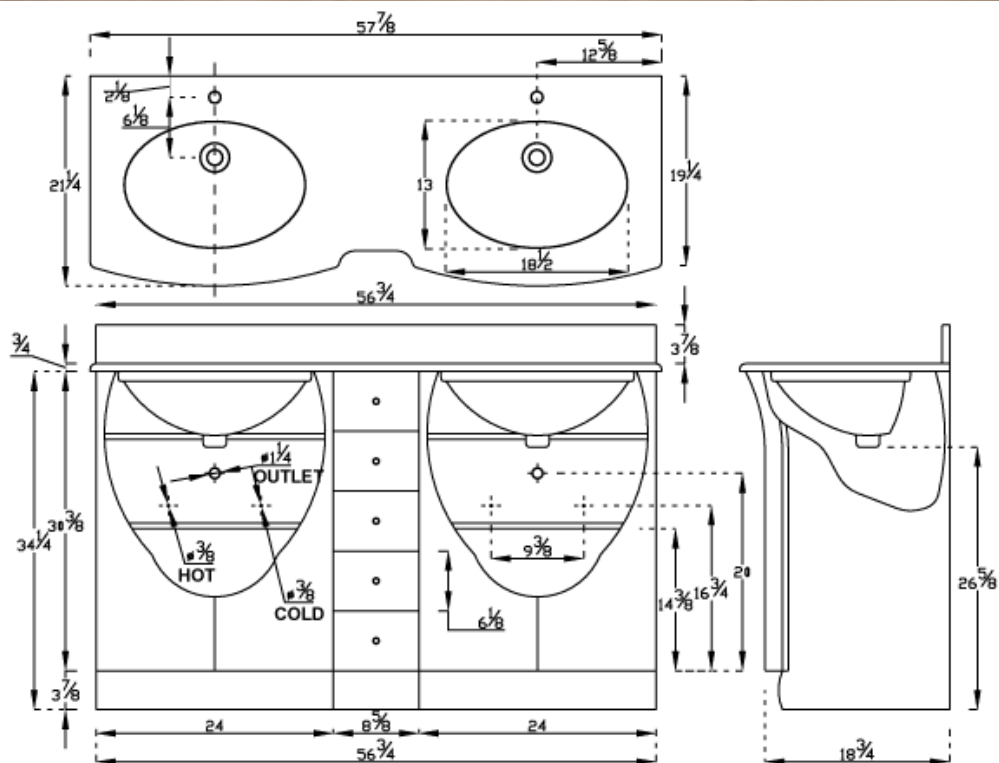
Dimensions:

315/64: 25 1/4"W x 21 1/4"D x 34 1/4"H

315/86: 33 7/8"W x 21 1/4"D x 34 1/4"H

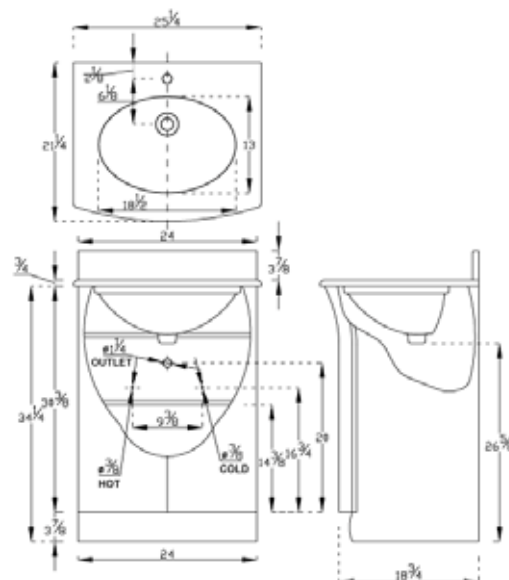
315/108: 42 5/8"W x 21 1/4"D x 34 1/4"H

315/147: 58"W x 21 1/4"D x 34 1/4"H

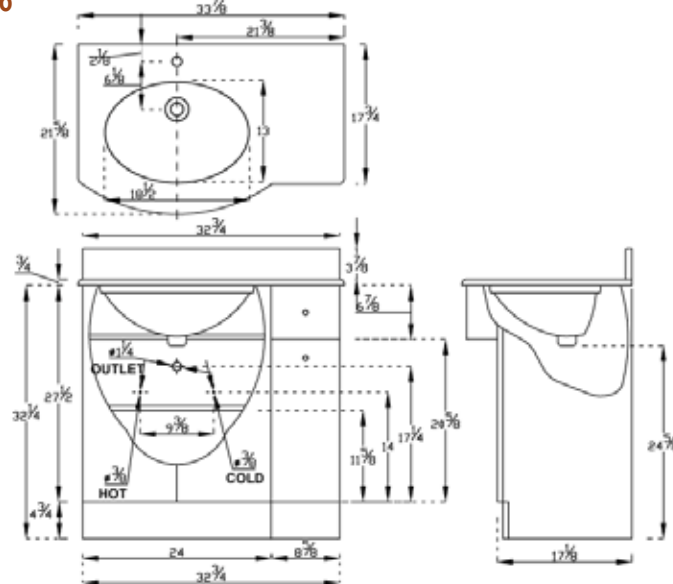




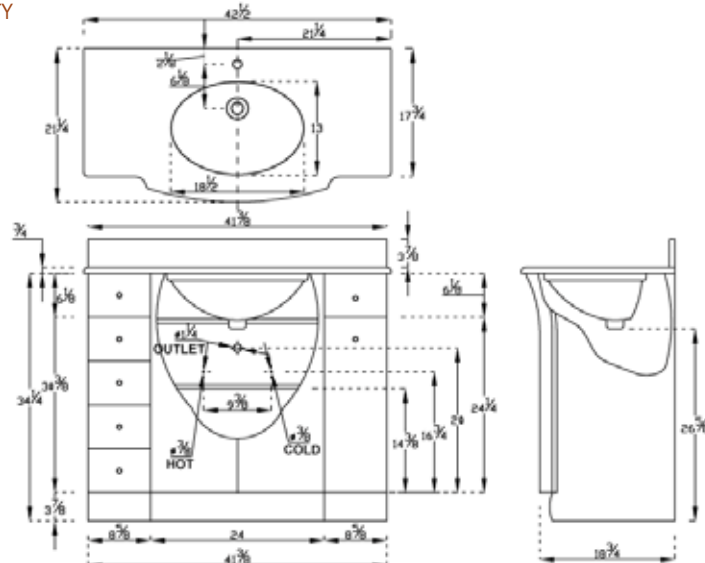
DLVRB-315-64
CERAMIC VANITY



DLVRB-315-86
CERAMIC VANITY



DLVRB-315-108
CERAMIC VANITY



GLASS VANITIES

GLASS VANITIES

Some call them modern, some call them unique – we call them beautiful. Adding a DreamLine™ Glass Bathroom Vanity brings beauty to your bathroom. Sleek lines of tempered glass tops and vessel sinks, enhanced by rich wood or stainless steel complete your bathroom design. From compact glass vanities perfect for small powder rooms, to beautiful sinks for two - a great addition for master bathroom renovation - you are sure to find the options and designs you are looking for in this exciting product line. Add a traditional or waterfall DreamLine™ faucet or side cabinets and towel stands for a picture-perfect bathroom vanity.

TABLE OF CONTENTS

DLVG-1002	43
DLVG-105	44
DLVG-107	44
DLVG-108	45
DLVG-204	45
DLVG-118	46
DLVG-1103	46
DLVG-209	47
DLVG-205	47
DLVG-208	48
DLVG-615	48
DLVG-206	49
DLVG-2061	49
DLVG-2261	50
DLVG-2262	50
DLVG-211	51
DLVG-2112	51
Glass Vessel Sinks	52

This wall mounted contemporary vanity features stylish glass top and vessel sink in choice of four natural glass colors. Lower glass storage shelf provides space for toiletries and the vanity includes an integrated towel bar.



DLVG-1002 Blue Glass

DLVG-1002 GLASS VANITY



DLVG-1002 Amber Glass



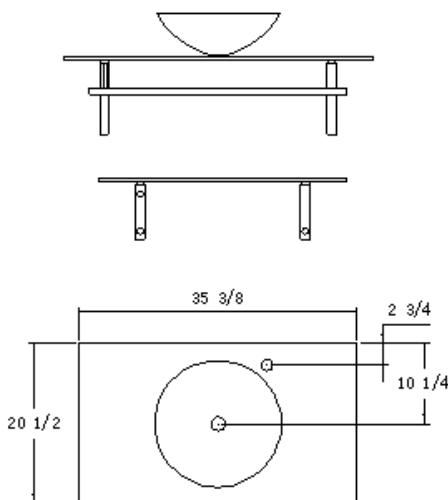
DLVG-1002 Frosted Glass



DLVG-1002 Grey Glass

Features:

- 3/4" tempered natural color glass
- Available in blue, amber, grey & frosted natural glass colors
- Stainless steel wall bracket and towel bar
- Single hole faucet drilling
- Includes chrome finish umbrella drain & trap

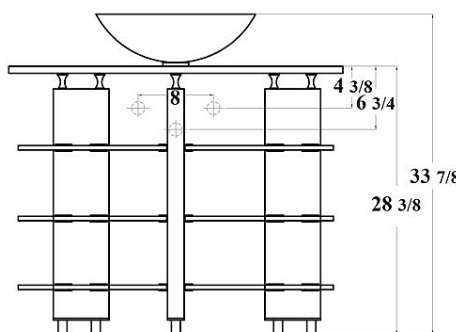




DLVG-105 Black

DLVG-105 GLASS VANITY

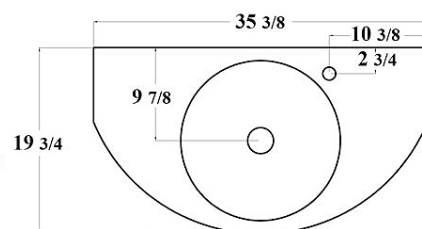
This glass vanity boasts a stunning modern bathroom vanity design to complete any bathroom renovation project. A glass countertop and six glass shelves below create a clear, welcoming impression with their smooth surfaces and rounded edges.



Maple Mahogany Black

Features:

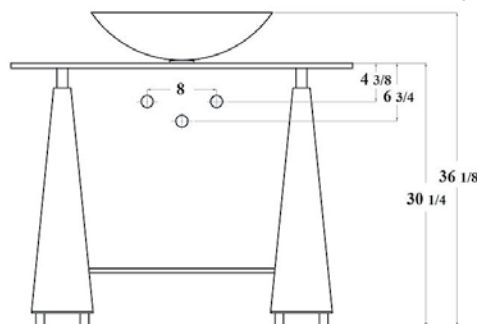
- 3/4" tempered glass countertop
- Single hole faucet drilling
- Solid wood brackets
- Stainless steel hardware
- Under counter glass shelves
- Available in black, mahogany and maple wood finish
- Includes chrome finish umbrella drain & trap
- Optional side cabinet



DLVG-107 Maple

DLVG-107 GLASS VANITY

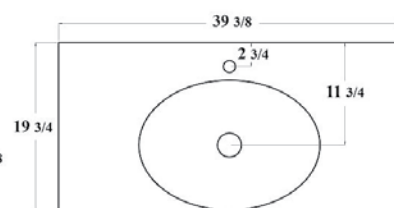
The unique modern design of this vanity combines four triangular leg supports with a tempered glass countertop and an above counter vessel sink. With its modern lines and minimalistic style this vanity is a perfect addition to any bathroom.



Maple Mahogany Black

Features:

- 3/4" tempered glass countertop & vessel sink
- Wall-mount design with four base leg supports
- Solid wood brackets & stainless steel hardware
- Available in black, mahogany and maple wood finish
- Single hole faucet drilling
- Includes chrome finish umbrella drain & trap
- Optional side cabinet





DLVG-108 Maple

DLVG-108

GLASS VANITY

Appealing wall mounted clear glass vanity countertop and seamlessly integrated sink. This vanity comes with under-sink wood drawer and integrated towel bar completing an open space functional design.



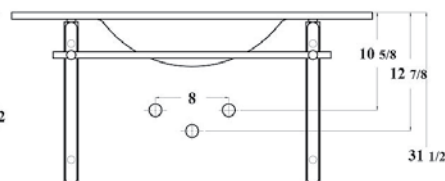
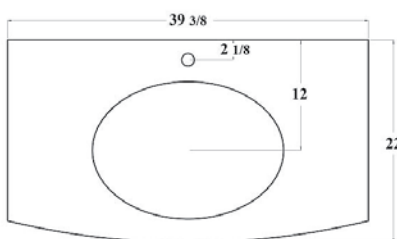
Maple

Mahogany

Black

Features:

- 3/4" tempered glass countertop with seamlessly integrated sink
- Wood drawer in black, mahogany & maple finish
- Stainless steel wall bracket and towel bar
- Single hole faucet drilling
- Includes chrome finish umbrella drain & trap
- Optional side cabinet



DLVG-204 Mahogany

DLVG-204

GLASS VANITY

This beautiful and functional vanity features clean and modern lines and adds visual appeal to any bathroom. Two drawers and two levels of shelving provide a perfect option for storing towels and toiletries.



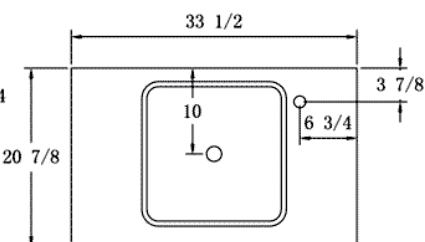
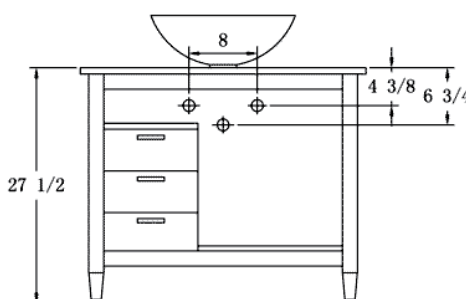
Maple

Mahogany

Black

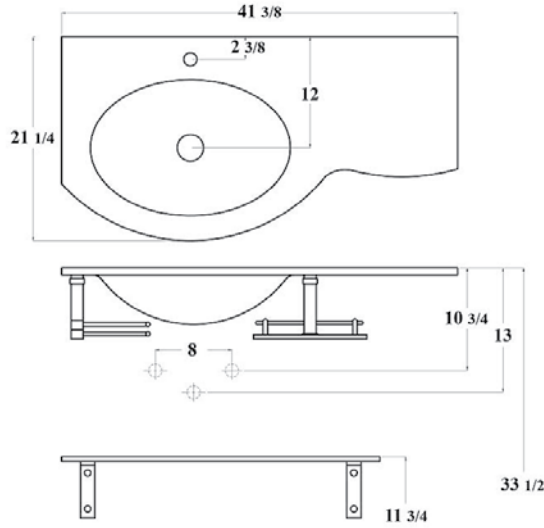
Features:

- 3/4" Tempered glass countertop
- Three drawers & two levels Of shelving
- Solid wood frame with legs
- Available in black, mahogany and maple wood finish
- Single hole faucet drilling
- Includes chrome finish umbrella drain & trap
- Two cabinet doors with shelf inside
- Optional wall cabinet



DLVG-118 GLASS VANITY

Add this European style wall-mounted glass vanity set with soft curving contours and clear inside glass shelves to your powder room or bathroom. An undermount glass basin set into the countertop completes the look.



Features:

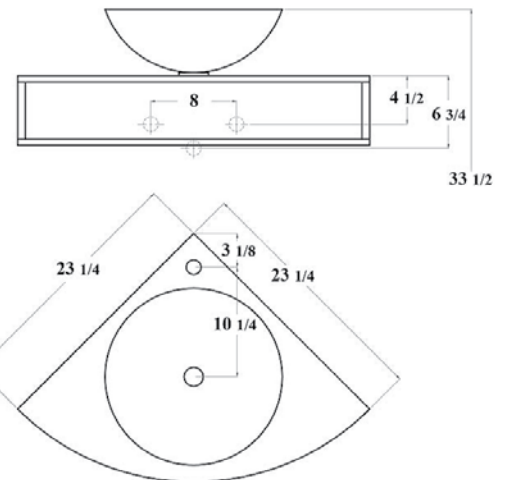
- $\frac{3}{4}$ " tempered glass countertop
- Two lower glass shelf
- Stainless steel wall bracket and towel bar
- Single hole faucet drilling
- Undermount glass basin with overflow
- Includes chrome finish umbrella drain & trap



DLVG-1103 GLASS VANITY



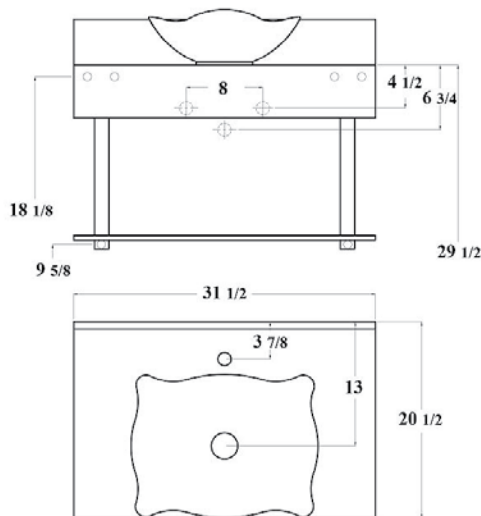
Corner mount bathroom vanity combining space-saving design with modern appeal. An integrated towel bar and convenient glass vessel sink add to the function and beauty of this vanity.



Features:

- $\frac{3}{4}$ " tempered glass countertop
- Space-saving corner-mount design
- Single hole faucet drilling
- Stainless steel wall bracket and towel bar
- Includes chrome finish umbrella drain & trap

DLVG-209 GLASS VANITY



Features:

- Wall-mount 3/4" tempered glass countertop
- Stainless steel wall bracket assembly
- Lower glass shelf
- Single hole faucet drilling
- Includes chrome finish umbrella drain & trap

A modern wall-mounted Bathroom Glass Vanity boasting a space-saving design that does not compromise style. A lower glass shelf provides convenient storage for towels and toiletries.



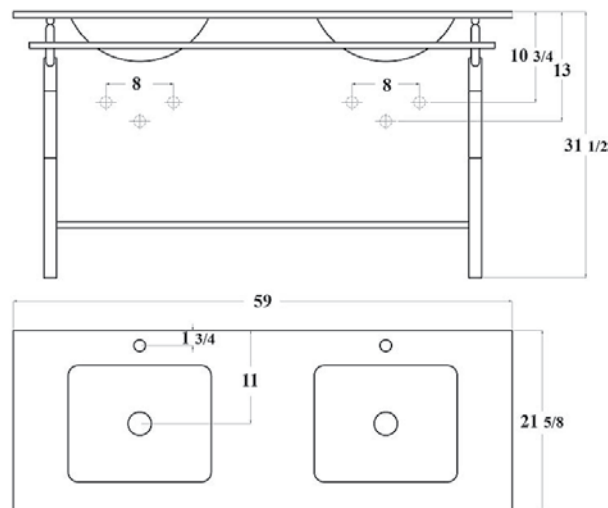
DLVG-205 GLASS VANITY



Features:

- Wall-mount design with 3/4" thick tempered clear glass countertop with two base leg supports
- Stainless steel wall bracket, legs & towel bar
- Drilled for two single hole faucets
- Stainless steel storage shelf
- Basins include overflows
- Includes chrome finish umbrella drains & traps

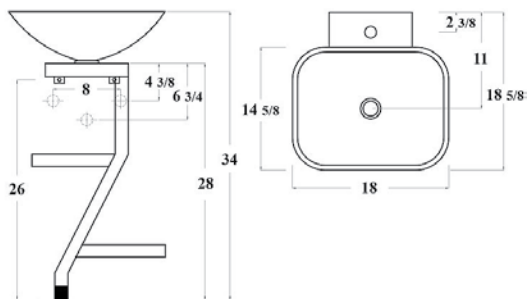
This modern vanity includes impact resistant tempered glass countertop with two under-mount sinks and spacious lower shelf. The unique design provides ample room for two and is a great addition to any contemporary bathroom.



GLASS VANITIES

DLVG-208 GLASS VANITY

This attractive bathroom vanity combines an efficient space saving design with modern style. With its clean and sleek lines it is quint-essentially contemporary. Combine the base with optional vessel sink and faucet for a truly unique design.



Features:

- Wall-mount design with two base leg supports
- Two integrated shelves and stainless steel towel bar
- Choice of oak, mahogany & maple wood finish
- Combine with a choice of a glass basin
- Single hole faucet drilling
- Includes chrome finish umbrella drain & trap



Maple



Mahogany



Oak

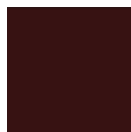


DLVG-208 Oak

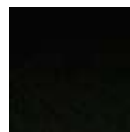
DLVG-615 GLASS VANITY



DLVG-615 Mahogany



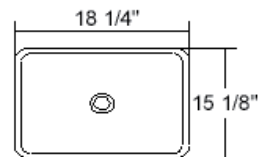
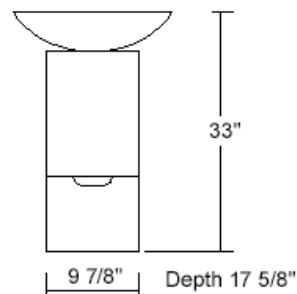
Mahogany



Black

Features:

- Lower storage compartment with hinged door
- Pull-out bottom cabinet drawer
- Available in black & mahogany wood finish
- Selection of a glass basins
- Single hole faucet drilling
- Includes chrome finish umbrella drain & trap



This vanity features a compact design well suited to smaller bathrooms. It has a compartment storage cabinet and one pull-out bottom drawer. Combine the base cabinet with one of the optional glass vessel sinks and faucets for a truly unique design.

DLVG-206 / 2061

GLASS VANITY

Transparent tempered glass countertop, one or two vessel sinks and a floor cabinet complete the design of these vanities. The glass sinks complement the clean lines of the countertop while the three drawer cabinet provides convenient storage for toiletries.



DLVG-206 Maple

DLVG-206 - Features:

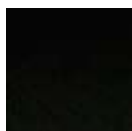
- Wall-mount 3/4" tempered glass countertop
- Stainless steel wall brackets and towel bar
- Combine with choice of two glass basins
- Wood cabinet in mahogany, maple or black finish
- Drilled for two single hole faucets
- Includes chrome finish umbrella drains & traps



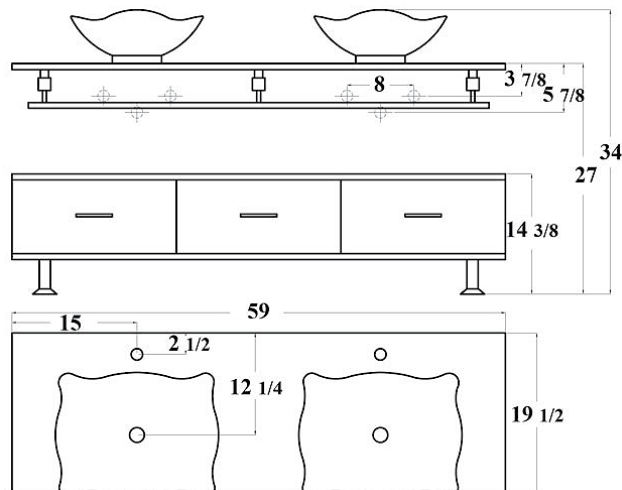
Maple



Mahogany



Black



DLVG-2061 Black

DLVG-2061 - Features:

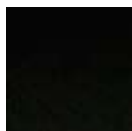
- Wall-mount 3/4" tempered glass countertop
- Stainless steel wall brackets and towel bar
- Combine with choice of single glass basin
- Reversible for "right" and "left" configuration
- Wood cabinet in mahogany, maple or black finish
- Single hole faucet drilling
- Includes chrome finish umbrella drain & trap



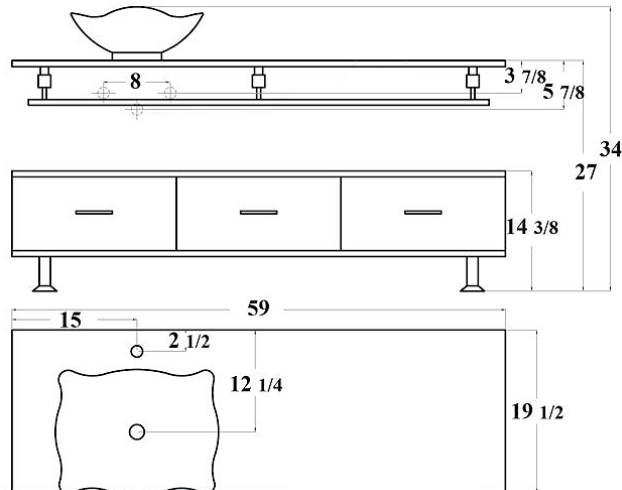
Maple



Mahogany



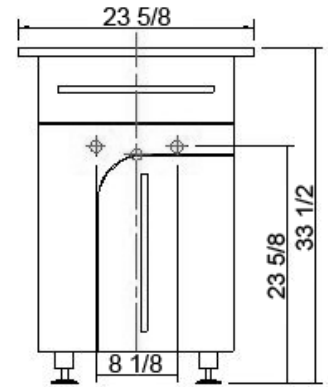
Black



DLVG-2261 GLASS VANITY

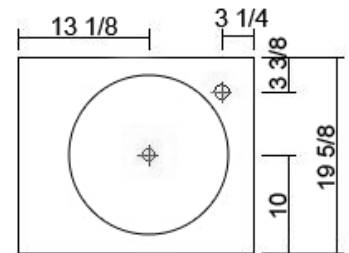


This compact eye-catching bathroom vanity cabinet combines modern look with great functionality and adds a perfect final touch to your bathroom. You'll immediately appreciate the unique visual appeal of the door finished in maple color, contrasted by the black finish of the rest of the bathroom storage cabinet. Black glass countertop is also accented by a light maple color glass undermount sink.



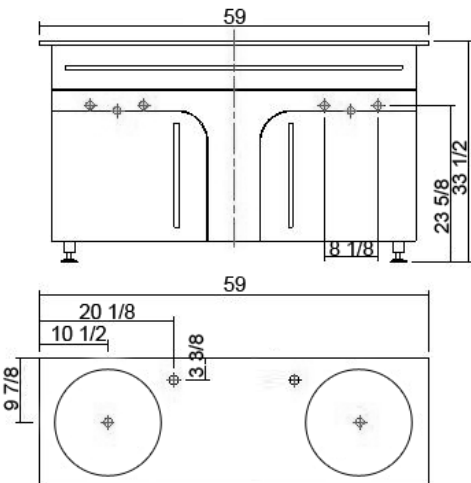
Features:

- Light maple color glass basin with overflow
- Lower storage cabinet for bathroom accessories
- Stainless steel towel bar
- Adjustable chrome leveling legs
- Drilled for single hole faucet
- Includes chrome finish umbrella drain & trap



DLVG-2262 GLASS VANITY

This eye-catching double sink bathroom vanity cabinet combines modern look with great functionality and adds a perfect final touch to your bathroom. It has a unique visual appeal of the maple color finished door, contrasted by the black finish of the rest of the large bathroom storage cabinet. The black glass countertop is accented by two light maple color glass undermount sinks.



Features:

- Light maple color glass basins with overflows
- Lower storage cabinet for bathroom accessories
- Stainless steel towel bar
- Adjustable chrome leveling legs
- Drilled for two single hole faucets
- Includes chrome finish umbrella drains & traps



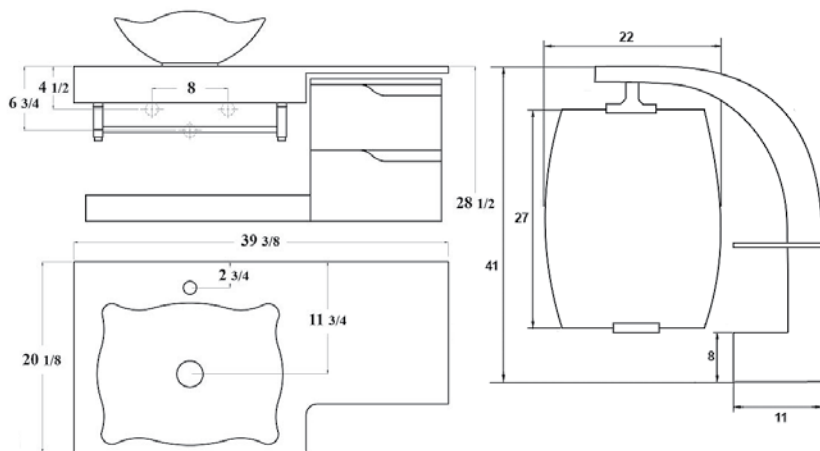
DLVG-211

GLASS VANITY

Features:

- 3/4" tempered clear glass countertop
- Efficient wall-mount design
- Stainless steel wall brackets and towel bar
- Lower shelf and two storage drawers
- Single hole faucet drilling
- Includes chrome finish umbrella drain & trap

This bathroom glass vanity combines the stunning appearance of a clear tempered glass vanity top, wood frame and storage drawers. A contoured glass vessel sink and stainless steel towel bar add to the design of the vanity.



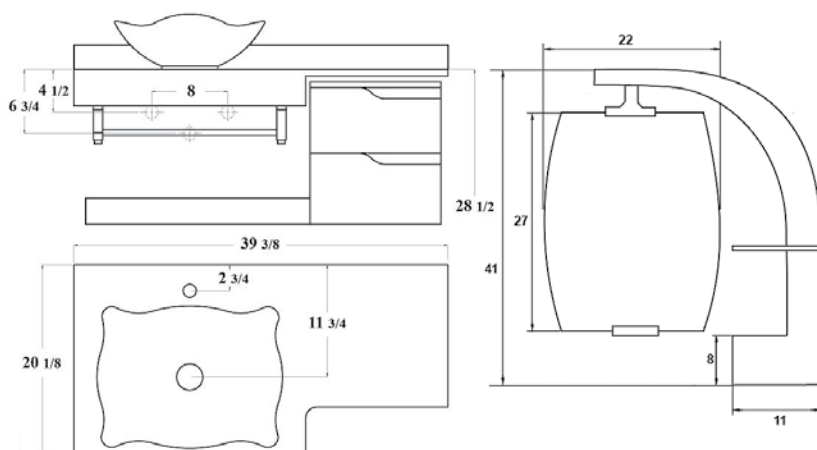
DLVG-2112

GLASS VANITY

Features:

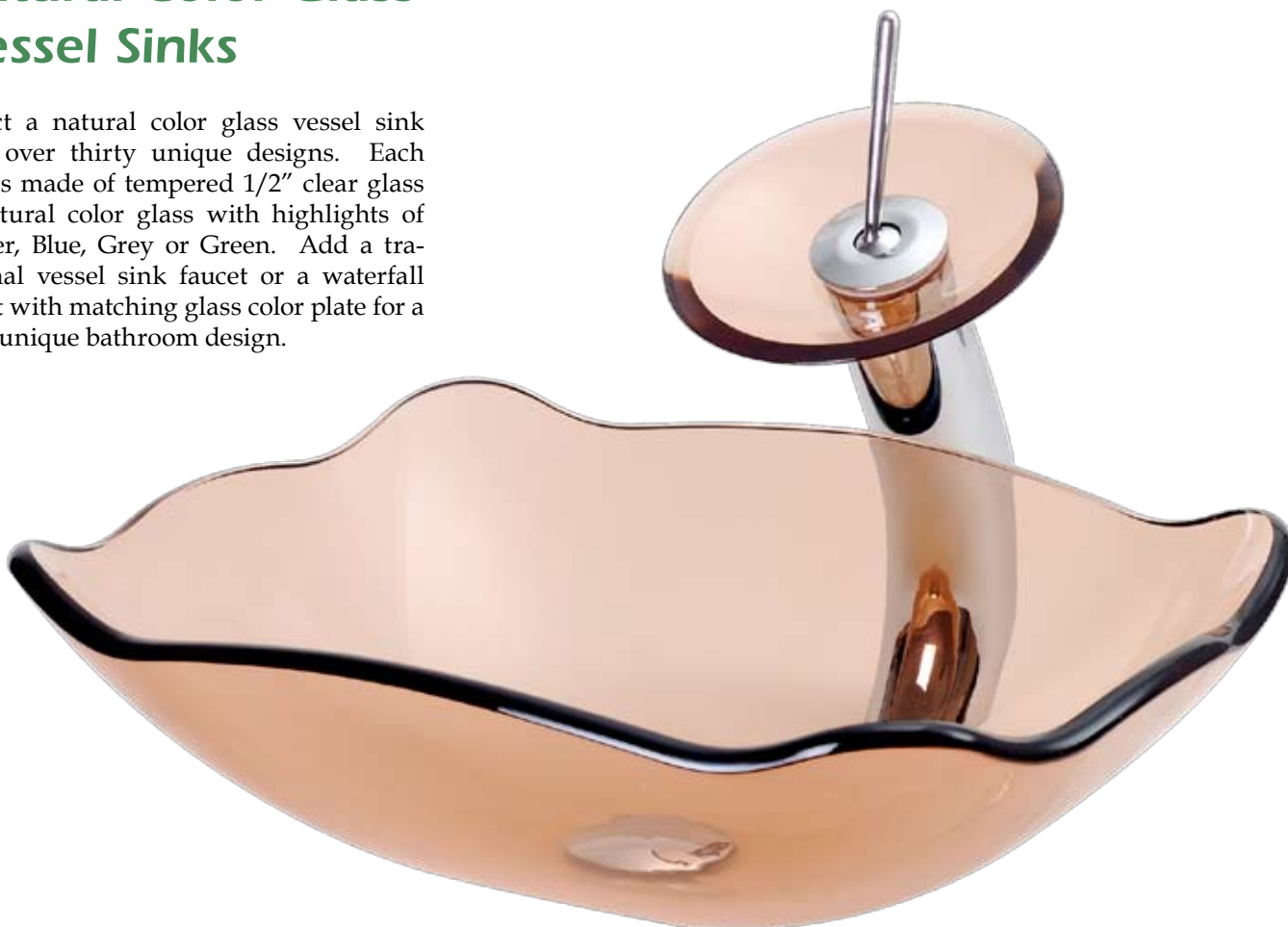
- 3/4" tempered maroon color glass countertop
- Efficient wall-mount design
- Stainless steel wall brackets and towel bar
- Lower shelf and two storage drawers
- Single hole faucet drilling
- Includes chrome finish umbrella drain & trap

This bathroom glass vanity combines a tempered glass vanity top in maroon color with wood frame and storage drawers. Adding beauty to the already functional design are the vanity's matching maroon color glass vessel sink and wood finish.

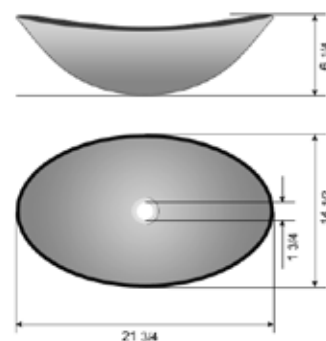


Natural Color Glass Vessel Sinks

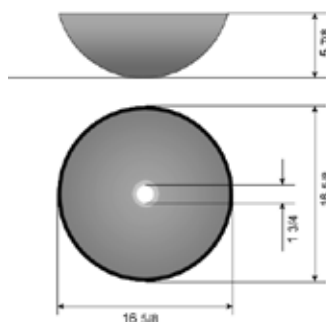
Select a natural color glass vessel sink from over thirty unique designs. Each sink is made of tempered 1/2" clear glass or natural color glass with highlights of Amber, Blue, Grey or Green. Add a traditional vessel sink faucet or a waterfall faucet with matching glass color plate for a truly unique bathroom design.



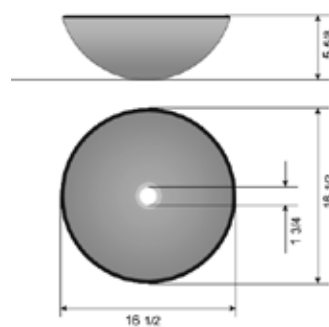
DLBG-01



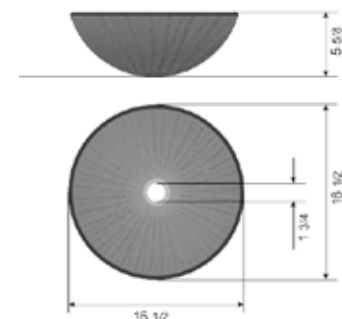
DLBG-07



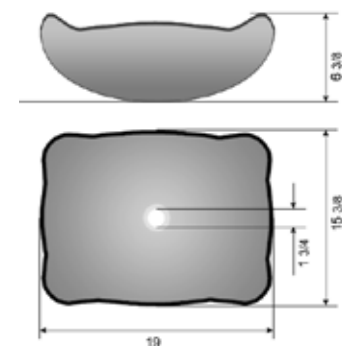
DLBG-08



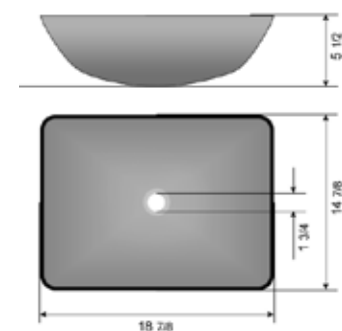
DLBG-12



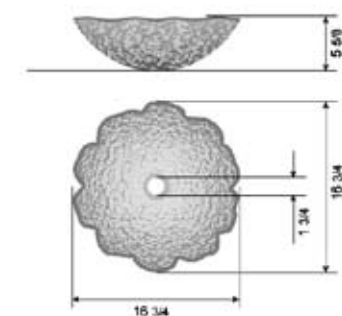
DLBG-15



DLBG-17



DLBG-18



STONE VANITIES



The question asked the most about our Stone Vanities and Stone Vessel Sinks is – “Are these art or vanities?” Well, we would like to think that they are a little of both. Made from your choice of a number of natural stone types like Honey Onyx or Emperador Dark, these beautiful hand-made sinks are at the center of any designer bathroom project. With options like stone framed mirrors and matching stone waterfall faucets you can further enhance the stone bathroom vanity ensemble. Handcrafted of the finest natural materials, each of these beautiful vanities is truly a one of a kind work of art.

TABLE OF CONTENTS

DLVNF-V1	55
DLVNF-V2	56
DLVNF-V8	57
DLVNF-V20	58
DLVNF-V21	59
DLVNF-V30	60
DLVNF-V31	61
Stone Vessel Sinks	62

DLVNF-V1 STONE VANITY

This natural stone vanity includes semi-circular countertop, round pedestal base, vessel sink and matching oval mirror. The polished stone surface adds a great look. The back of the pedestal is hollow hiding most of the drain and trap plumbing. Add a traditional vessel sink faucet or a water-fall faucet with matching stone plate for a truly unique look.



HONEY ONYX

NERO MARQUINA

OVERLORD FLOWER

AGATE RED



EMPERADOR LIGHT

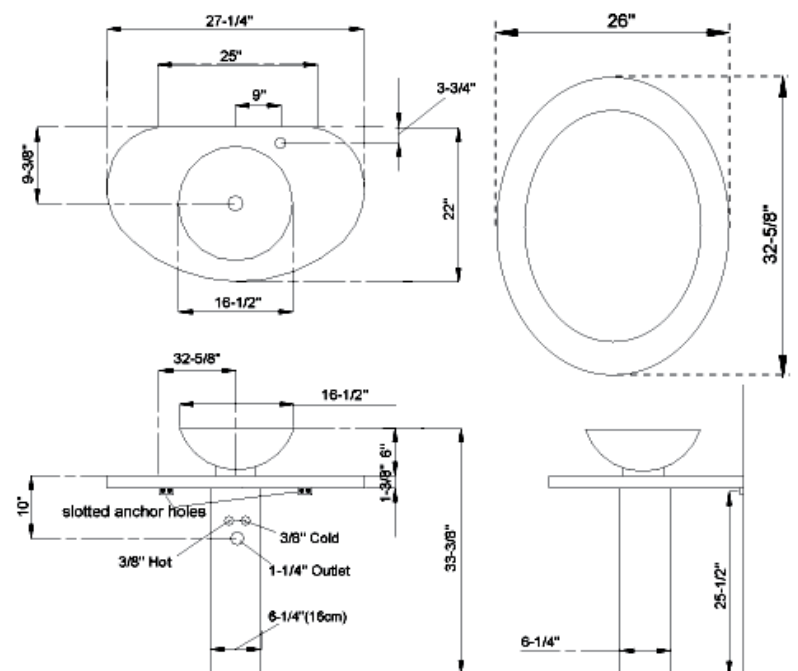
EMPERADOR DARK

CHINA BIANCO

SILVIA FADL

Features:

- Hand-made semi-circle design vanity countertop
- Above counter vessel sink, pedestal base and oval mirror
- Available in nine different stone types
- Single hole faucet drilling
- Includes push button umbrella drain and trap in chrome finish



INDIAN GREEN

STONE VANITIES

DLVNF-V2 STONE VANITY

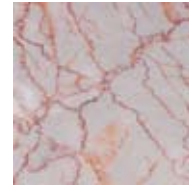
ADDITIONAL 8 STONE TYPES



OVERLORD FLOWER



SILVIA FADL



AGATE RED



NERO MARQUINA



CHINA BIANCO



INDIAN GREEN



EMPERADOR LIGHT



EMPERADOR DARK

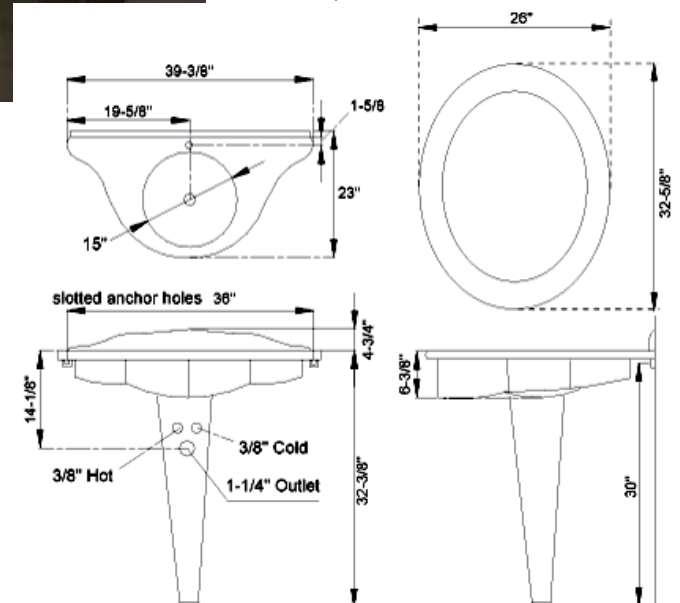
Features:

- Hand-made single piece countertop
- Round pedestal base and oval mirror
- Available in nine different stone types
- Includes a matching stone backsplash
- Countertop skirt features carvings
- Sink with overflow
- Single hole faucet drilling
- Includes push button umbrella drain and trap in chrome finish



HONEY ONYX

Artistic hand-carved stone pedestal vanity with an elegant and unique look. Design includes a combination of polished stone surface with carved details on the front of vanity. The single piece countertop rests on a round pedestal hiding most of the drain and trap plumbing. Add a traditional vessel sink faucet or a waterfall faucet with matching stone plate for a truly unique look.



DLVNF-V8 STONE VANITY

ADDITIONAL 8 STONE TYPES



OVERLORD FLOWER



SILVIA FADL



AGATE RED



NERO MARQUINA



CHINA BIANCO



INDIAN GREEN



EMPERADOR LIGHT



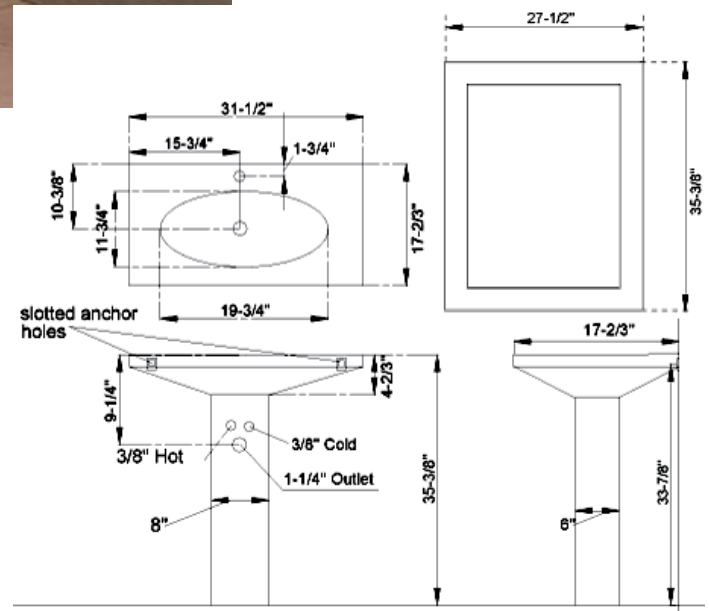
EMPERADOR DARK

Features:

- Hand-made single piece countertop
- Square pedestal base and square matching mirror
- Available in nine different stone types
- Pedestal features carved grooves
- Single hole faucet drilling
- Includes push button umbrella drain and trap in chrome finish

HONEY ONYX

This hand-carved stone vanity is beautifully designed with matching square pedestal and large square stone framed mirror. The single piece countertop rests on a pedestal hiding most of the drain and trap plumbing. Add a traditional vessel sink faucet or a waterfall faucet with matching stone plate for a truly unique look.



STONE VANITIES

DLVNF-V20 STONE VANITY

ADDITIONAL 8 STONE TYPES



OVERLORD FLOWER



SILVIA FADL



AGATE RED



NERO MARQUINA



CHINA BIANCO



INDIAN GREEN



EMPERADOR LIGHT



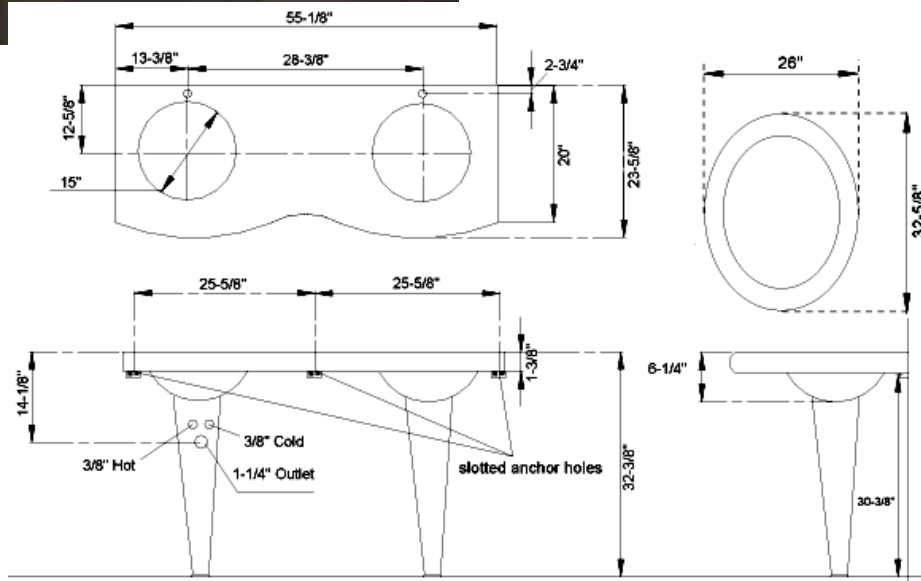
EMPERADOR DARK

Features:

- Hand-made single piece countertop
- Two undermount vessel sinks, round pedestal bases
- Matching oval mirrors
- Available in nine different stone types
- Sinks with overflows
- Single hole faucet drilling
- Includes push button umbrella drains and traps in chrome finish

HONEY ONYX

Artistic hand-carved stone double sink vanity adds beauty and function to your bathroom. Two under mount vessel sinks with overflows are attached to the polished countertop. The stone countertop with sinks rests on two round pedestals hiding most of the drain and trap plumbing. Add traditional vessel sink faucets or waterfall faucets with matching stone plates for a truly unique look.



DLVNF-V21
STONE VANITY

ADDITIONAL 8 STONE TYPES



HONEY ONYX

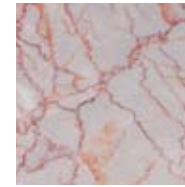
This hand-carved double sink stone vanity is beautifully designed with matching square hand-carved pedestals and large square stone framed mirrors. The countertop rests on square pedestals hiding most of the drain and trap plumbing. Add vanity faucets or waterfall faucets with matching stone plates for a truly unique look.



OVERLORD FLOWER



SILVIA FADL



AGATE RED



NERO MARQUINA

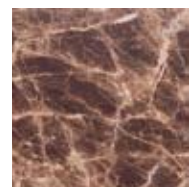
CHINA BIANCO



INDIAN GREEN



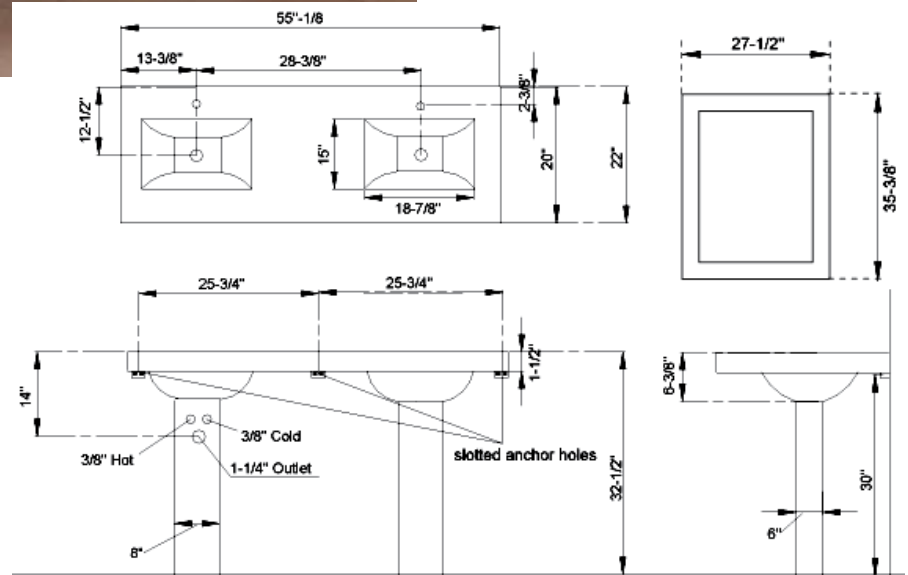
EMPERADOR LIGHT



EMPERADOR DARK

Features:

- Hand-made single piece countertop with two integrated sinks
- Two square pedestal bases and square matching mirrors
- Available in nine different stone types
- Pedestals feature carved grooves
- Single hole faucet drilling
- Includes push button umbrella drains and traps in chrome finish



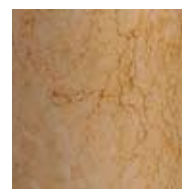
STONE VANITIES

DLVNF-V30 STONE VANITY

ADDITIONAL 8 STONE TYPES



HONEY ONYX



SILVIA FADL



AGATE RED



NERO MARQUINA



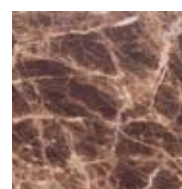
CHINA BIANCO



INDIAN GREEN



EMPERADOR LIGHT



EMPERADOR DARK

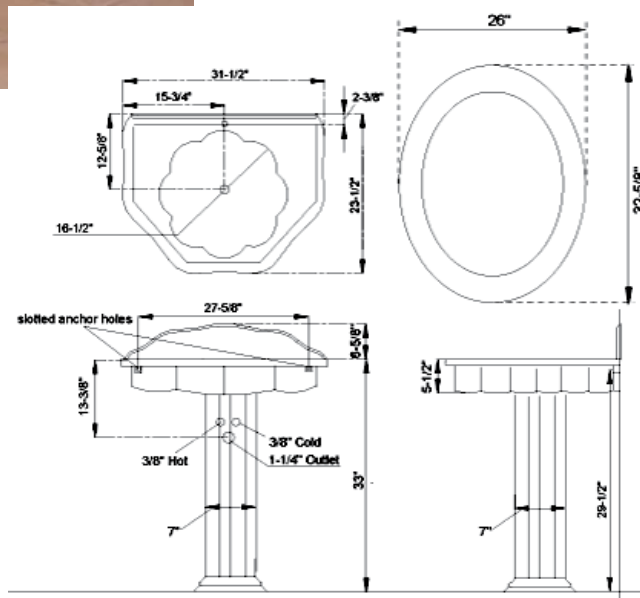
Features:

- Hand-made single piece countertop
- A hexagonal pedestal base and oval mirror
- Available in nine different stone types
- Includes a matching stone backsplash and front skirt
- Single hole faucet drilling
- Includes push button umbrella drain and trap in chrome finish



OVERLORD FLOWER

Artistic hand-carved stone pedestal vanity with an elegant and unique look. Design includes flowing stone backsplash and front skirt. The single piece countertop rests on hexagonal pedestal hiding most of the drain and trap plumbing. Add a traditional vanity sink faucet or a waterfall faucet with matching stone plate for a truly unique look.



DLVNF-V31

STONE VANITY

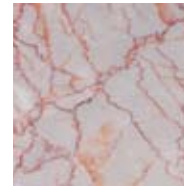
ADDITIONAL 8 STONE TYPES



OVERLORD FLOWER



SILVIA FADL



AGATE RED



NERO MARQUINA



CHINA BIANCO



INDIAN GREEN



EMPERADOR LIGHT



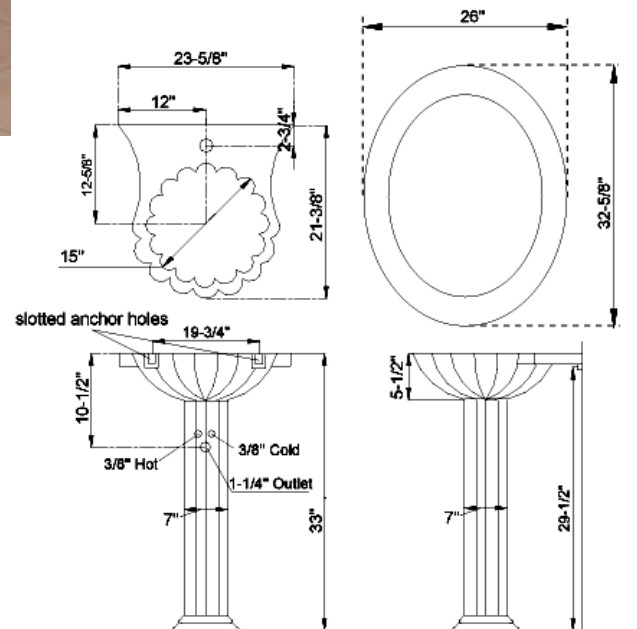
HONEY ONYX

Features:

- Hand-made single piece countertop and vessel sink
- Hexagonal pedestal base and oval mirror
- Available in nine different stone types
- Single hole faucet drilling
- Includes push button umbrella drain and trap in chrome finish

EMPERADOR DARK

This compact stone pedestal vanity is a perfect addition to any small bathroom. Design includes a single piece sea-shell vessel sink with integrated countertop. The vessel sink and countertop combination rests on hexagonal pedestal hiding most of the drain and trap plumbing. Add a traditional vanity sink faucet or a waterfall faucet with matching stone plate for a truly unique look.



STONE VESSEL SINKS

DLVNF-001 STONE VESSEL SINKS

A combination of beautiful natural stone and impeccable craftsmanship go into the creation of each DreamLine™ stone vessel sink. Choose from over fifty hand-made models in a selection of stone types and a variety of shapes for a contemporary above-counter sink design. Add a traditional vessel sink faucet or a waterfall faucet with matching stone plate for a truly unique look.



DLVNF-001 HONEY ONYX
with optional Waterfall Vanity Faucet DLFHD-711CH

AGATE RED



CHINA BIANCO



BLACK GALAXY



EMPERADOR DARK



EMPERADOR LIGHT



GREEN ONYX



HONEY ONYX



INDIAN GREEN



INDIAN RED



NERO MARQUINA



OVERLORD FLOWER



PERLATO SVEVO



SERPEGGIANTE



SHANXI BLACK



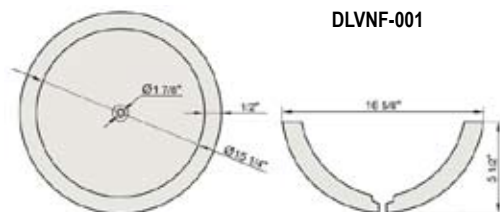
SILVIA FADL



WHITE ONYX



WHITE TRAVERTINO



DLVNF-001B

STONE VESSEL SINKS

AGATE RED



CHINA BIANCO



BLACK GALAXY



EMPERADOR DARK



EMPERADOR LIGHT



HONEY ONYX



NERO MARQUINA



SERPEGGIANTE



DLVNF-001EE

STONE VESSEL SINKS

AGATE RED



CHINA BIANCO



BLACK GALAXY



EMPERADOR DARK



EMPERADOR LIGHT



HONEY ONYX



NERO MARQUINA



SERPEGGIANTE



DLVNF-006

STONE VESSEL SINKS

AGATE RED



CHINA BIANCO



BLACK GALAXY



EMPERADOR DARK



EMPERADOR LIGHT



HONEY ONYX



NERO MARQUINA



SERPEGGIANTE



STONE VESSEL SINKS

DLVNF-009B

STONE VESSEL SINKS

AGATE RED



CHINA BIANCO



BLACK GALAXY



EMPERADOR DARK



EMPERADOR LIGHT



HONEY ONYX



NERO MARQUINA



SERPEGGIANTE



DLVNF-0019AA

STONE VESSEL SINKS

AGATE RED



BLACK GALAXY



EMPERADOR DARK



NERO MARQUINA



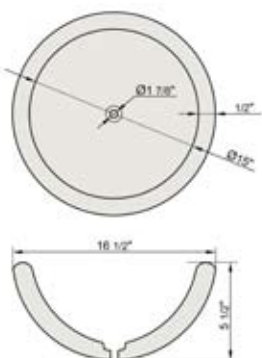
SERPEGGIANTE



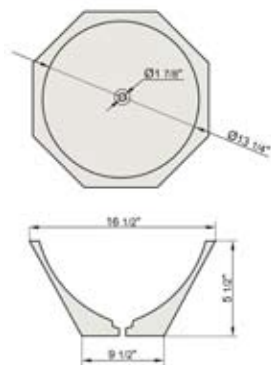
SHANXI BLACK



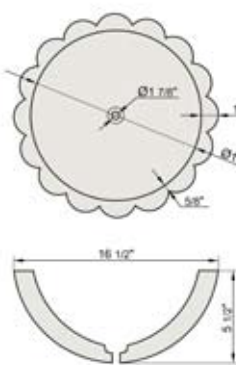
DLVNF-001B



DLVNF-001EE



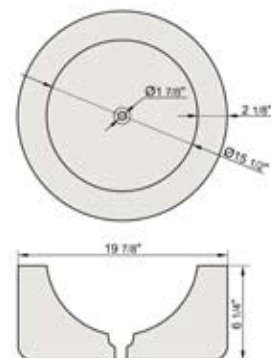
DLVNF-006



DLVNF-009B



DLVNF-0019AA



DLFHD-611CH/711CH WATERFALL VANITY FAUCETS



DLFHD-611CH
Chrome Finish

DLFHD-711CH
Chrome Finish

GLASS PLATE OPTIONS



CLEAR

AMBER

GREY

STONE PLATE OPTIONS



HONEY ONYX

EMPERADOR LIGHT

CHINA BIANCO

AGATE RED

OVERLORD FLOWER

EMPERADOR DARK

INDIAN GREEN

NERO MARQUINA

SILVIA FADL

DLFHD-611PB/711PB WATERFALL VANITY FAUCETS



DLFHD-611PB
Polished Brass Finish

DLFHD-711PB
Polished Brass Finish

GLASS PLATE OPTIONS



CLEAR

AMBER

GREY

STONE PLATE OPTIONS



HONEY ONYX

EMPERADOR LIGHT

CHINA BIANCO

AGATE RED

OVERLORD FLOWER

EMPERADOR DARK

INDIAN GREEN

NERO MARQUINA

SILVIA FADL

SINGLE-HOLE VANITY FAUCETS



DLFHD-1283CH
Chrome Finish



DLFHD-4011CH
Chrome Finish



DLFHD-81362CH
Chrome Finish



DLFHD-81361CH
Chrome Finish



DLFHD-30142CH
Chrome Finish



DLFHD-30141CH
Chrome Finish



DLFHD-30042AB
Antique Brass



DLFHD-30041AB
Antique Brass



DLFHD-6006CH
Chrome Finish



DLFHD-509CH
Chrome Finish



DLFHD-3101CH
Chrome Finish



DLFHD-3001CH
Chrome Finish



DLFHD-3001PB
Polished Brass Finish



DLFHD-909CH
Chrome Finish



DLFHD-909PB
Polished Brass Finish

VANITY PLUMBING

Pop-Up Drain with Large Cap



DLVHD-ACC-D1-CH
Chrome



DLVHD-ACC-D1-PB
Polished Brass



DLVHD-ACC-D1-AB
Antique Brass

Pop-Up Drain with Small Cap



DLVHD-ACC-D3-CH
Chrome

ALSO AVAILABLE:



DLVHD-ACC-D3-PB
Polished Brass



DLVHD-ACC-D3-AB
Antique Brass

Pop-Up Drain with Small Cap & Overflow



DLVHD-ACC-D2-CH
Chrome



DLVHD-ACC-D2-PB
Polished Brass



DLVHD-ACC-D2-AB
Antique Brass

Trap



DLVHD-ACC-T1-CH
Chrome

ALSO AVAILABLE:



DLVHD-ACC-T1-PB
Polished Brass



DLVHD-ACC-T1-AB
Antique Brass

TREE-HOLE VANITY FAUCETS



DLFHD-223-97CH
Chrome Finish



DLFHD-223-97PB
Polished Brass Finish



DLFHD-225-98CH
Chrome Finish



DLFHD-225-98PB
Polished Brass Finish



DLFHD-224-99CH
Chrome Finish



DLFHD-224-99PB
Polished Brass Finish



DLFBJ-6912AB
Antique Brass Finish

BATH TUB FAUCETS



DLFHD-123-97CH
Chrome Finish



DLFHD-123-97PB
Polished Brass Finish



DLFHD-124-99CH
Chrome Finish



DLFHD-124-99PB
Polished Brass Finish



DLFHD-125-98CH
Chrome Finish



DLFHD-125-98PB
Polished Brass Finish

Bathroom of Your Dreams™

DreamLine™

Showers ♦ Steam ♦ Vanities

Bath Authority™

www.BathAuthority.com
1-866-731-8378