

*DreamLine™*

**Waterfall Faucet DLFHD-711 Installation Guide**



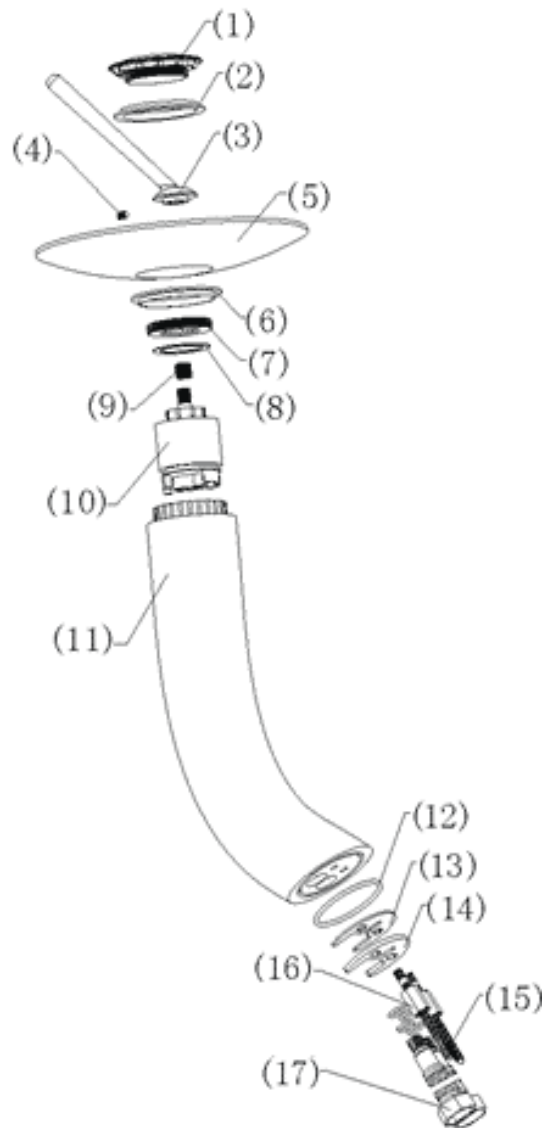
**Glass plate**



**Stone plate**

## I. Parts List:

1. Water diffuser	1 pc
2. Plastic O-gasket	1 pc
3. Handle	1 pc
4. Hex screw	1 pc
5. Plate (glass/stone)	1 pc
6. Rubber O-gasket	1 pc
7. Cartridge plate	1 pc
8. Rubber O-ring	1 pc
9. Cartridge nipple	1 pc
10. Ceramic cartridge	1 pc
11. Faucet body	1 pc
12. Rubber O-ring	1 pc
13. Rubber moon-shape gasket	1 pc
14. Moon-shape fastening bracket	1 pc
15. Two side bolt M6	2 pcs
16. Nut M6	2 pcs
17. Water supply hoses	2 pcs



## **Faucet installation**

1. Screw in two side bolts M6 (15) into the faucet body (11) with short thread up.
2. Tighten water supply hoses (17) into the water supply holes on the bottom of faucet body. You can use Teflon tape for a tight seal.
3. When setting the faucet on a counter, make sure the rubber O-ring (12) is in the groove on the bottom of faucet body
4. Insert hoses through the hole in a counter top and place the faucet in the right position.
5. Place the moon-shaped rubber gasket (13) and moon-shaped bracket (14) under the countertop making sure they are in the correct position according to the faucet and the hoses and secure the faucet to the countertop with Nuts M6 (16).
6. Attach water supply tubes to water lines. Remember that cold water should be on the LEFT and hot water on the RIGHT. Before connecting the lines make sure that valves and hoses are clean.

## Glass or stone plate replacement instructions



1. Turn CCW the chrome water diffuser (1) that holds the glass/stone plate. You may use a special tool that comes in the faucet box or if this tool was misplaced use L-shaped Allen key or a flat screw-driver to remove the water diffuser.



2. Remove the chrome water diffuser and the Plastic O-gasket (2)



3. When replacing the glass/stone plate make sure the rubber O-gasket (6) is in place and lays flat on the stem rim. Make sure the hex (4) screw that holds the handle is tight enough. If you have removed the handle for any reason, make sure you adjust it when it is in the closed (back) position. Tighten the water diffuser.

NB! Water diffuser has fine threads, so be careful not to strip the threads when tightening.