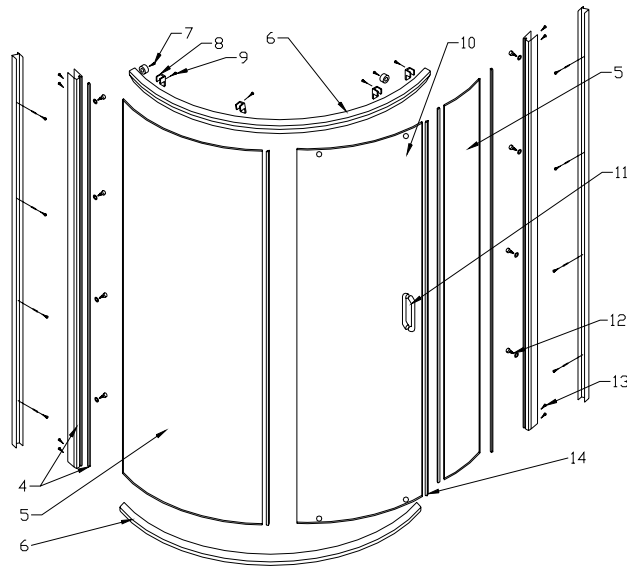




DLD-27 Shower Enclosure Installation and User's guide

I. Mounting Preparation

1. After opening the case, read this introduction carefully, check all the packed parts, examine the shower cabinet for shipping damage. If the unit has been damaged or has a finishing defect, please contact your local distributor within 2 business days. Please note that DreamLine Guarantee will not cover shipping damage or such finishing defects once the unit has been installed. Your distributor's responsibility for damage in transit is limited after the shower package has been transferred to the transportation company, so you may have to contact the transportation company directly to report damage. Contact your distributor or DreamLine if you have any questions.
2. You should make sure that the floor is leveled and solid and will be able to support the total weight of the unit and its occupant. You should also consult your local building codes on questions on installation compliance standards.
3. Install all of the required plumbing and drainage before securing the shower. Use a competent and licensed (if required by local code) plumber for all plumbing installation.
4. Please insure that prior to the installation the floor is leveled and the walls are at right angles. While some adjustment in leveling of the tray is possible, irregular floor level or improper angle of side walls will result in serious problems for your installation.
5. Necessary Tools: Conventional woodworking tools, Screwdriver, Silicone sealant, Electric drill, Regular drill bits (1/8", 7/64"), Phillips screwdriver, Level, Measuring tape, Pencil and Stepladder. Bear in mind that you will need at least two people to assemble the unit.

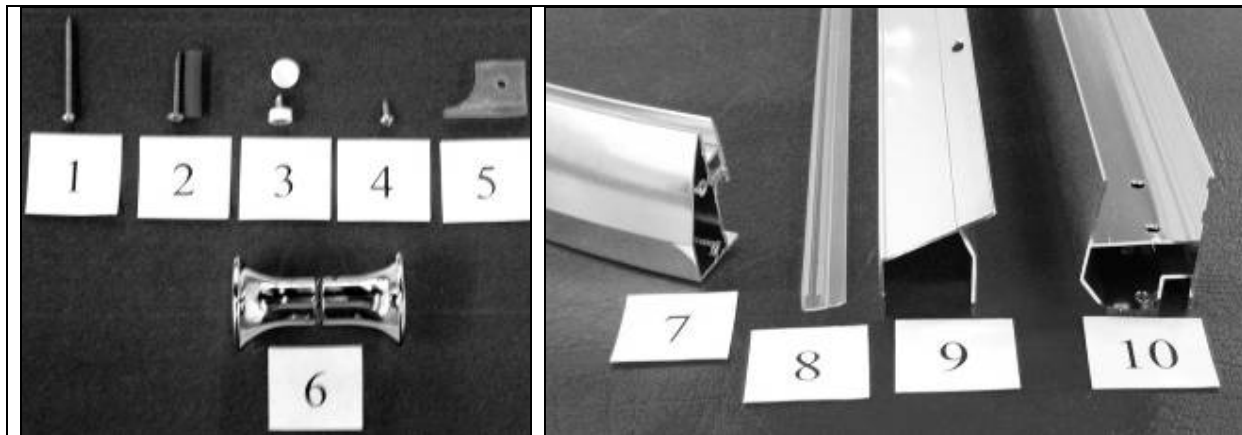


Diagram

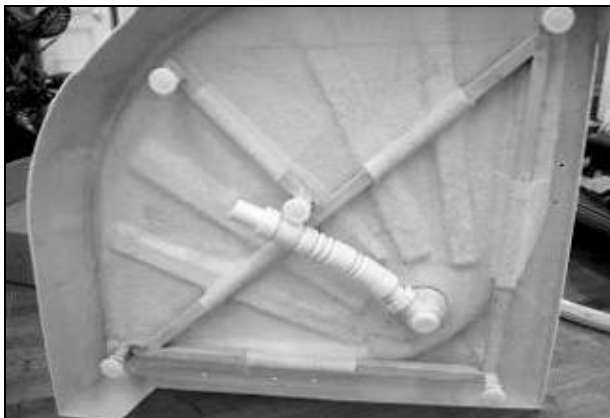
II. Packing List (diagram)

- | | |
|-------------------------------------|----------------------------------|
| ① 8 Plastic dowels | ⑧ 8 Glass holders |
| ② 8 Screws 4X30 | ⑨ 8 Screws (4X16) |
| ③ 2 Wall connecting profiles | ⑩ 1 Entry door |
| ④ 2 Metal profiles | ⑪ 1 pair of handles |
| ⑤ 2 Stationary glass | ⑫ 8 Screws |
| ⑥ 2 Guide rails | ⑬ 8 Guide rail connecting screws |
| ⑦ 4 Door stoppers and Screws M4X9.5 | ⑭ 3 Waterproof plastic strips |

Parts



Tray pre-installation instructions





1. Choose the place where you will locate the tray.
2. Unwind the legs to level the tray in case the surface is uneven.
3. Check on the drain if it fastened tight enough to make sure it won't leak after complete tray installation.
4. Check all the hose connections to prevent leakage. Your plumber may want to replace the flex hose to hard PVC pipes which is also possible.



One of the ways on how to change flex hose to hard PVC pipes:

Disconnect the flex hose from the shower drain unit. Fasten the 1 1/2" hard PVC pipe to the drain. Using the trap adaptor with washer and plastic nut fasten the PVC pipe to the adaptor from 1 1/2" to 2".

III. Mounting process

1. Place the wall connecting profiles (part #9) at correct wall position, make sure they are leveled to the tray and the wall (Step 1).
2. Mark the drill holes; remove the wall connecting profile and drill the holes (Step 2, 3)
3. Insert the plastic dowel into the holes using part #2 (Step 4).
4. Apply a layer of silicone to the surface of the wall connecting profile and fasten it tight to the wall using screw part #2 (Step 5,6).
5. Do not secure both wall connecting profiles to the wall. Fasten the one where the narrower stationary glass will be.
6. Using part # 1 (long screws) secure the bottom guide rail part #7 to the metal profile part #10. Please make sure the screws go into the designated threaded slots in the guide rail (Step 7).
7. Insert the stationary glass into the glass holders in the guide rail. Attach flexible waterproof strip on the edge and cut the strip to the full length of the glass (Step 8, 9).
8. Insert the stationary glass with the flexible waterproof plastic strip into the metal profile. For better insertion you may apply a thin layer of liquid soap. Push all the way inside (Step 10).
9. Repeat the same steps with the second stationary glass. Carefully, place the top guide rail on the stationary glass (Step 11).
10. Secure the top guide rail to the metal profile using the screws (part #1) (Step 12).
11. Slide the door into the top and bottom guide rails (Step 13).
12. Secure the second metal profile to the top and bottom guide rails, making sure the screws go into the designated threaded holes (Step 14).
13. Insert the metal profile with the glass assembly into the second wall connecting profile that was not fastened to the wall (Step 15).
14. Clean the surfaces of the tray, bottom guide rail and the wall connecting profile and apply a layer of

- silicone on the surfaces to be attached to prevent from possible leaking Step 16, 17, 18).
15. Insert the metal profile with the glass assembly into the wall connecting profile that was fastened to the wall (Step 19).
 16. Push the whole assembly inside to fasten the second wall connecting profile to the wall, making sure the bottom guide rails sits on the tray (Step 20).
 17. Using part #4, 5 secure the rubber door stopper (Step 21).
 18. To fix the shower enclosure in place with the wall connecting profiles, ensure the door is functioning, closing tight and sliding smoothly. Drill the holes from inside of the shower enclosure and using the part #3 fasten the assembly to the wall connecting profiles (Step 22, 23).
 19. Place the screw cover on top (Step 24).
 20. To prevent the shower unit from leaking, make sure you seal it properly. Follow Steps 25-29 to seal the shower enclosure properly.
 21. Attach the door handles (Step 30).
 22. Attach waterproof plastic strips to the edges of the glass to prevent water from leaking out (Step 31).

IV. Sealing:

Apply clear silicone water sealant around the outside perimeter of any fixed shower components (horizontally between bottom of any fixed side glass panels and tray, as well as vertically between the wall, wall profiles and any side glass panels). Do not apply silicone on the inside of the shower – this will cause your shower unit to leak.

NOTE: *Allow 24 hours for the silicone to set before testing or using the shower.*

NOTE: *Improper application of silicone sealant may cause your shower to leak.*



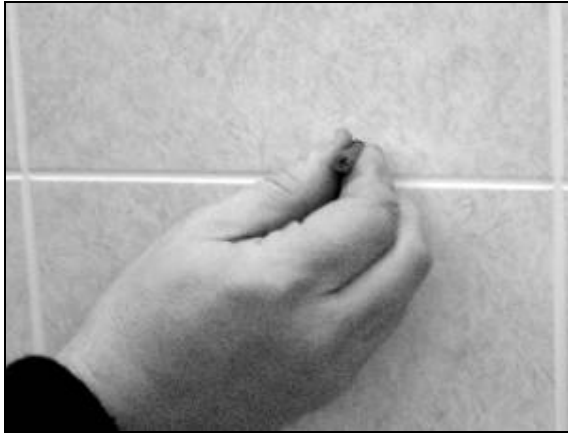
Step 1



Step 2



Step 3



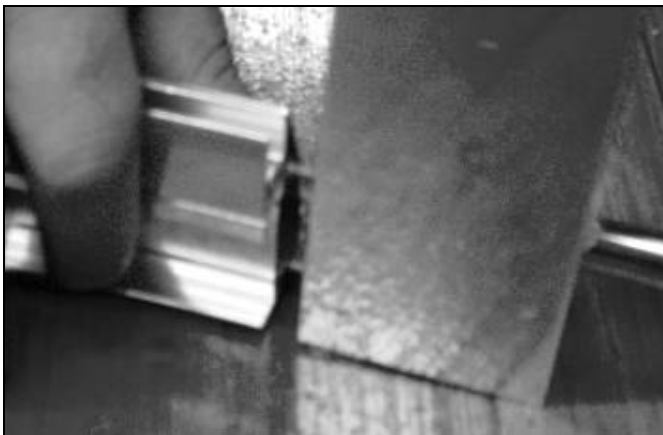
Step 4



Step 5



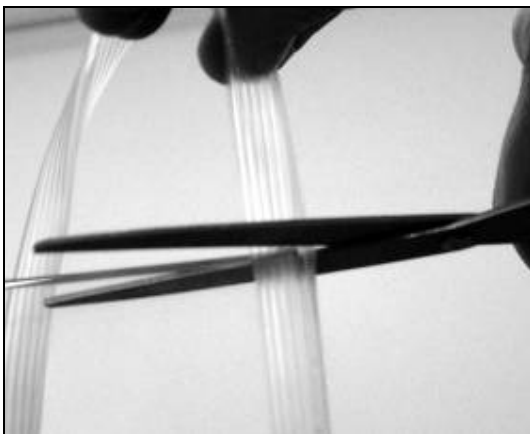
Step 6



Step 7



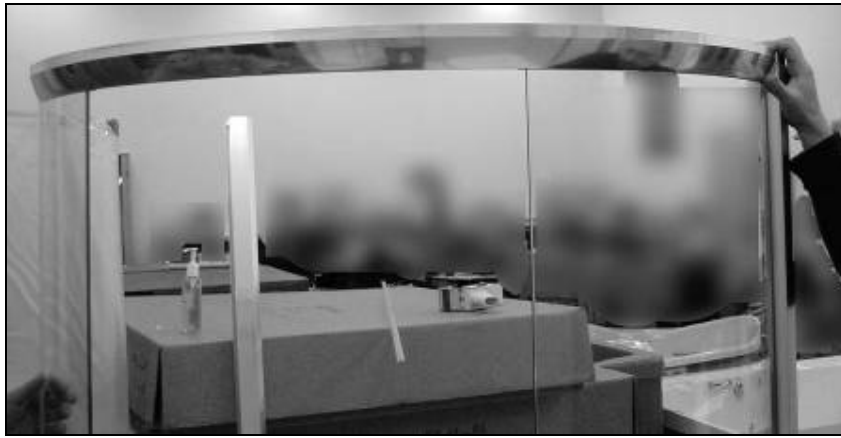
Step 8



Step 9



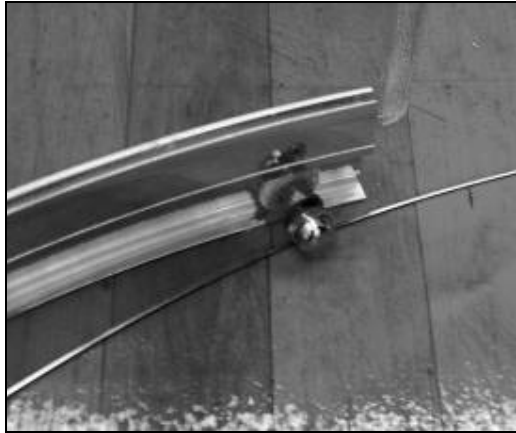
Step 10



Step 11



Step 12



Step 13



Step 14



Step 15



Step 16



Step 17



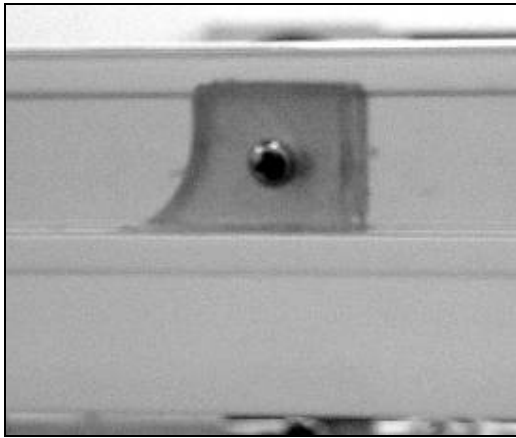
Step 18



Step 19



Step 20



Step 21



Step 22



Step 23



Step 24



Step 25



Step 26



Step 27



Step 28



Step 29



Step 30

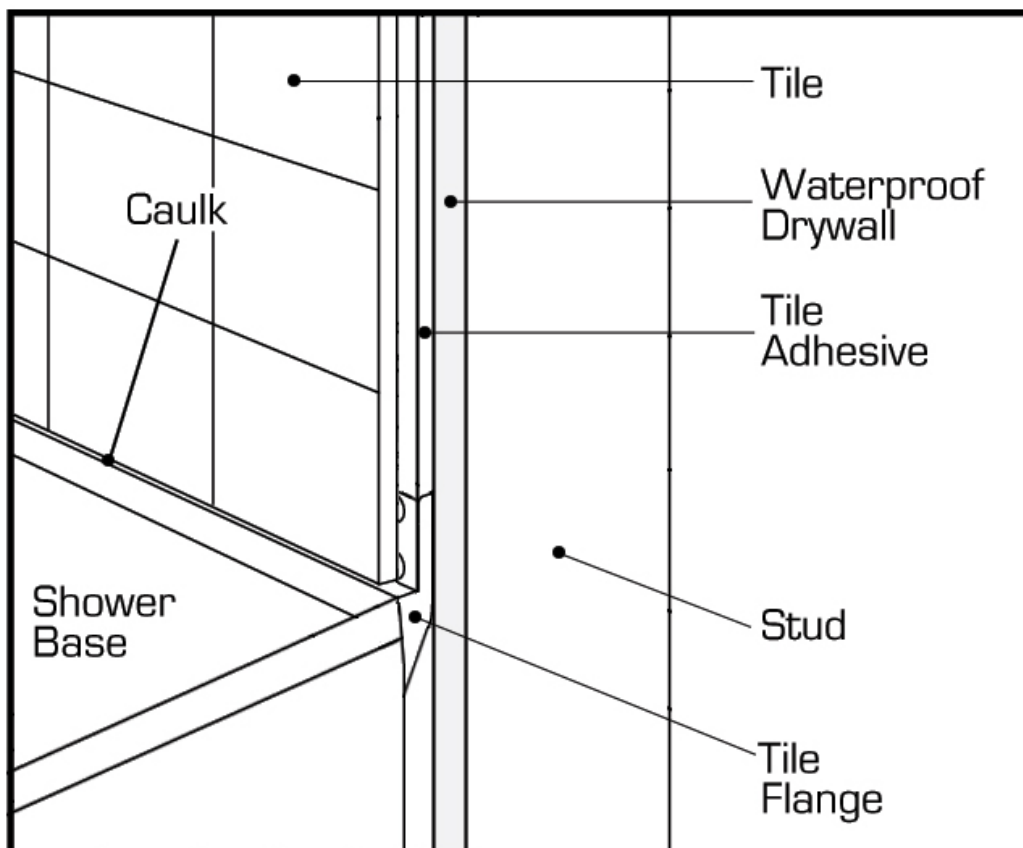


Step 31



Installation instructions for Shower Trays with Add-on Tile Flange

1. Complete your shower framing
2. Attach waterproof drywall to your framing studs
3. Place your tray in desired location and level.
4. The tray is to be placed flat against the waterproof drywall. Prior to placing the tray, apply silicone to the back side of the tray tile flange (the side being placed flat against the waterproof drywall)
5. Secure the tray's add-on tile flange to the waterproof drywall with screws.
6. Apply tile adhesive onto the waterproof drywall and tile flange.
7. Place tile onto the tile adhesive. The tile will go down to the tray's tile flange and final tiles will rest on the edge of the tile flange.
8. After tile is fully set, apply another layer of silicone caulking on the entire perimeter of the tile.



DreamLine

Shower Enclosure, Jetted Shower and Shower Columns

Limited Warranty

CONSUMER RESPONSIBILITIES

Your DreamLine Shower Products will remain beautiful for many years if you take care of them. Some of the waterproofing plastic strips and other seals will need to be replaced when they show signs of wear, yellowing, or are not watertight. Refer to the parts list of your manual for all seals. Water conditions in various parts of the country will determine any extra cleaning attention you may have to give your new shower enclosure or jetted shower. DreamLine does not recommend the use of harsh abrasive cleansers on any of its products. Harsh cleansers will damage the metal or glass finish on your shower enclosure or jetted shower.

REQUESTING SERVICE

Here's what you need to do if you require service:

1. Contact the dealer or contractor who sold and installed the product. They should be able to solve any problems you may have.
2. If your dealer or contractor cannot solve the problem, they will contact or supply you with the name of the local DreamLine Distributor or a DreamLine Direct Technical Specialist
3. If you are unable to obtain warranty service through either your contractor or DreamLine distributor, please write us directly at

DreamLine
2840 Pine Road, Bld D
Huntingdon Valley, PA 19006
ATTN: Customer Service Department,

4. Include all pertinent information regarding your claim, including a complete description of the product, model numbers, colors, finishes, and the date the product was installed. Include a description of the problem, and a photocopy of your invoice and purchase receipt(s) for the products involved. Also please provide information the name and contact telephone numbers of the contractor and distributor.

Please note that under any circumstances, DreamLine products should not be returned to your dealer, distributor or directly to DreamLine without a written Return Merchandise Authorization (RMA).

LIMITED ONE-YEAR WARRANTY

This warrantee extends only to the original owner/end-user for personal household use only. For commercial uses, additional limitations may apply.

DreamLine warrants acrylic surface against blistering or cracking and chipping resulting from defect in the acrylic surface material when used under normal condition and service for a period of one (1) year from the purchase date.

DreamLine warrants mirrors, shower doors, shower massage systems, faucet finishes and fittings to be free from defects in workmanship and materials under normal use and service for a period of one (1) year.

DreamLine further warrants the structure of the acrylic shell against loss of water through the fiberglass laminate of the acrylic body as a result of defect in materials and workmanship for a period of five (5) years from the purchase date.

DreamLine will, at its election, repair, replace, or make appropriate adjustment where DreamLine optional inspection discloses any such defects occurring in normal usage within the warrantee periods. **Please note that DreamLine is not responsible for installation or removal costs.**

Improper modification of any enclosure, jetted shower or shower column components may void the warranty - so please install the product as directed in the manual. This warranty does not cover any claim arising from abuse, misuse, negligence, accident, improper installation or operations on the part of the purchaser. This warranty is void if the DreamLine product is subject to alterations, or if repairs are attempted by anyone other than an authorized agent of DreamLine. This warranty does not extend to any plumbing or components installed by dealers, installers or by any party other than DreamLine.

Implied warranties, including that of merchantability or fitness for a particular purpose, are expressly limited in duration to the duration of this warranty. DreamLine disclaims any liability for special, incidental, or consequential damages.

Some states do not allow limitations on how long an implied warranty lasts or the exclusion or limitation of special, incidental, or consequential damages, so these limitations and exclusions may not apply to you. This warranty gives you specific legal rights. You may also have other rights which vary from state to state. This limited warranty provides specific legal rights as they apply within the USA, and other rights may be available, but may vary from country to country.

This is our exclusive written warranty for DreamLine Enclosure, Jetted Shower and shower Column Purchases made after May 2004. DreamLine reserves the right to modify this warranty at any time, and the consumer understands that such modification will not alter the warranty conditions applicable at the time of the sale of the product.