



DLVTS-R Glass Round Towel Stand Installation Instructions

IMPORTANT

Please read carefully the following instructions before installing your glass towel stand. If you have any questions on this glass towel stand installation - please call our technical support specialists Monday to Friday 9:00AM – 5:00PM EST at 1-866-731-8378 Option 3 or e-mail our technical support group at support@BathAuthority.com

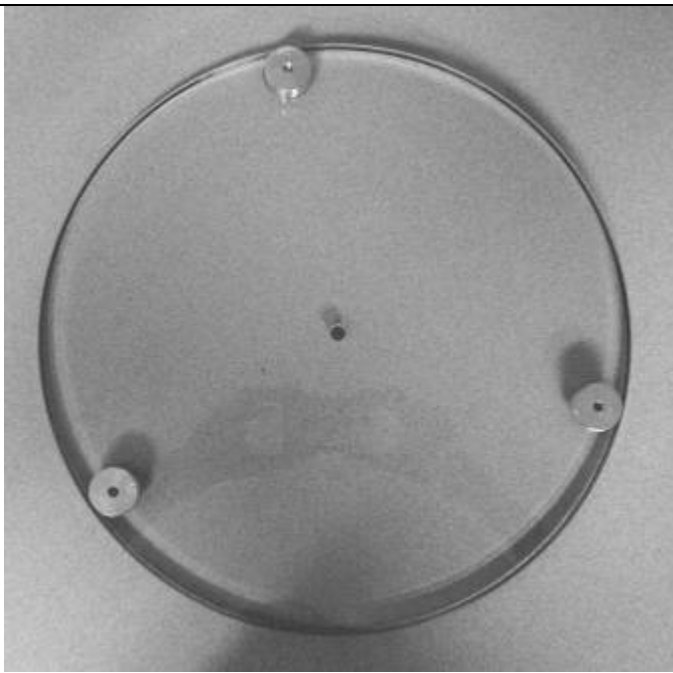


Our product may have changes without prior notice

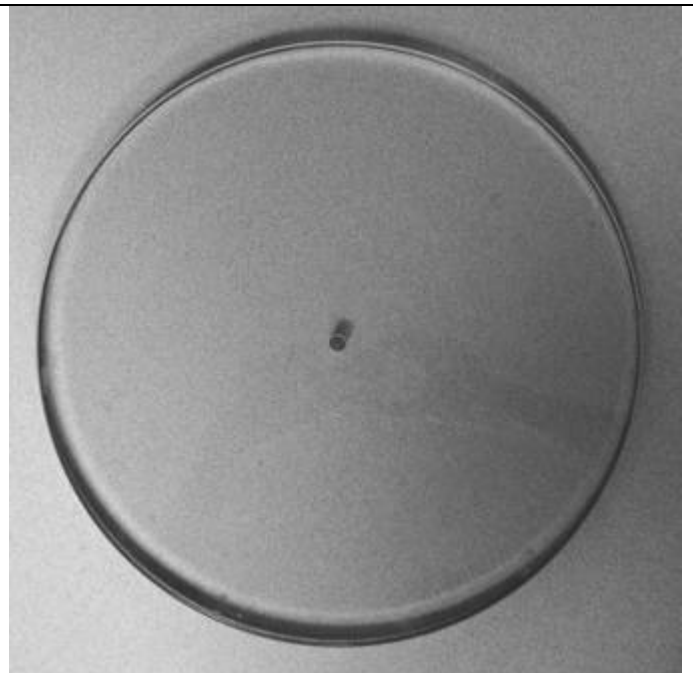
Preparation

After opening the box, read this introduction carefully. Examine for shipping damage. If the unit has been damaged or has a finishing defect, please contact your local distributor within 3 business days. Please note that **Bath Authority™ / DreamLine™ will not replace any damaged product or parts free of charge after 3 business days or if the product has been installed.** Contact your distributor if you have any questions.

Parts List



A. Bottom shelf – 1 pc



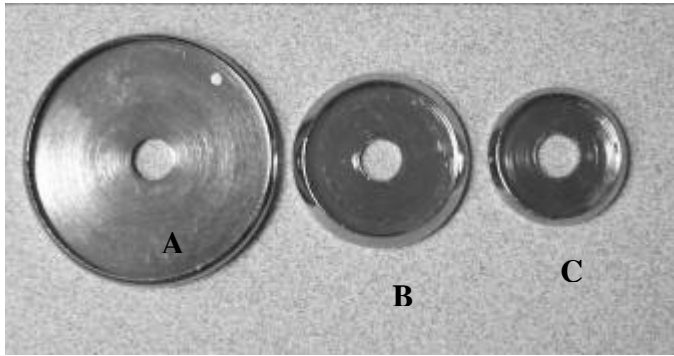
B. Top shelf – 1 pc



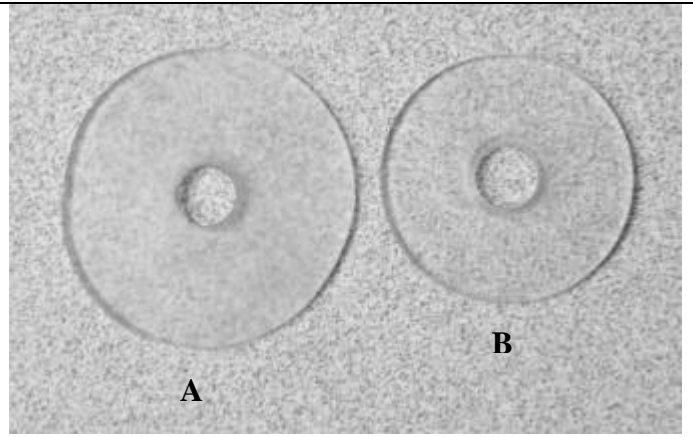
C. Middle rod – 1 pc



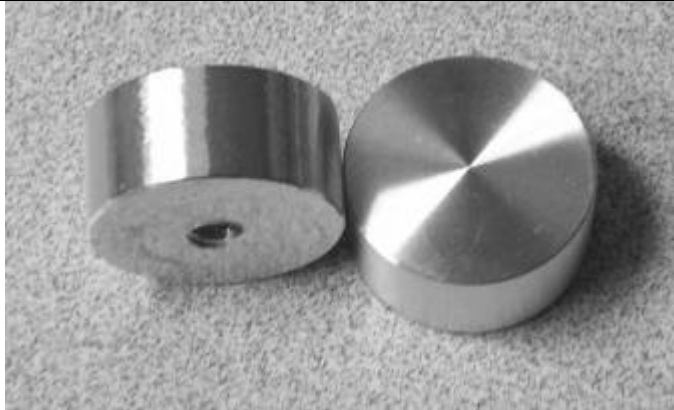
D. Top L-shape rod – 1 pc



1. Metal washer – 1 pc each



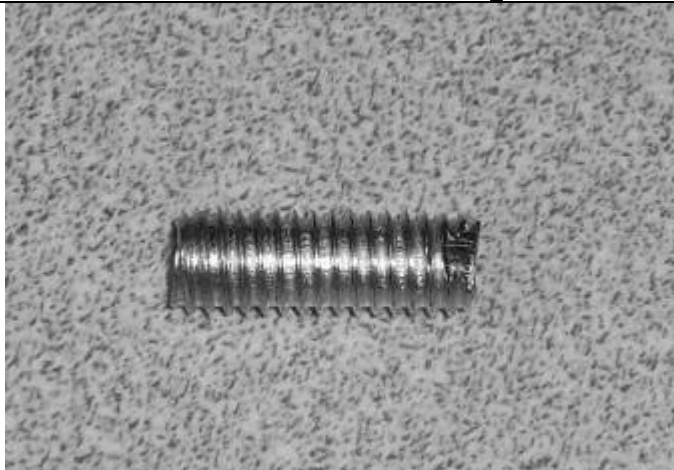
2. Rubber washer – 1 pc each



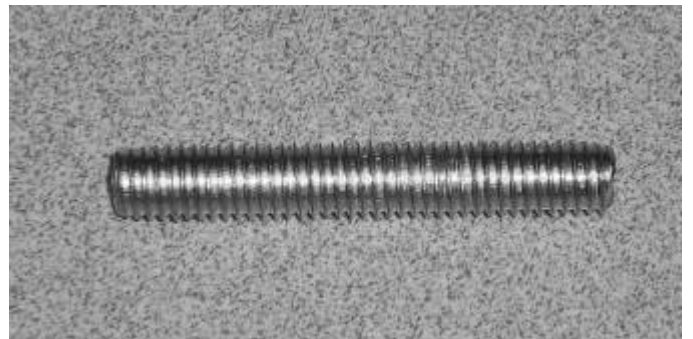
3. Stand foot – 3 pcs



4. Bolt – 1pc



5. Thread stud – 3 pcs
(size: 5mm x 10mm)



6. Thread stud – 1 pc
(size: 7mm x 50mm)

Now you have checked that all components are there, you are now ready to start the installation of your Dreamline Glass Towel Stand.

Glass Round Towel Stand Installation

1. Locate **bottom shelf (A)** and **thread stud (5)**. Screw in the thread stud into the feet pre-installed on the bottom shelf (Fig. 1).
2. Locate **stand feet (3)**. Screw them onto the thread studs (Fig. 2).
3. Locate **bolt (4)**. Thread it through the bottom shelf so the bolt threads are facing up and the stand feet are facing down (Fig. 3).
4. Locate **metal washer (1A)**. Place it on top of the bolt (Fig. 4).
5. Locate **middle rod (C)**. Secure the middle rod with the bolt and metal washer on the bottom shelf (Fig. 5).
6. Locate **thread stud (6)**. Screw it into the middle rod (Fig. 6).
7. Locate **metal washer (1B)**. Place it on the middle rod flat part should be facing up (Fig. 7).
8. Locate **rubber washer (2A)**. Place it on the metal washer (Fig. 8).
9. Locate **top shelf (B)**. Place it on top of the rubber washer (Fig. 9).
10. Locate **rubber washer (2B)**. Place it on the top shelf (Fig. 10).
11. Locate **metal washer (1C)**. Place it on the rubber washer flat part should be facing down (Fig. 11).
12. Secure top L-shape rod with the thread stud. Make sure the assembly is tight and steady (Fig. 12).

Fig. 1

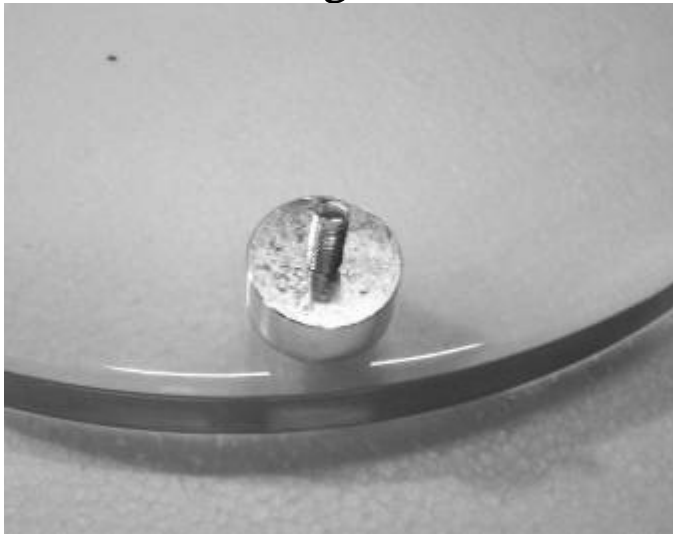


Fig. 2

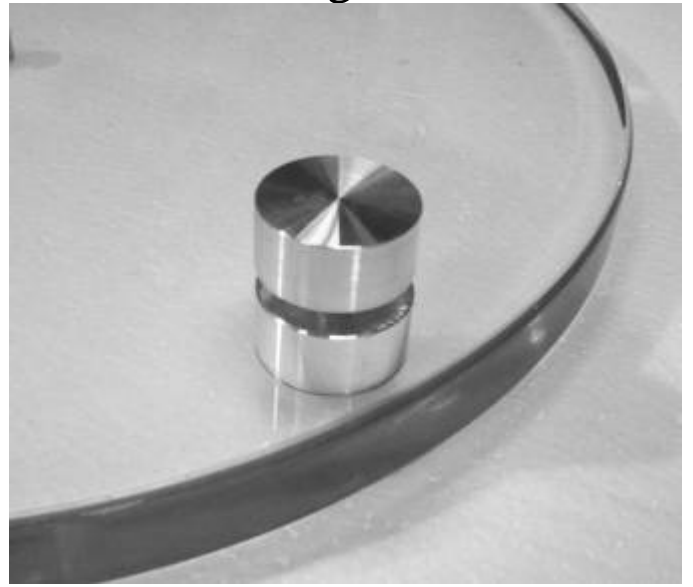


Fig. 3



Fig. 4



Fig. 5

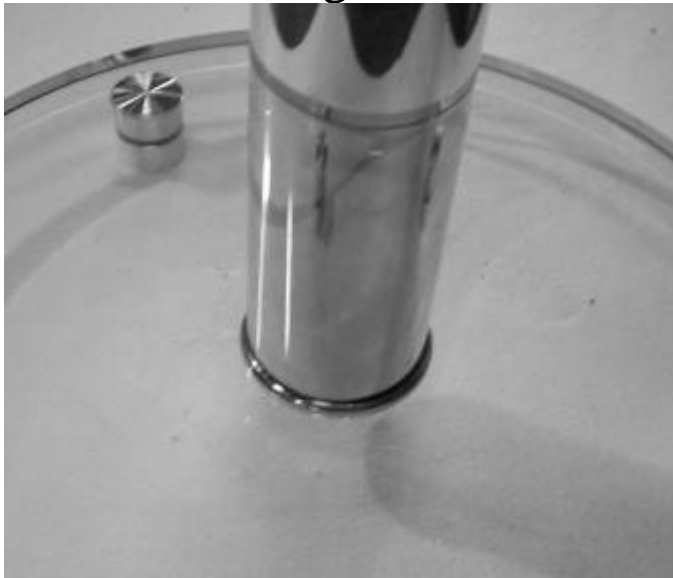


Fig. 6



Fig. 7



Fig. 8



Fig. 9

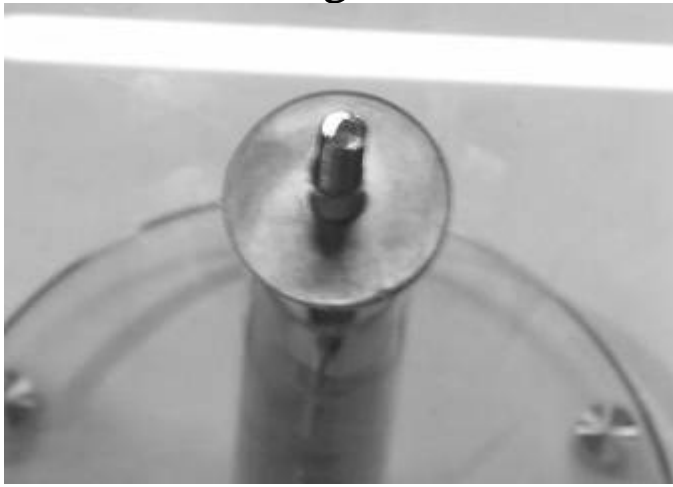


Fig. 10

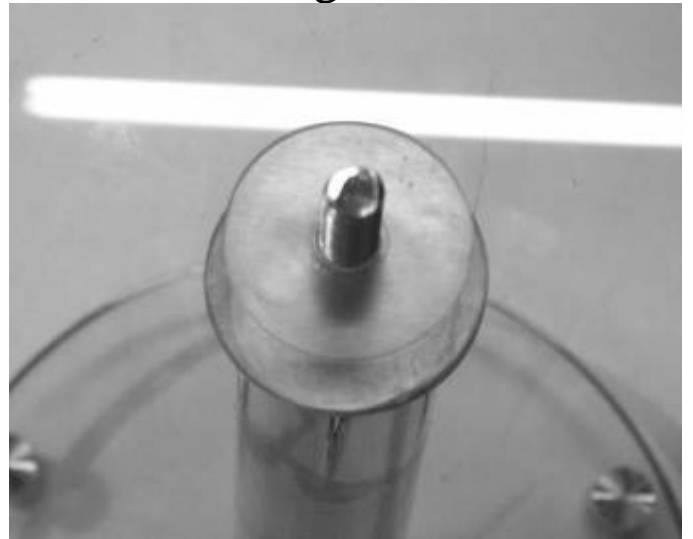


Fig. 11



Fig. 12

