

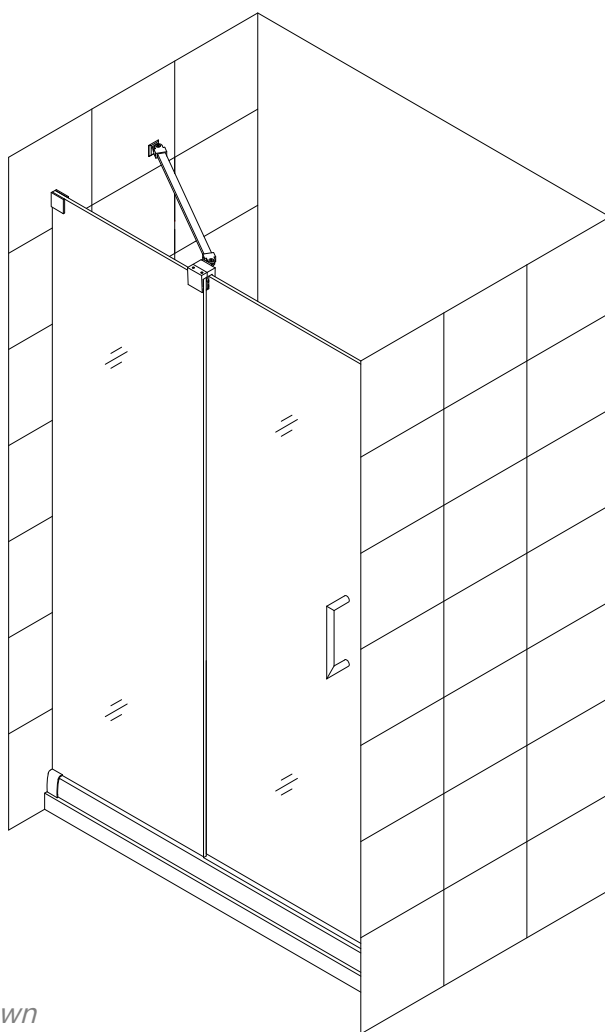


## MIRAGE

### SHOWER DOOR INSTALLATION INSTRUCTIONS

#### IMPORTANT

**DreamLine®** reserves the right to alter, modify or redesign products at any time without prior notice. For the latest up-to-date technical drawings, manuals or any other details please refer to your model's web page on **[BathAuthority.com](http://BathAuthority.com)**



*Right-Hand door installation shown*

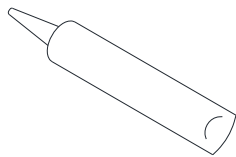
**Please read these instructions carefully before installing. If you have any questions regarding installation, please contact our technical support specialists Monday through Friday 8:00 AM – 7:00 PM EST at Phone: [1-866-731-2244](tel:1-866-731-2244), Fax: [1-866-857-3638](tel:1-866-857-3638) or e-mail our technical support group at [Support@BathAuthority.com](mailto:Support@BathAuthority.com)**

**For more information about DreamLine® products please visit [www.BathAuthority.com](http://www.BathAuthority.com)**

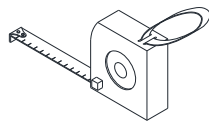
## Preparation

1. Prior to installation, examine all boxes and packages for shipping damage and compare the piece count with your packing slip. After opening all boxes and packages read this introduction carefully. Check that all of the needed parts are included in the package by checking off the components on the "Detailed Diagram of Shower Door Components". If the unit has been damaged, has a finishing defect, or has missing parts, please contact our customer support department within **3 business days** of the delivery date. **Please note that DreamLine® will not replace any damaged products or missing parts free of charge after 3 business days or if the product has been installed.** Feel free to contact DreamLine® if you have any questions, and please provide an order number, job name or other proof of purchase to help us identify your original order.
2. **Please note that you should consult your local building codes with questions about installation compliance standards. Building and plumbing codes may vary by location, and DreamLine® is not responsible for code compliance standards for your project and will not accept any returns.**
3. If this unit is going to be installed in a new construction, install all of the required plumbing and drainage before installing the shower. **Use a competent and licensed (if required by local code) plumber for all plumbing installation.**
4. Prior to installation, ensure that the installation surface is leveled and solid and will be able to support the total weight of the unit. Also, make sure the walls are at right angles. Irregular installation surface level or improper angle of side walls will result in serious problems for your installation. Please, note that some adjustments and drilling might be necessary during the installation process.
5. This unit must be installed against finished walls and threshold.
6. **Please, NOTE! This door does not have out-of-plumb adjustment. Make sure your walls are vertical and your shower base or threshold is leveled.**

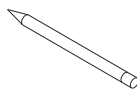
## Tools Required



Caulk



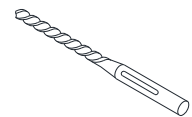
Tape Measure



Pencil



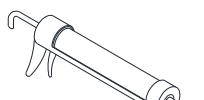
Phillips Screwdriver



Drill bit  
(Ø 5/16")



Level



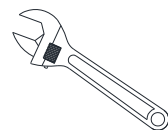
Caulk Gun



Electric Drill

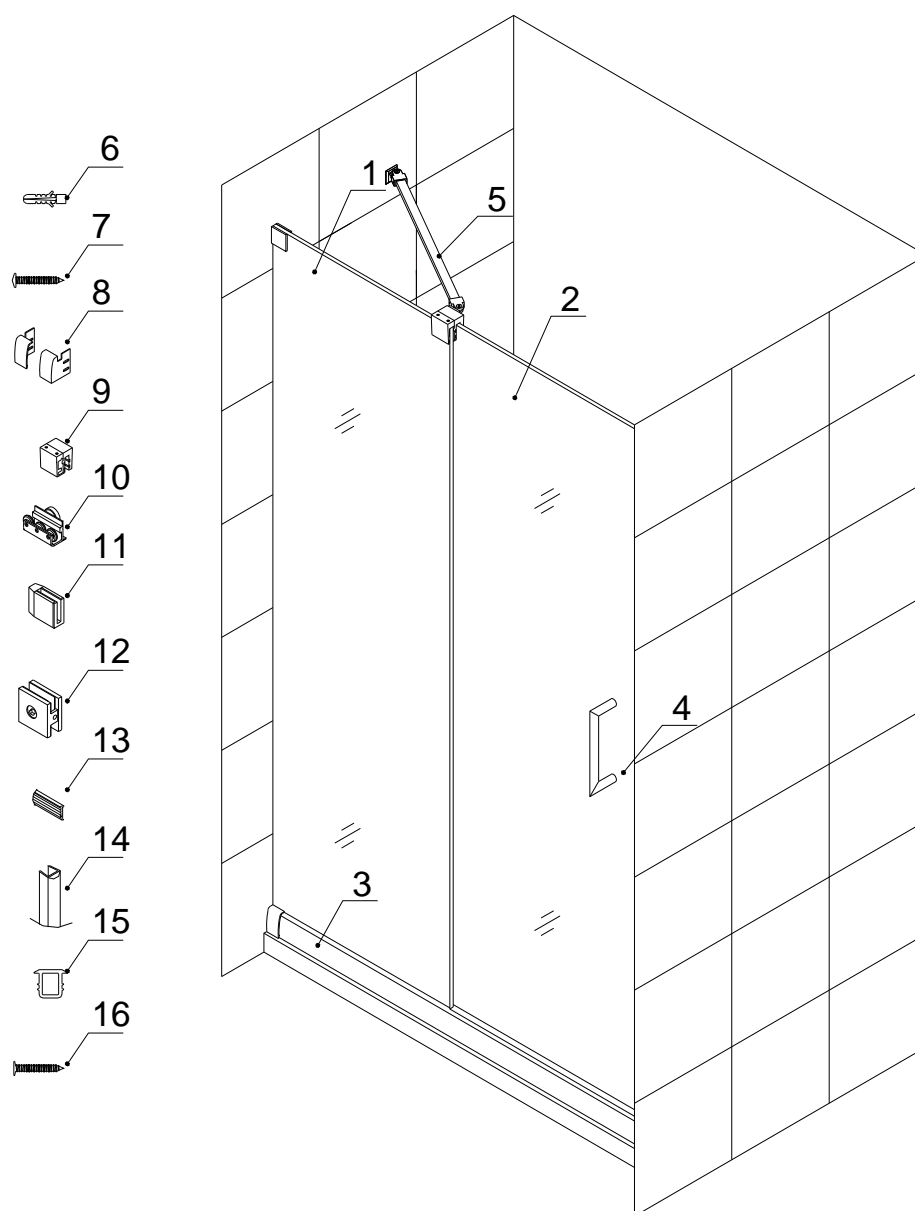


Hammer



Wrench

## Detailed Diagram of Shower Door Components



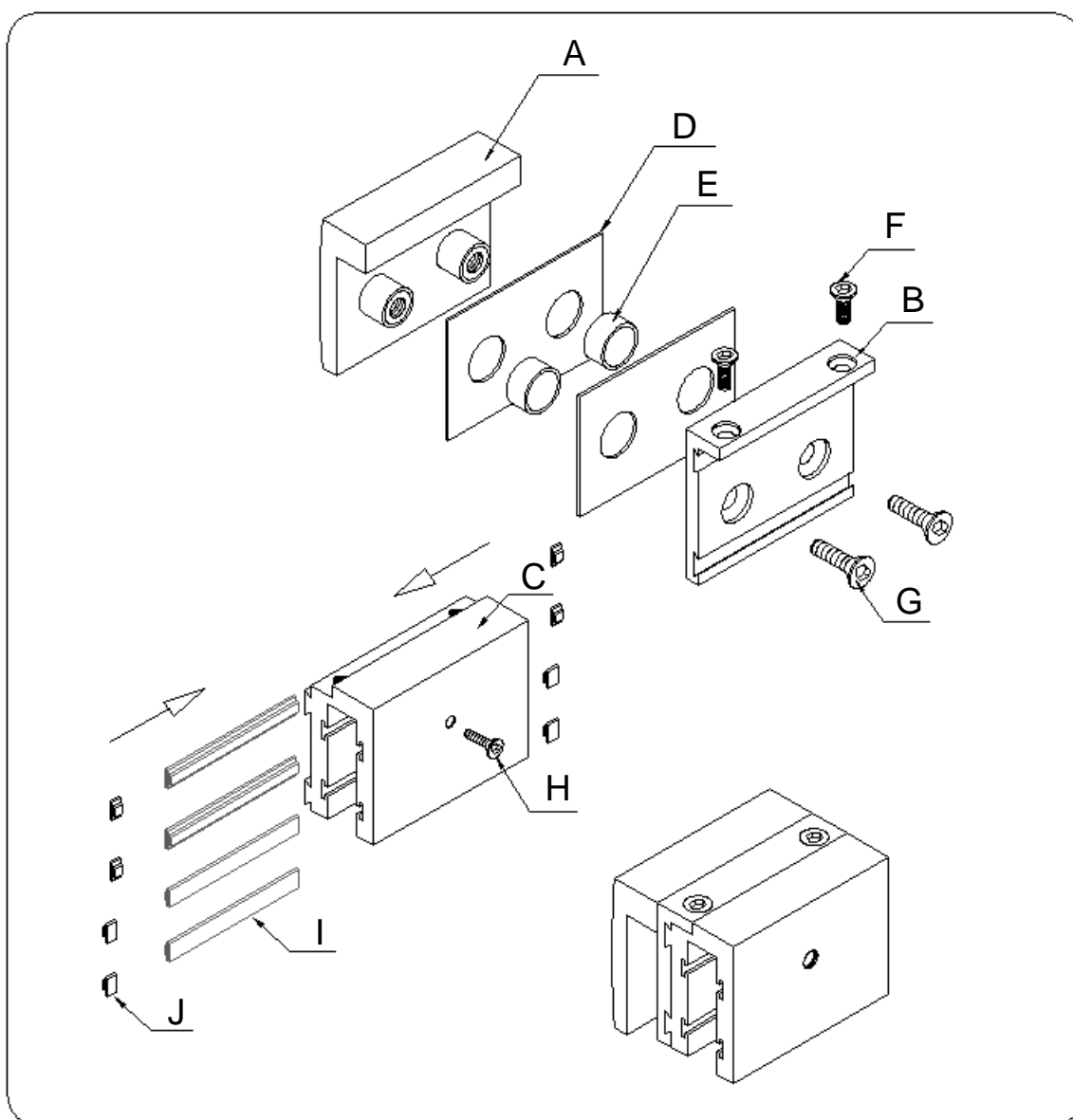
### Parts List

<b>01</b>	Stationary glass	1pc	<b>09</b>	Sliding bracket assembly	1pc
<b>02</b>	Glass door	1pc	<b>10</b>	Roller assembly	2pcs
<b>03</b>	Guide rail	1pc	<b>11</b>	Stopper block	1pc
<b>04</b>	Handle	1pc	<b>12</b>	Wall bracket	1pc
<b>05</b>	Support bar	1pc	<b>13</b>	Single side strip	1pc
<b>06</b>	Wall anchor	6pcs	<b>14</b>	Bumper strip	1pc
<b>07</b>	Round head screw ST4.2×55	5pcs	<b>15</b>	Seal gasket	1pc
<b>08</b>	Guide rail connector	1pair	<b>16</b>	Countersunk screw ST4.2×40	1pc

**NOTE:** Unpack your unit carefully and inspect it. Lay it out and identify all parts using the detailed diagram and packing list in your manual as a reference. Before discarding the carton, check for small hardware bags that may have fallen to the bottom of the box. If any parts are damaged or missing, please contact DreamLine® for replacement. The shipping boxes may contain extra parts not used in your model configuration.

**NOTE:** Retain these installation instructions for future reference.

## Sliding Bracket Assembly



<b>A</b>	Face Plate	1pc	<b>F</b>	Head screw M4×10	2pcs
<b>B</b>	Back Plate	1pc	<b>G</b>	Head screw M6×16	2pcs
<b>C</b>	Slider	1pc	<b>H</b>	Head screw M6×8	1pc
<b>D</b>	1/16" PVC gasket	2pcs	<b>I</b>	1/8" wool strip	4pcs
<b>E</b>	1/16" PVC washer	2pcs	<b>J</b>	Plastic bulkhead	8pcs

## Shower/Tub Door Installation

**NOTE:** The installation of this door requires two installers.

**NOTE:** The door can be installed on the shower base, tub or custom threshold.

**NOTE:** This door is reversible for right or left-hand door installation. The right-hand door installation is shown as an example throughout this manual. For the left-hand door installation, simply begin on the opposite wall and reverse the orientation of the steps shown.

1. Measure the finished opening width.  
This distance is marked as "**W**".

See Fig. 1 for details.

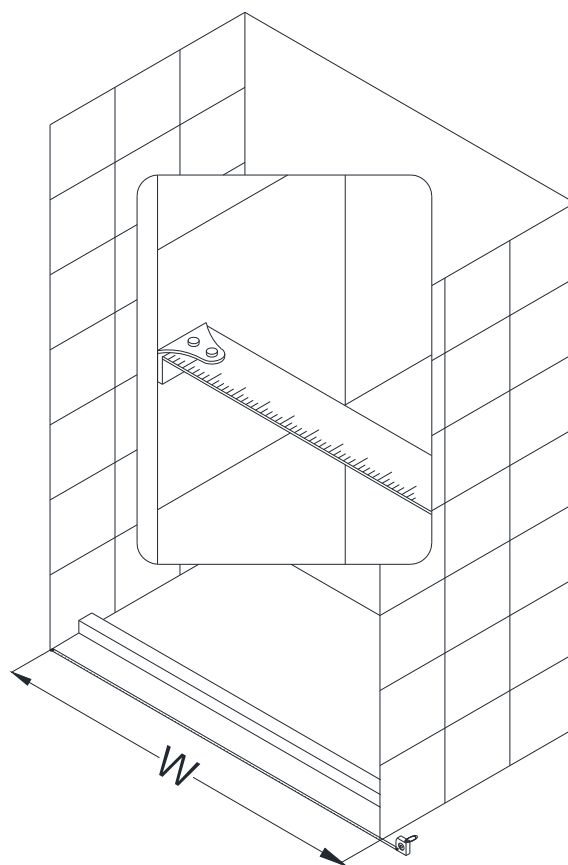


Fig. 1

2. Your **Guide rail (03)** has been precut for your Shower model opening width of **48"** or **60"** for shower width. If **W**-width of your wall-to-wall opening is equal to the size of your Shower model, it is unnecessary to cut the **Guide rail** and you can continue to Step#3. If **W**-width of your wall-to-wall opening is less than the size of your Shower model, you will need to cut the **Guide rail** from one side. The length to cut off will be **D**:  
**D**=Subtract **W** from the size of your Shower model.  
Model width (48" or 60") - **W** = cut off **D**

### **FOR EXAMPLE**

If your finished opening **W=47"**.

**D=48"-47"=1"**,

You have to cut **1"** off of the rail.

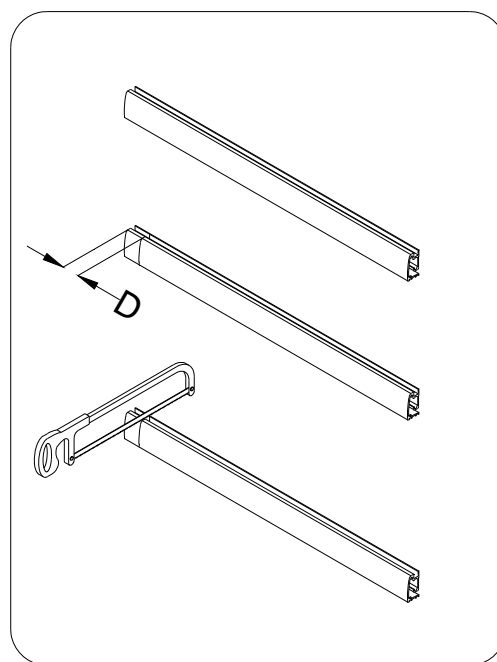


Fig. 2

See Fig. 2 for details.

3. Fasten the **Guide rail connector (08)** to one of the sides of the **Guide rail (03)**. Slide in two **Roller assemblies (10)** from the other end of the **Guide rail**. Fasten another **Guide rail connector** to the other side of the **Guide rail**. Position the **Guide rail** on base or threshold and trace through predrilled holes of **Guide rail connector** flange to mark wall. Drill the holes using a **Ø 5/16"** drill bit and insert the **Wall anchor (06)**. Apply a layer of waterproof silicone to the bottom side of the **Guide rail**. Place the **Guide rail** back on base or threshold and secure it with the **Round head screw ST4.2×55 (07)**.

See Fig. 3 for details.

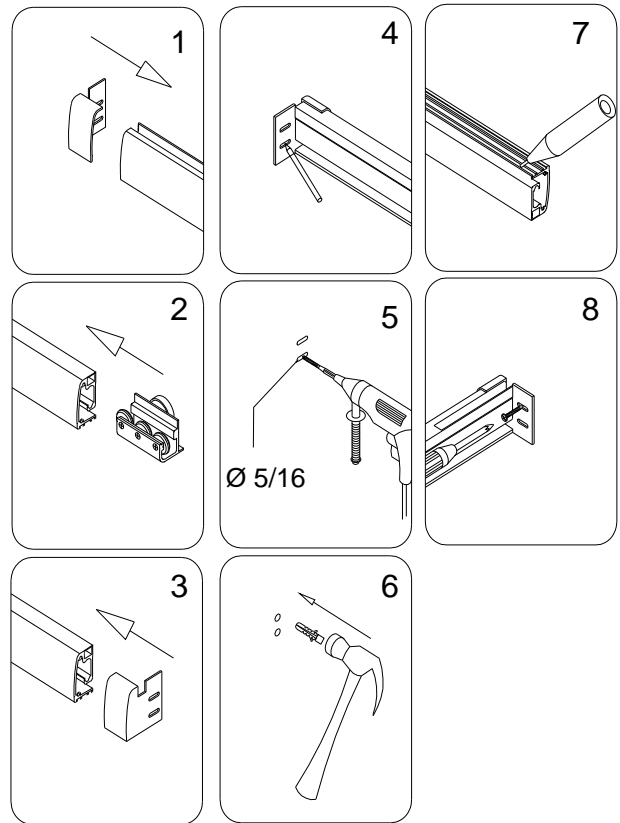


Fig. 3

4. View of the installed **Guide rail (03)** with the **Guide rail connectors (08)**.

See Fig. 4 for details.

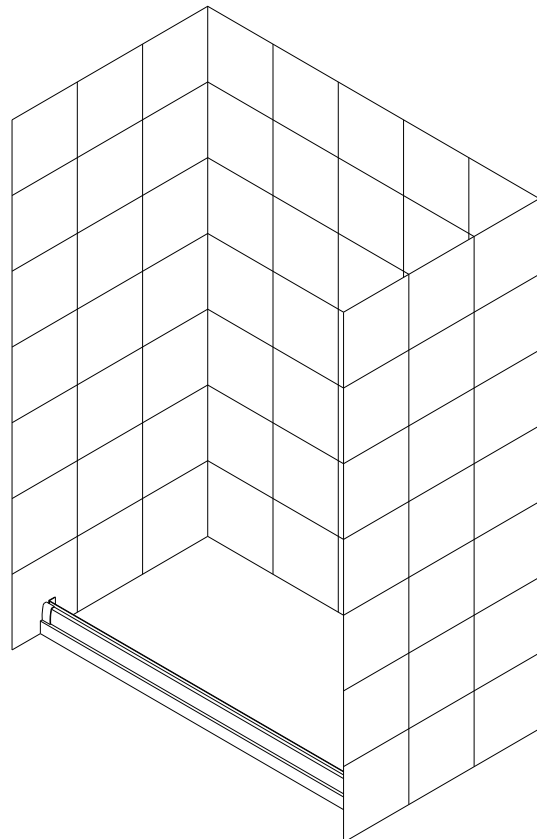


Fig. 4

5. Mount the **Wall bracket (12)** to **Stationary glass (01)**.  
Slide the glass into the channel of the **Guide rail (03)**.

See Fig. 5 for details.

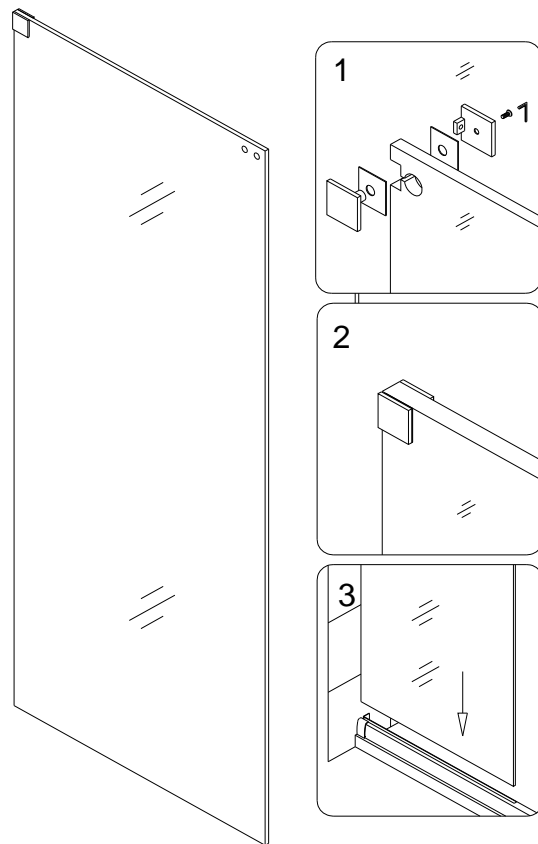


Fig. 5

6. Butt up **Stationary glass (01)** against the wall and level it vertically.

See Fig. 6 for details.

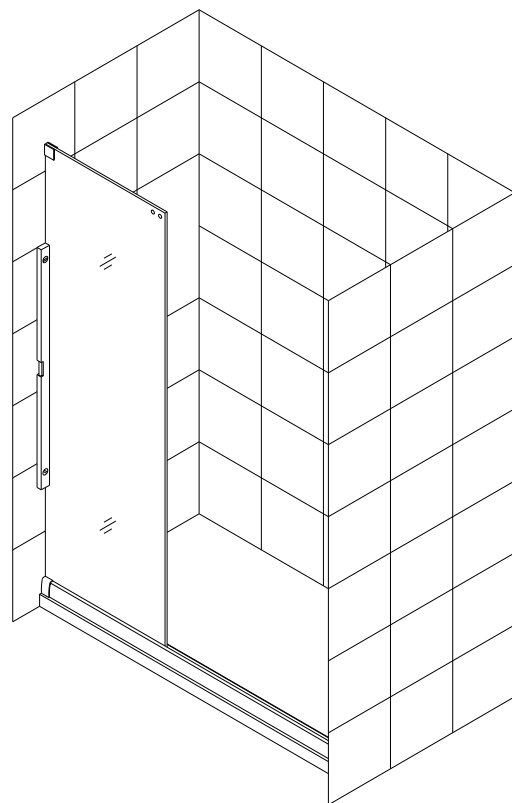


Fig. 6

7. Outline the position of the **Wall bracket (12)** on the wall. Set **Stationary glass (01)** aside. Remove the **Wall bracket** from **Stationary glass** and by replacing it to the outlined position mark the hole on the wall.

Drill the hole using a  $\varnothing 5/16''$  drill bit, insert the **Wall anchor (06)** and fasten the **Wall bracket** to the wall with the **Round head screw ST4.2×55 (07)**.

Put the **Stationary glass (01)** back into position and attach the face plate to the **Wall Bracket**.

See Fig. 7 for details.

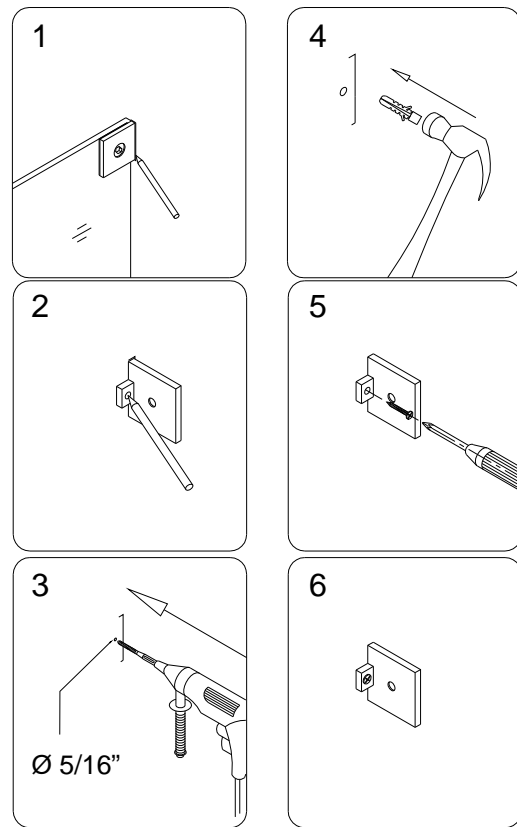


Fig. 7

8. Push the **Single side strip (13)** between the groove of the **Guide rail (03)** and **Stationary glass (01)** using wooden shims or other piece of wood.

See fig. 8 for details.

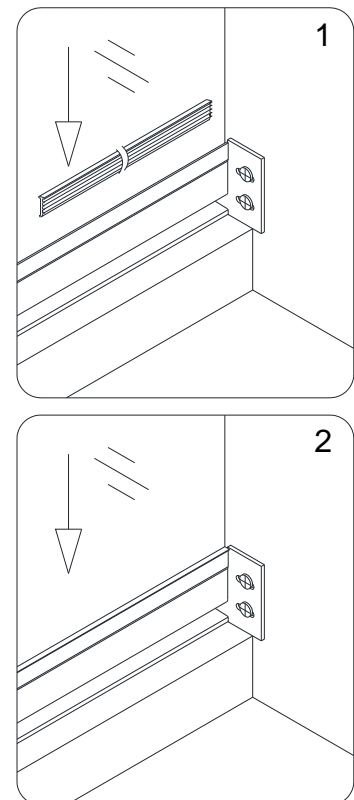


Fig. 8



**NOTE:** Please refer to **Sliding bracket assembly (09)** diagram on Page 4.

9. Disassemble the **Sliding bracket assembly**.

Mount the **Face Plate (A)** and **Back Plate (B)** on the top of **Stationary glass A (01)** with the **Head screw M6×16 (G)**.

Use **PVC gasket (D)** and **PVC washer (E)** in between glass and metal parts.

**NOTE:** Use only hand tools. Do not over tighten the screws.

See Fig. 9 and Fig. 10 for details.

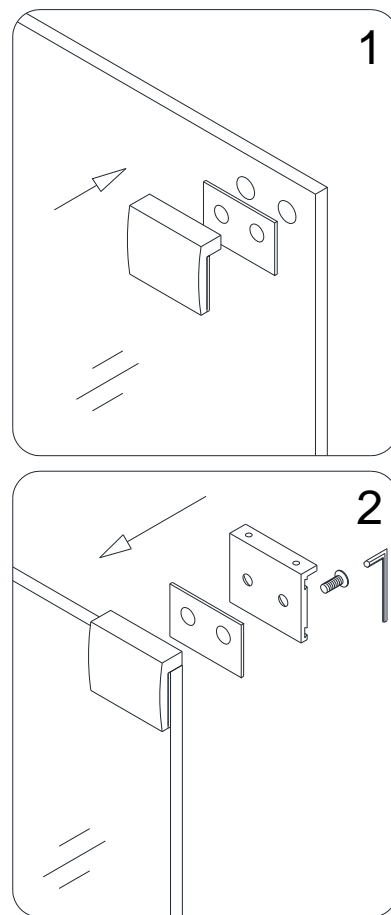


Fig. 9

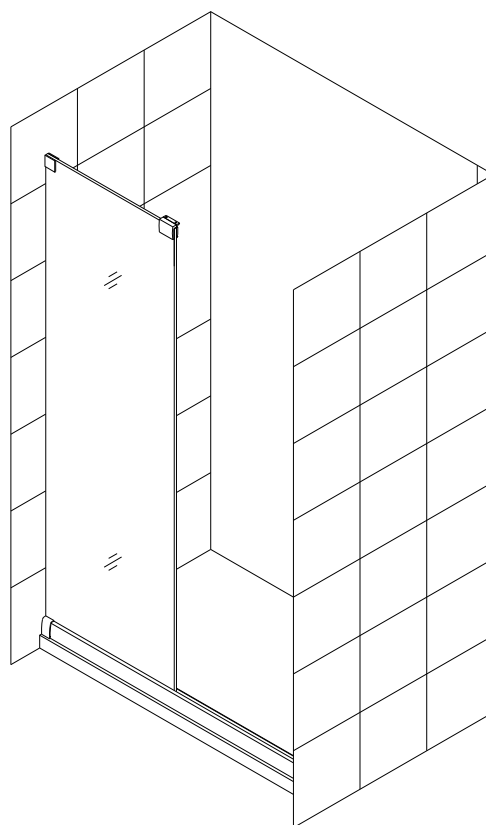


Fig. 10

10. Install the **Stopper block (11)** on the bottom of the **Glass door (02)**.

See fig. 11 for details.

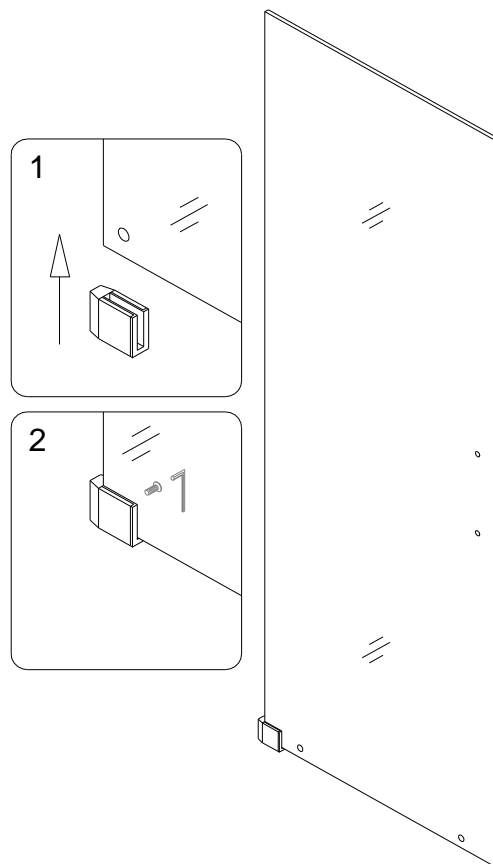


Fig. 11

11. Bring the **Glass door (02)** inside the shower. Remove nuts from the **Roller assembly (10)** bolts and spread the rollers against the installation holes on the **Glass door**. Fasten the **Roller assembly** to the **Glass door** through the predrilled holes.

**NOTE:** Steps 11 and Steps 12 require second person to hold **Glass door**. The **Glass door** will not stay by itself until you finish the Step 12.

See Fig. 12 for details

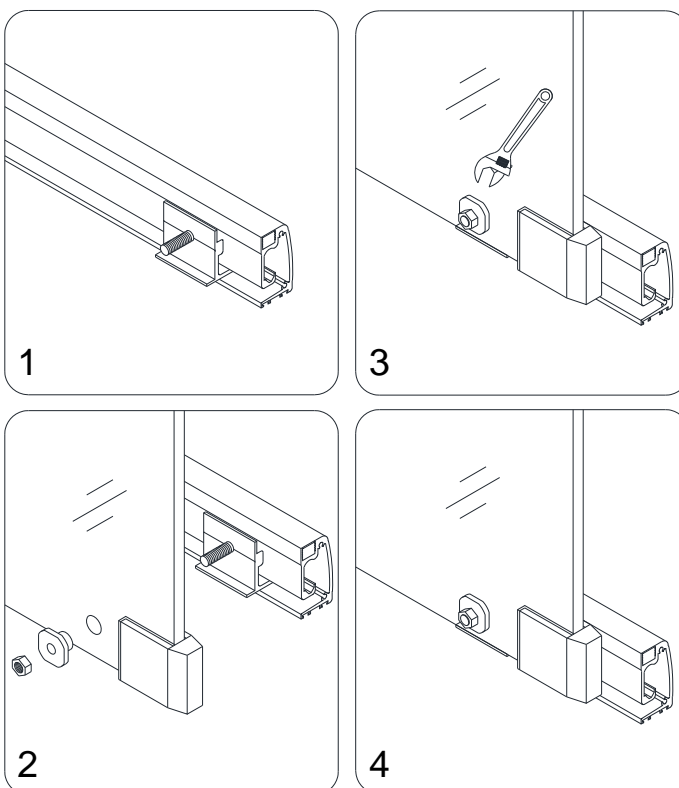


Fig. 12

NOTE: Please refer to **Sliding bracket assembly (09)** diagram on Page 4.

12. Place the **Slider (C)** over the top edge of the **Glass door (02)** and put the **Sliding bracket assembly** together using **Head screw M4 ×10 (F)**.

NOTE: **Sliding bracket assembly (09)** can be installed for either left or right hand configurations. These directions are written for right-hand configuration; See Page 14 for left hand configuration.

See Fig. 13 and Fig. 14 for details.

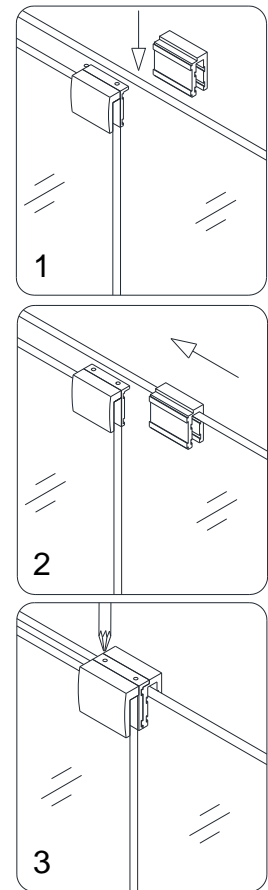


Fig. 13

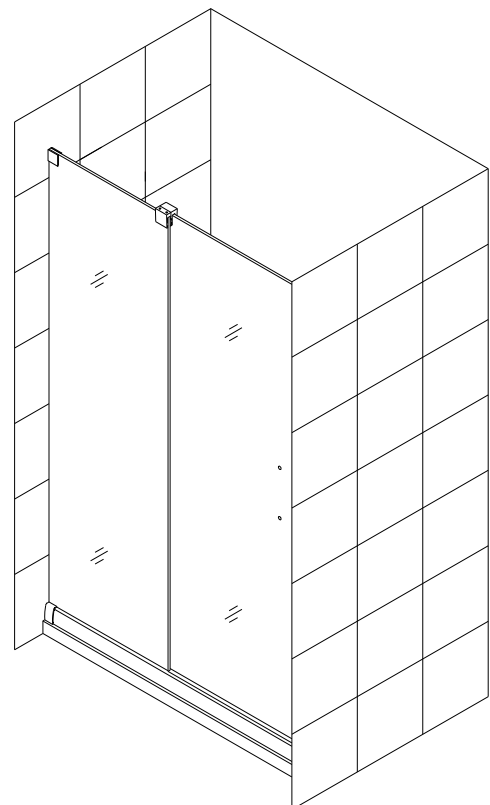


Fig. 14

13. Press the **Bumper strip (14)** on the vertical edge of the **Glass door (02)**.

Push the **Seal gasket (15)** into the channel of the **Guide rail (03)**.

See Fig. 15 for details.

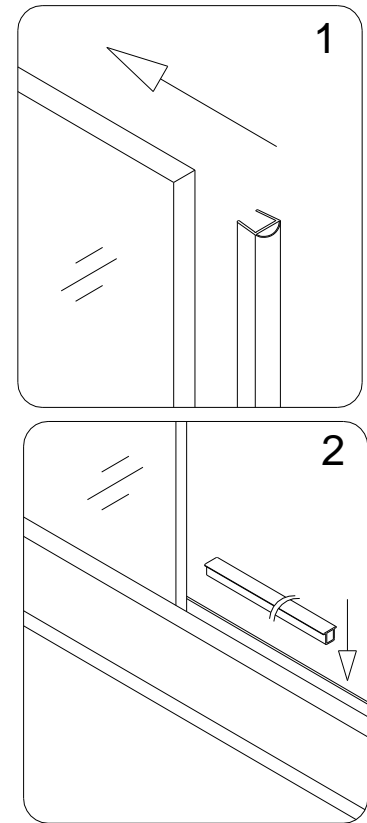


Fig. 15

14. Install the **Handle (04)** onto the **Glass door (02)**.

See fig. 16 for details.

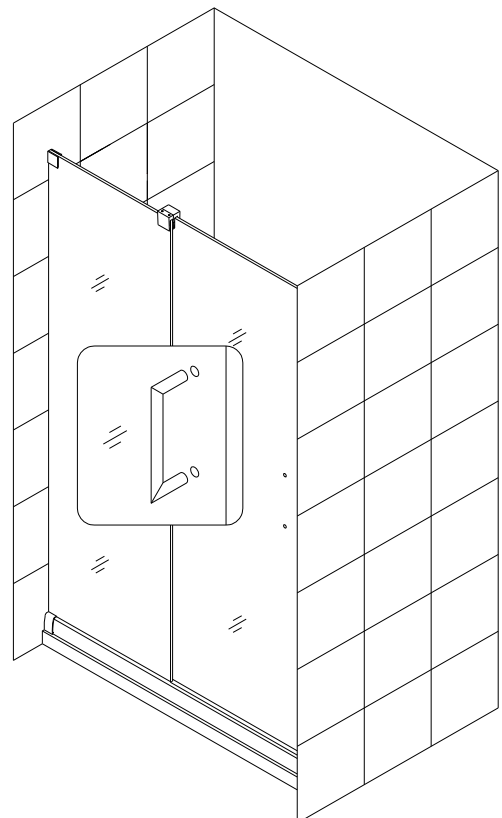


Fig. 16

15. Locate the **Support bar (05)** and temporarily fasten it to the **Sliding bracket assembly (09)** with the **Head screw M6×8 (H)**.

Adjust the bar to a proper position and level it horizontally. Hold it firmly and outline the wall bracket of the **Support bar** to mark wall with position.

Remove the **Support bar** and detach its wall bracket. Place the wall bracket of the **Support bar** against its outlined position on the wall and mark the hole for drilling.

Drill the hole using **Ø 5/16"** drill bit, insert the **Wall anchor (06)** and fasten the **Support bar's** wall bracket to the wall with the **Countersunk screw ST4.2×40 (16)**.

Attach the **Support bar** back to its wall bracket and **Sliding Bracket assembly** and tighten the screws to secure the glass.

See Fig. 17 for details.

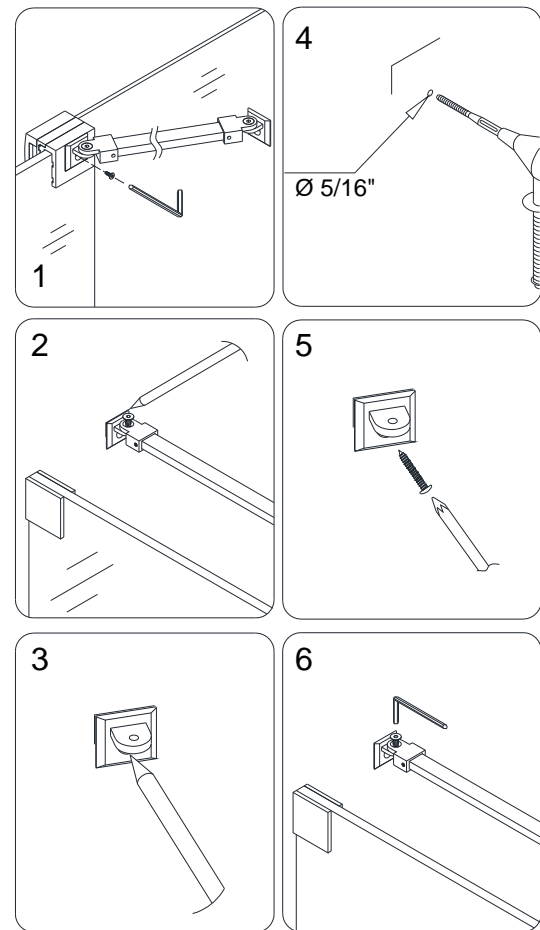


Fig. 17

16. Apply the sealant along the connection of **Stationary glass (01)** with the wall inside the shower, as well as between the **Guide rail (03)** and the threshold outside the shower.

See Fig. 18 for details.

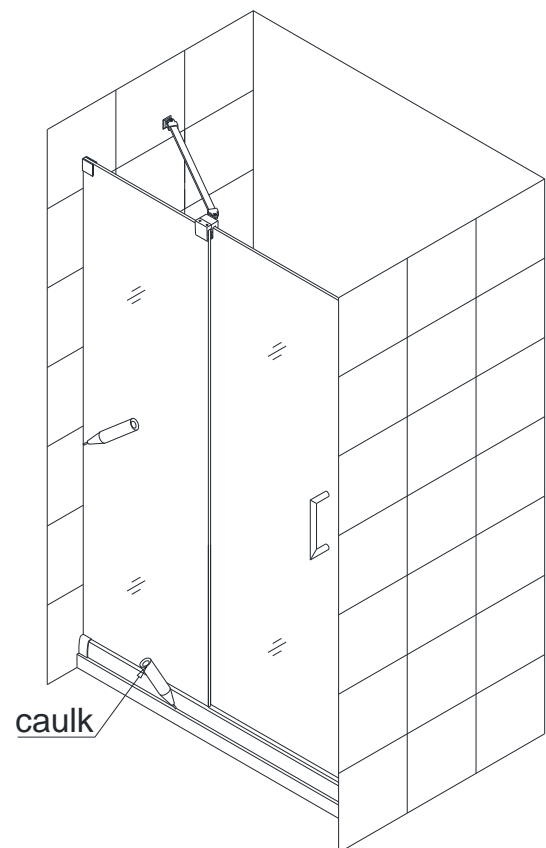


Fig. 18

**NOTICE:** The above installation steps are given for the right-hand configuration.

For left-hand configuration door, begin the **Stationary glass (01)** installation on the opposite wall.

See Fig. 19 for details.

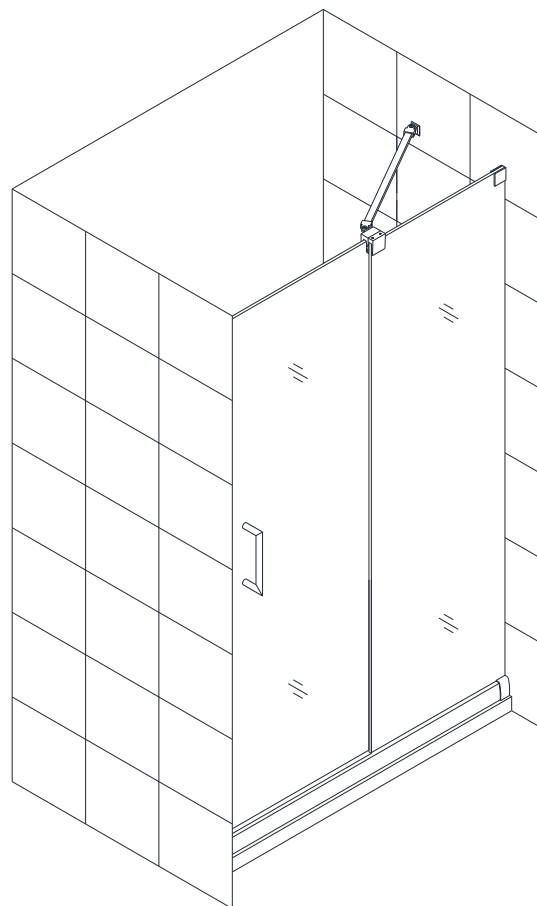


Fig. 19

## **Product Maintenance**

**BASES and BACKWALLS:** To ensure a long life for your acrylic back walls: wipe them off after each use with a soft cloth. To clean the acrylic back walls use non-abrasive sprays or cream based cleaners. Never use abrasive cleansers, metal brushes or scrapers that could scratch or dull the surface.

**GLASS:** To ensure long lasting life for your glass shower products: wipe them off after each use with a soft cloth. Rinse and wipe off the glass using either a soft cloth or a squeegee to prevent soap buildup and water spots. To prevent scratching the surface: never use abrasive cleaners and cleaning products that contain scouring agents. Never use bristle brushes or abrasive sponges.

**HARDWARE:** To ensure a long lasting finish: wipe off the metal parts after each use with a soft cloth. Do not use abrasive cleaners or cleaning products containing ammonia, bleach or acid. If accidentally used, rinse the surface as soon as possible to prevent finish peeling or corrosion. After cleaning the shiny finishes, rinse thoroughly and wipe dry with soft cloth. Clean stainless steel surfaces at least once a week. When applying stainless steel cleaner or polish, work with (not across) the grain. Never use abrasive sponge or cloth, steel wool or wired brushes.



---

TEL: [866-731-2244](tel:866-731-2244)

FAX: [866-857-3638](tel:866-857-3638)

[WWW.BATHAUTHORITY.COM](http://WWW.BATHAUTHORITY.COM)

For more information on [DreamLine® Shower Doors](http://www.BathAuthority.com) please visit [www.BathAuthority.com](http://www.BathAuthority.com)