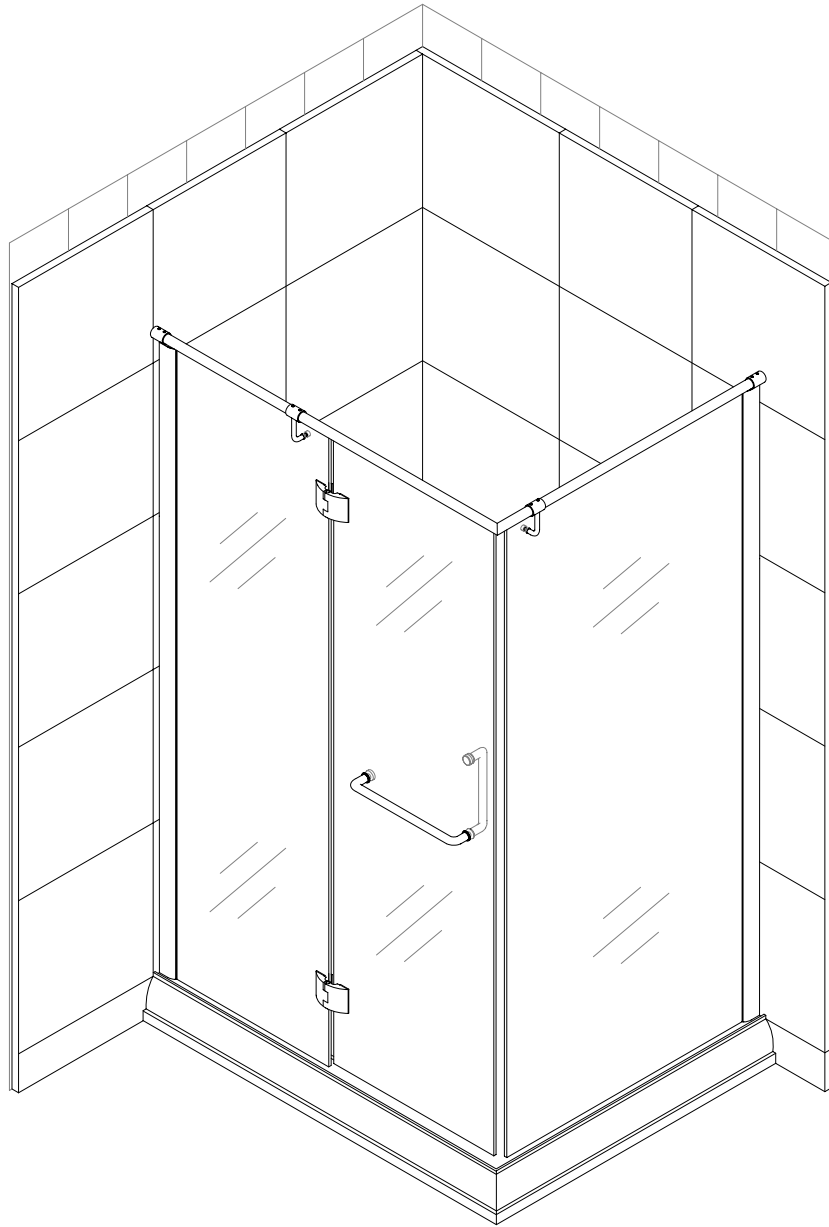




QUAD Rectangular Hinged Door Shower Enclosure Installation Instructions



IMPORTANT

Please read carefully the following instructions before installing your shower enclosure. If you have any questions on this shower enclosure installation - please call our technical support specialists Monday to Friday 9:00AM – 5:00PM EST at 1-866-731-8378 Option 3 or e-mail our technical support group at support@BathAuthority.com

Our product may have changes without prior notice

Preparation

1. After opening all the boxes, read this introduction carefully, check all the packed parts are complete by cross checking all the components against the “Detailed Diagram of Shower Enclosure Components”. Examine for shipping damage. If the unit has been damaged or has a finishing defect, please contact your local distributor within 3 business days. Please note that **Bath Authority™ / DreamLine™ will not replace any damaged product or parts free of charge after 3 business days or if the product has been installed.** Contact your distributor or distributor if you have any questions.
2. **Please note that you should consult your local building codes on questions on installation compliance standards. Building and plumbing codes vary by location, and DreamLine is not responsible for code compliance standards for your project.**
3. Install all of the required plumbing and drainage before securing the shower. **Use a competent and licensed (if required by local code) plumber for all plumbing installation.**
4. Please insure that prior to the installation the floor is leveled and solid and will be able to support the total weight of the unit and its occupant. Also make sure the walls are at right angles. Irregular floor level or improper angle of side walls will result in serious problems for your installation. Please, note that there are some adjustments and drilling might be necessary during the installation process.

Tools Required

Electric drill, Masonry drill bit (D=6mm not provided), Pencil, Phillips screwdriver, Slotted screwdriver, Tape measure, Level with horizontal and vertical indicators.

Note: If glass has silk, print or molded designs put clear side toward inside.

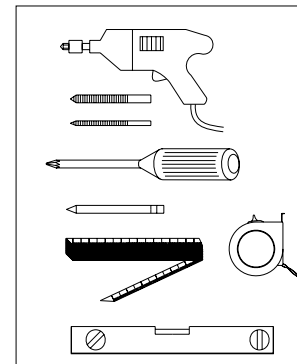
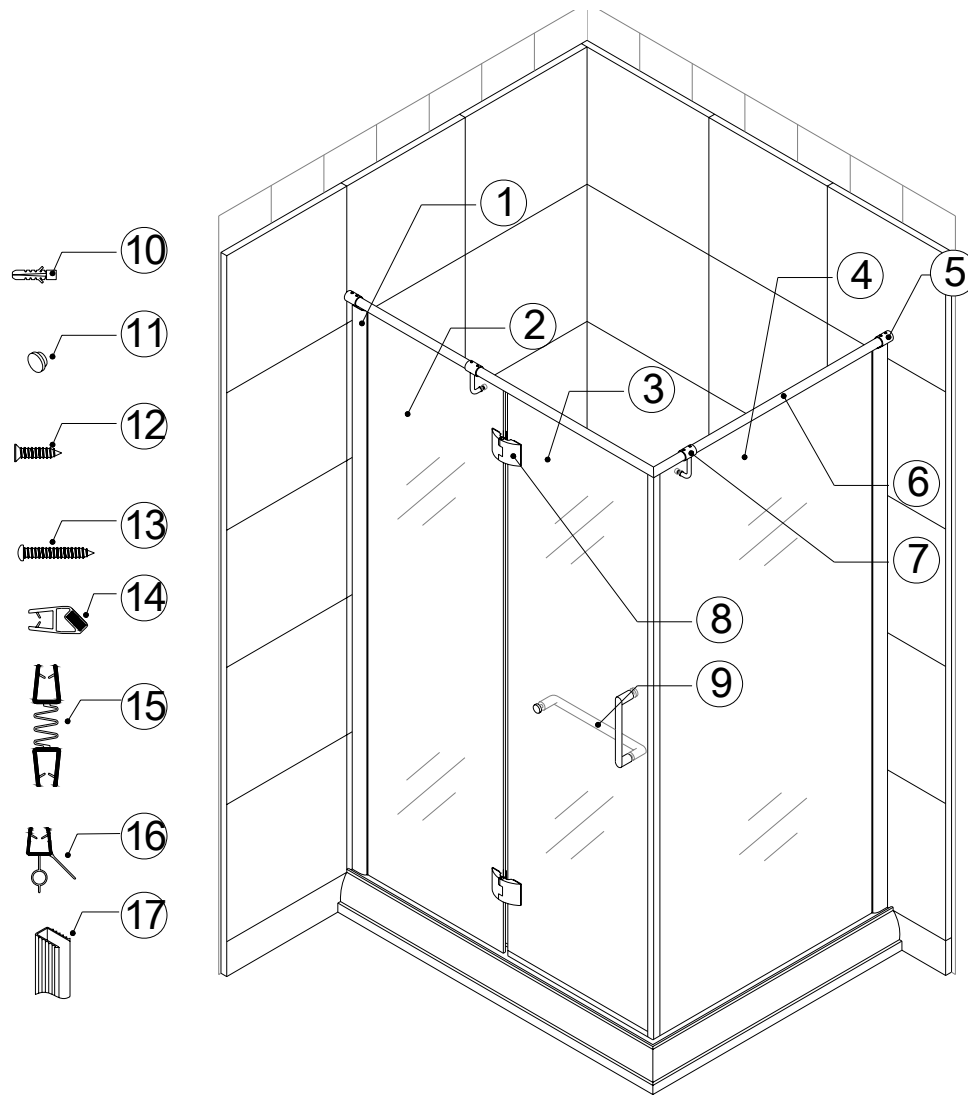


Diagram of Enclosure Components



Packing List

| | | | | | |
|----|-------------------------------------|-------|----|------------------------------------|-------|
| 01 | Wall profile | 2pair | 10 | Wall anchor | 10pcs |
| 02 | Narrow stationary glass panel | 1pcs | 11 | Decorate cover | 10pcs |
| 03 | Glass door | 1pcs | 12 | 4x16 Flat head self-tapping screw | 8pcs |
| 04 | Wide stationary glass panel | 1pcs | 13 | 4x30 Round head self-tapping screw | 10pcs |
| 05 | Support bar wall connecting bracket | 2pcs | 14 | Magnetic strip | 2pcs |
| 06 | 90 degree support bar | 1pcs | 15 | Connected anti-water strip | 1pcs |
| 07 | L-shaped glass support bracket | 2pcs | 16 | Bottom anti-water strip | 1pcs |
| 08 | Hinge | 2pcs | 17 | U-shape seal gasket | 2pcs |
| 09 | Handle | 1set | | | |

Now you have checked that all components are there, you are now ready to start the installation of your Dreamline shower enclosure.

Assemble steps

Install a shower tray according to the Tray installation manual. You should do it before the wonder board and finish wall installation.

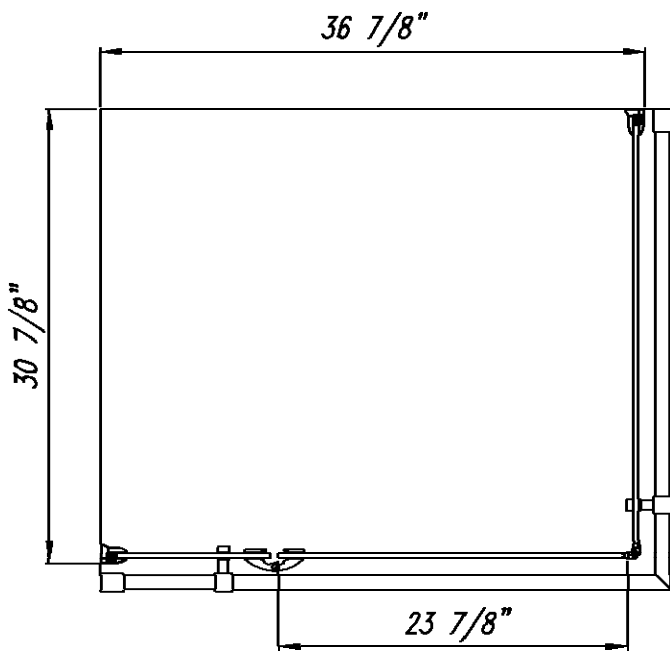
The shower enclosure has to be installed after you finish the wall.

1. Start installation from the shorter wall. Locate the **L-shape wall profile (1)** from the package then place it vertically above the tray 30 7/8" or 34" (refer to Diagram 1) from the corner to the external edge of the profile. Using a level adjust the L-shaped profile upright, then use predrilled into aluminum profile holes to put on marks for drilling. Now drill the holes and insert the **wall anchors (10)** into the hole. Using 4X30 round head self-tapping screw (13) to attach the Wall profile to wall (fig 1).
Be sure that profile is absolutely vertical.
2. Have out the **Narrow Stationary Glass panel (2)**. Locate a small hole on the stationary glass. This hole must be located on the top and toward the door. Place a **U-Shape Seal Gasket (17)** on the long (vertical) side of the glass panel; fit the glass with the gasket into the position (fig 2).
3. Attach the second part of **wall profile (1)** to the **L-shape profile** using **4X16 flat head self-tapping screw (12)** and fasten tight the profile so to secure the position of the stationary glass. Cover the holes with **Decorative cover (11)** (fig 2)
4. Repeat step 1-3 to install another side wall profile and **Wide Stationary Glass Panel (4)**. You need to install profile 34" OR 36 7/8" OR 44 7/8" (refer to Diagram 1) from the corner depending on size of your shower. Check, if stationary glass installed vertical in both directions (fig 3)
5. Refer to Fig 4 to mark the drill holes for the **Support Bar Wall Connecting Brackets (5)**. Make sure the mark is clear and visible and at the exact location as the support bar wall connecting brackets. Drill the holes and install wall anchors in the marks that you created. Tightly install one of the **Support Bar Wall Connecting Brackets (5)** in the wall. Locate the **90 Degree Support Bar (6)**, then locate the two **L-Shaped Glass support brackets (7)**. Face the brackets inward; then slide one L-shaped glass support bracket on each side of the support bar. Next take the support bar assemble, install it into the support bar wall connecting brackets one side at a time, make sure it's a tight fit. When the bar is in place make sure it's level with the glass and the walls. Now fasten the L-shaped glass support brackets to the narrow stationary glass and the wide stationary glass. (fig 5)
6. Install the **Hinges (8)** onto the narrow stationary glass panel and the glass door. Upper edge of the **Glass door** should be on the same level as upper edge of the **Stationary glass**.
You will need assistance in this process. Start off by attaching the hinges to the narrow stationary glass panel. Place the hinge from the outside and screw it in from the inside, do this for the bottom hinge and the top hinge, but start first from the top hinge when you begin to put the door on. Make sure that until both hinges are installed securely, the door does not swing around or lean/bend to any side because that could cause the hinge to snap. After the hinges are installed open and close the door to make sure it's nice and smooth (fig 6). Push on the **Connected anti-water strip (15)** to seal between the glass door and the narrow stationary glass (fig 7).
7. Install the **Handle** to the **Glass door**. Locate the Vertical Handle and the Horizontal Handle (9). The horizontal handle will be on the outside and the vertical handle will be

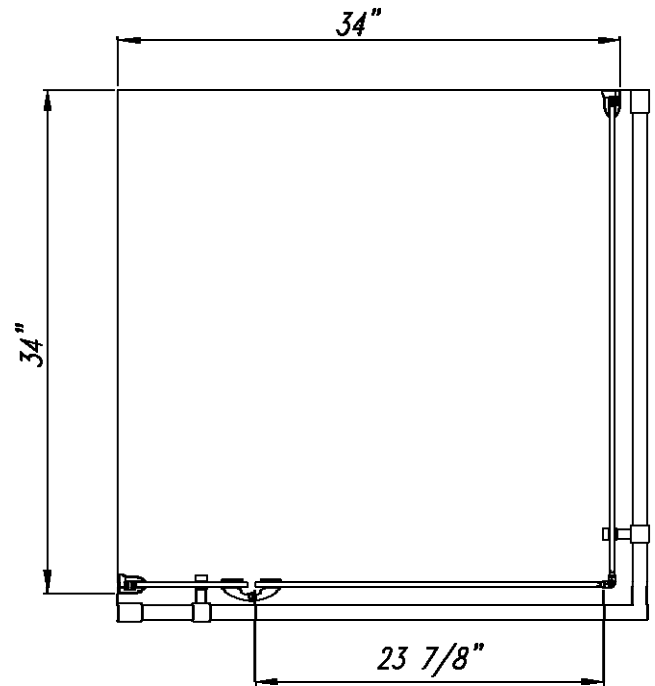
on the inside of the door. Start the installation from the outside which will involve the horizontal handle first. Don't forget to use the rubber gaskets between the glass and washers.

8. Apply silicone sealant along the wall profiles and bottom guide rail (fig 8).

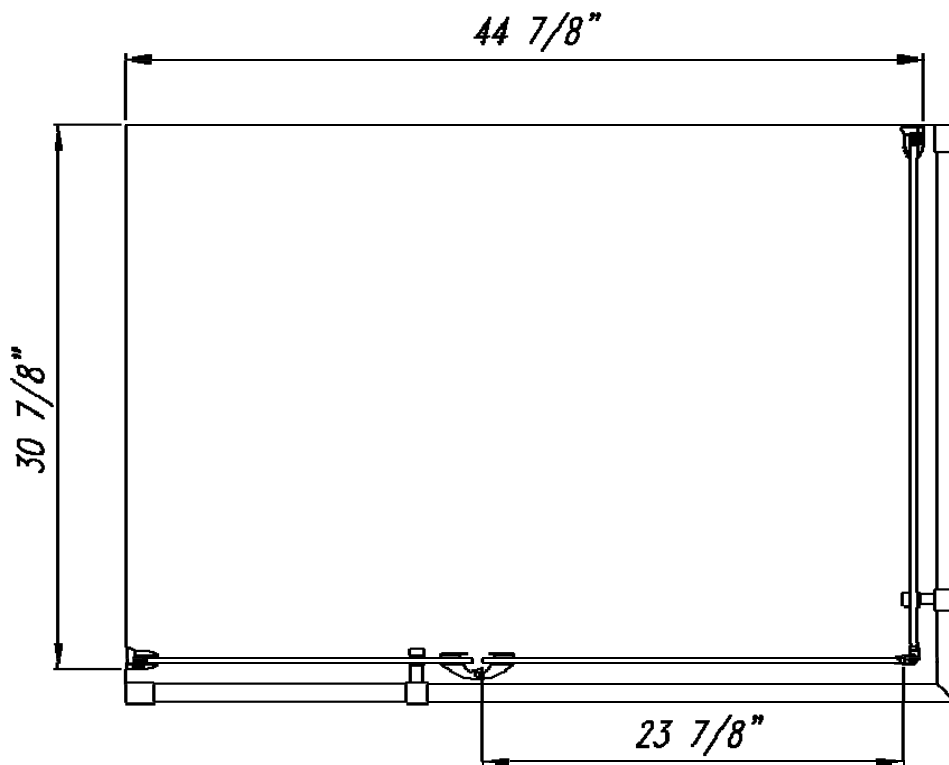
Diagram 1



SHEN-1031378



SHEN-1034348



SHEN-1031458

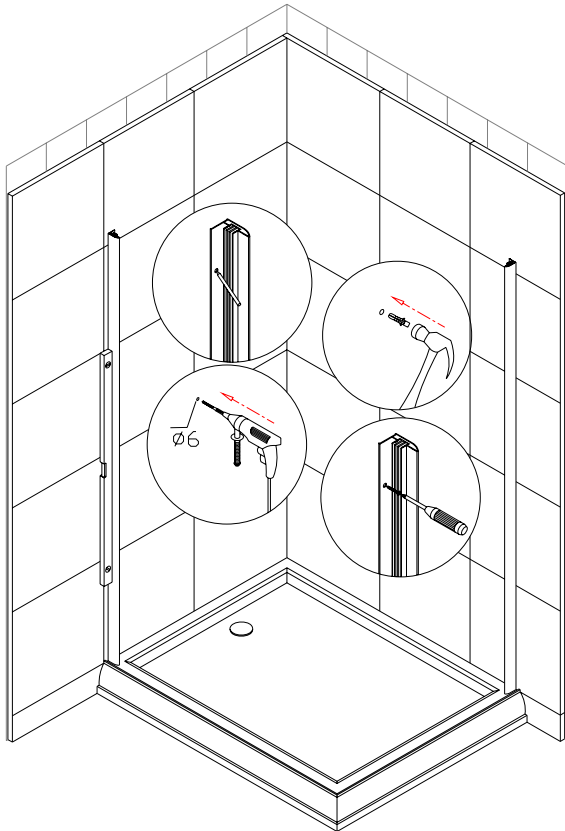


Fig 1

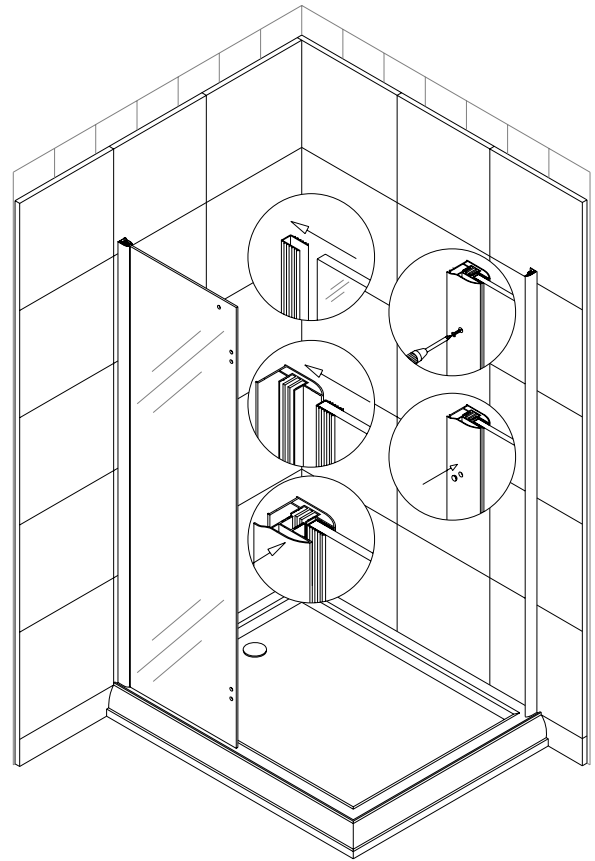


Fig 2

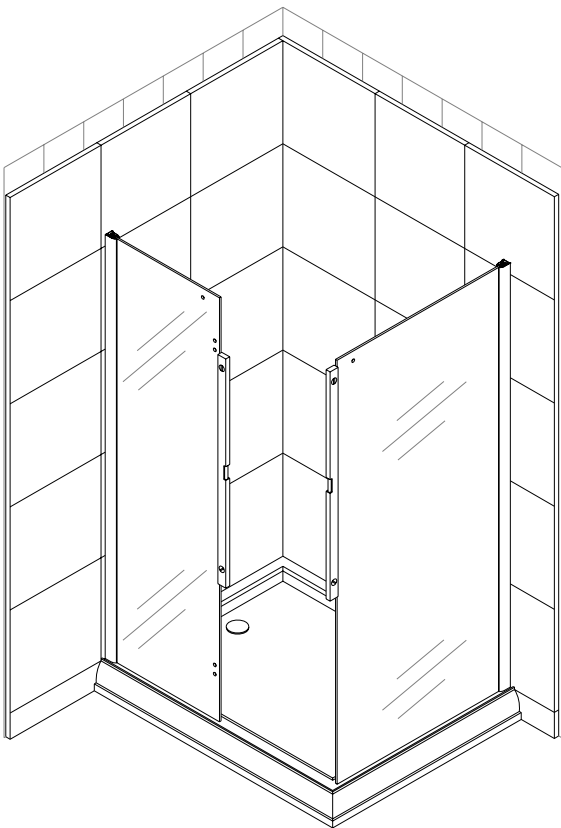


Fig 3

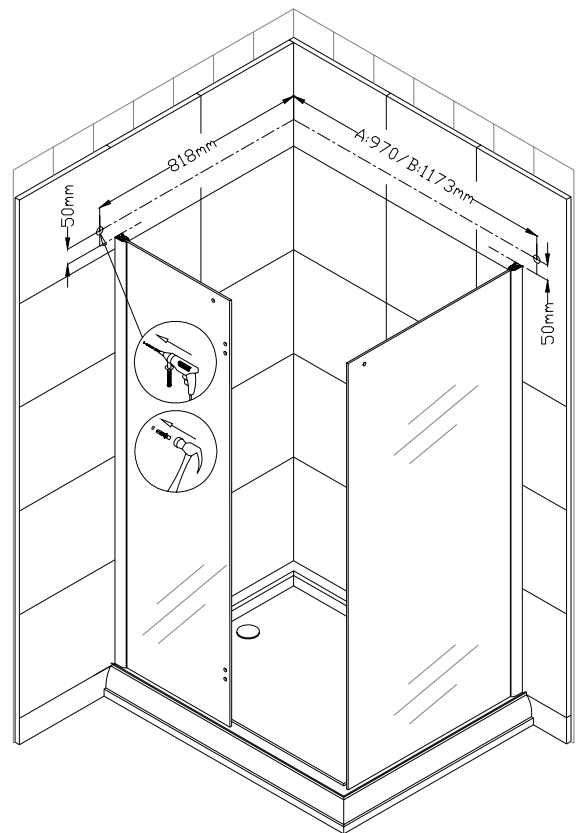


Fig 4

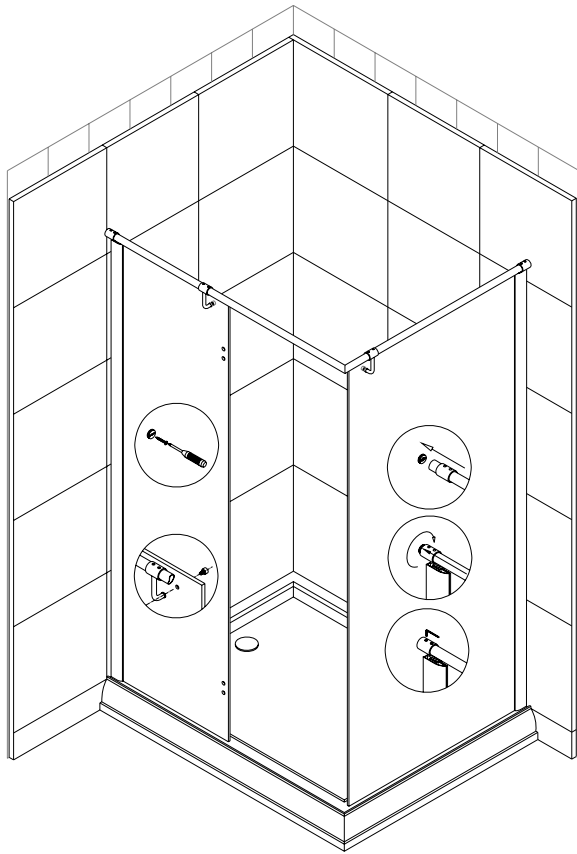


Fig 5

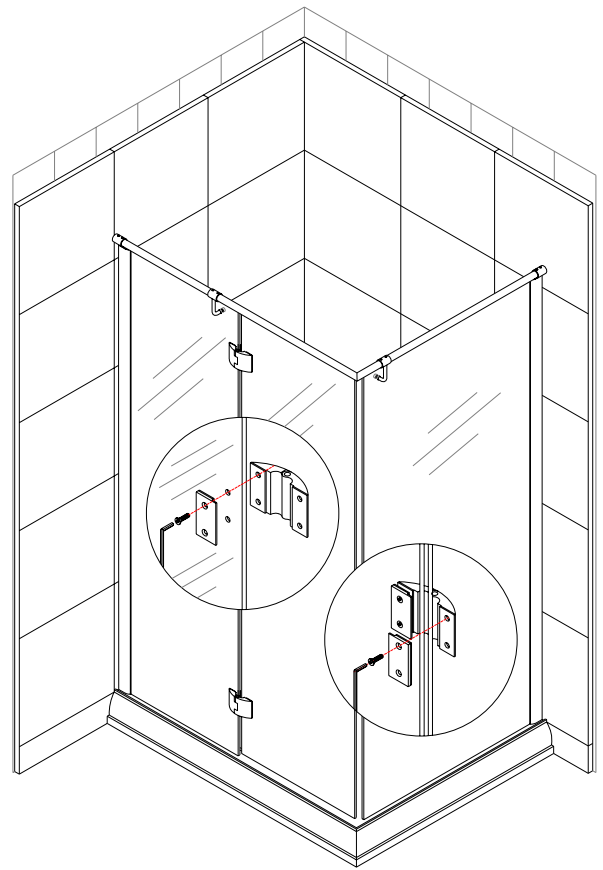


Fig 6

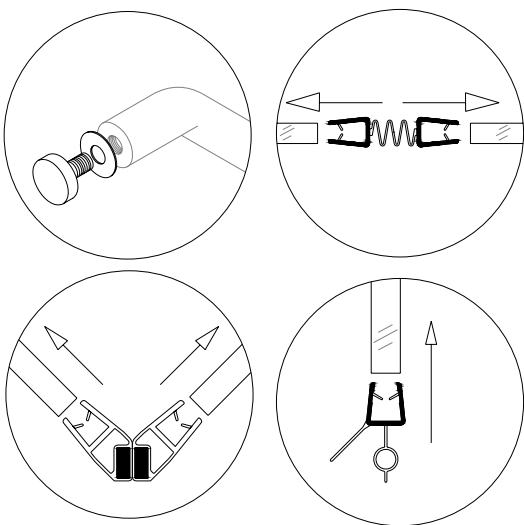


Fig 7

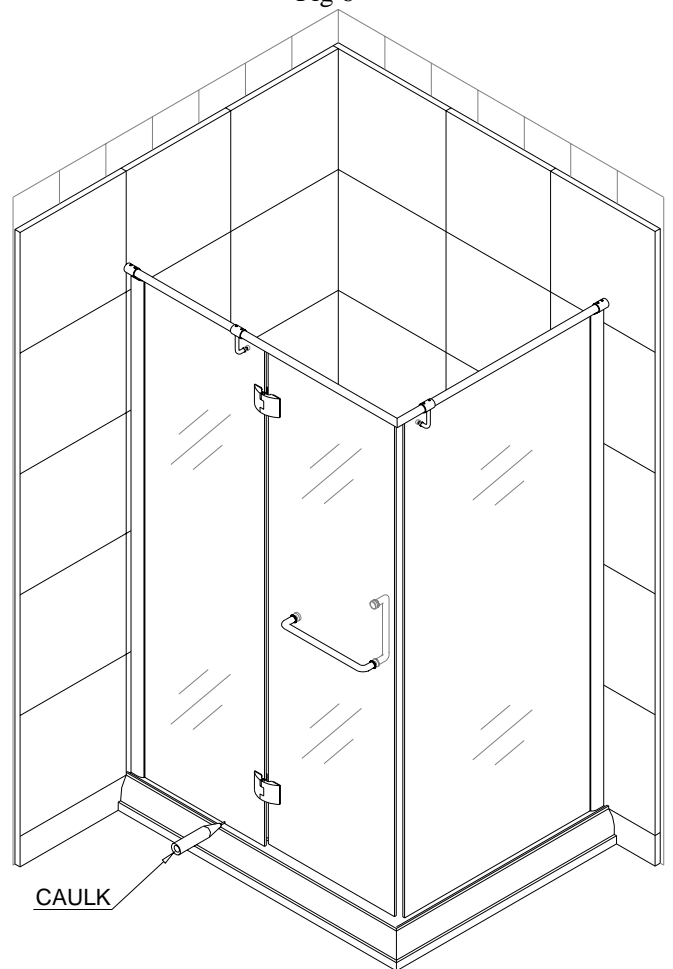


Fig 8

Product Maintenance

1. Tempered glass can be clean with nonabrasive bathroom cleaner or any glass cleaner you use elsewhere in your home. Rinse off any glass cleaner that gets on the aluminum as soon as possible to avoid damage to the anodized surface. Avoid striking it with any sharp or hard objects. Such damage can cause either immediate or delayed breakage of tempered glass.

2. The aluminum in your shower door is durable and resistant to water damage. It is advisable, but not necessary to wipe it with your towel after your shower. Clean it as often as needed to keep the buildup off. Never use any type of abrasive cleaner. Use only a soft damp cloth and nonabrasive bathroom cleaners.

Our product may have changes without prior notice

Bath Authority™ LLC / DreamLine™

Shower Enclosure, Jetted/Steam Shower and Shower Columns

Limited Warranty

CONSUMER RESPONSIBILITIES

Your DreamLine™ Shower Products will remain beautiful for many years if you take care of them. Some of the waterproofing plastic strips and other seals will need to be replaced when they show signs of wear, yellowing, or are not watertight. Refer to the parts list of your manual for all seals. Water conditions in various parts of the country will determine any extra cleaning attention you may have to give your new shower enclosure or jetted shower. DreamLine™ does not recommend the use of harsh abrasive cleansers on any of its products. Harsh cleansers will damage the metal or glass finish on your shower enclosure or jetted shower.

REQUESTING SERVICE

Here's what you need to do if you require service:

1. Contact the dealer who sold and/or installed the product. They should be able to solve any problems you may have.
2. If your dealer or contractor cannot solve the problem, they will contact or supply you with the name of the local DreamLine™ Distributor or a DreamLine™ Direct Technical Specialist
3. If you are unable to obtain warranty service through either your contractor or DreamLine™ distributor, please write us directly at

Bath Authority™ LLC / DreamLine™
909 Louis Drive
Warminster, PA 18974
ATTN: Customer Service Department

4. Include all pertinent information regarding your claim, including a complete description of the product, model numbers, colors, finishes, and the date the product was installed. Include a description of the problem and a photocopy of your invoice and purchase receipt(s) for the products involved. Also please provide information on the name and contact telephone numbers of the contractor and distributor.

Please note that under any circumstances, DreamLine™ products should not be returned to your dealer, distributor or directly to DreamLine™ without a written Return Merchandise Authorization (RMA).

LIMITED ONE-YEAR WARRANTY

This warrantee extends only to the original owner/end-user for personal household use only. For commercial uses, additional limitations may apply.

DreamLine™ warrants acrylic surface against blistering or cracking and chipping resulting from defect in the acrylic surface material when used under normal condition and service for a period of one (1) year from the purchase date.

DreamLine™ warrants mirrors, shower doors, shower massage systems, faucet finishes and fittings to be free from defects in workmanship and materials under normal use and service for a period of one (1) year.

DreamLine™ further warrants the structure of the acrylic shell against loss of water through the fiberglass laminate of the acrylic body as a result of defect in materials and workmanship for a period of five (5) years from the purchase date.

DreamLine™ will, at its election, repair, replace, or make appropriate credit adjustment where DreamLine™ optional inspection discloses any such defects occurring in normal usage within the warrantee periods. **Please note that DreamLine™ is not responsible for any installation or removal costs.**

Improper modification of any enclosure, jetted shower or shower column components may void the warrantee - so please install the product as directed in the manual. This warrantee does not cover any claim arising from abuse, misuse, negligence, accident, improper installation or operations on the part of the purchaser. This warrantee is void if the DreamLine™ product is subject to alterations, or if repairs are attempted by anyone other than an authorized agent of DreamLine™. This warrantee does not extend to any plumbing or components installed by dealers, installers or by any party other than DreamLine™.

Implied warranties, including that of merchantability or fitness for a particular purpose, are expressly limited in duration to the duration of this warranty. DreamLine™ disclaims any liability for special, incidental, or consequential damages.

Some states do not allow limitations on how long an implied warranty lasts or the exclusion or limitation of special, incidental, or consequential damages, so these limitations and exclusions may not apply to you. This warranty gives you specific legal rights. You may also have other rights which vary from state to state. This limited warranty provides specific legal rights as they apply within the USA, and other rights may be available, but may vary from country to country.

This is our exclusive written warranty for DreamLine™ Shower Enclosure, Jetted/Steam Shower and Shower Column purchases made after May 2004. DreamLine™ reserves the right to modify this warranty at any time, and the consumer understands that such modification will not alter the warranty conditions applicable at the time of the sale of the product.