

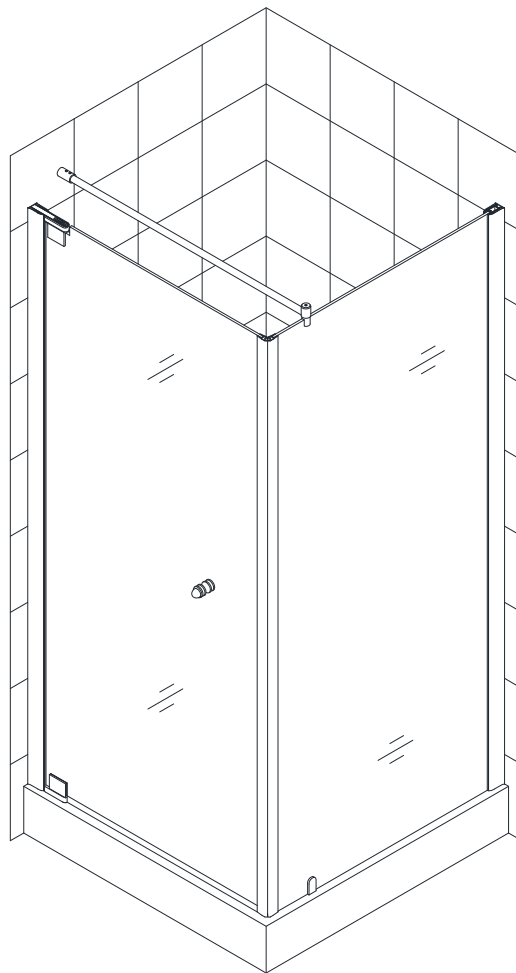


TETRA

SHOWER ENCLOSURE INSTALLATION INSTRUCTIONS

IMPORTANT

DreamLine™ reserves the right to alter, modify or redesign products at any time without prior notice. For the latest up-to-date technical drawings, manuals or any other details please refer to the support.BathAuthority.com web page.



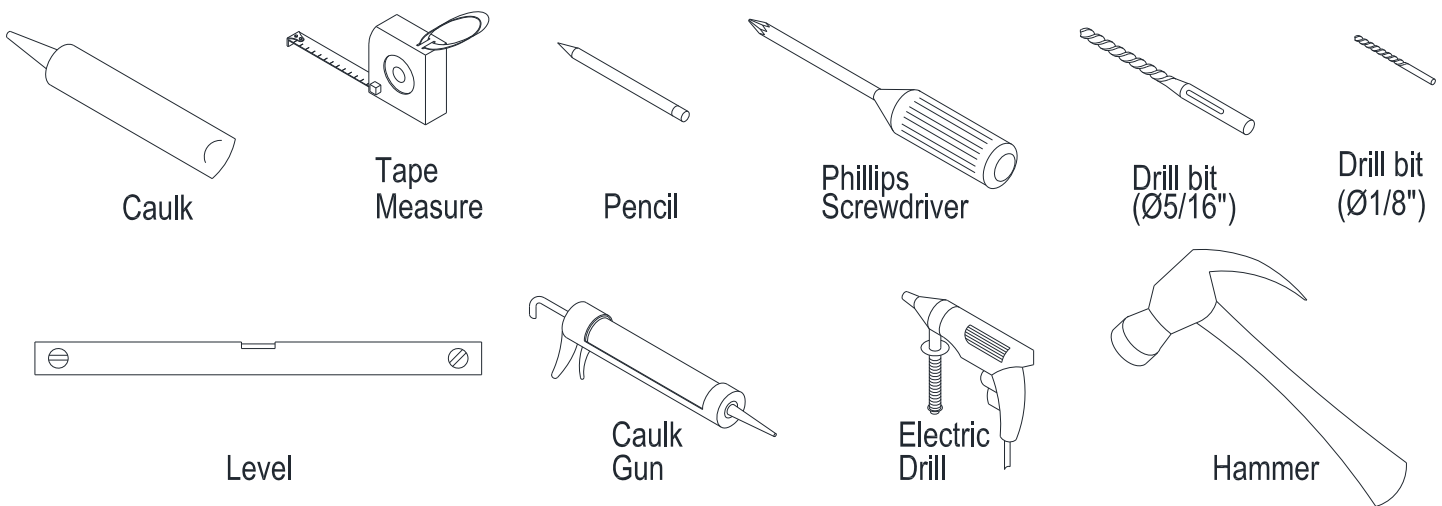
Please carefully read the instructions before installing. If you have any questions regarding installation, please call our technical support specialists Monday through Friday 9:00 AM – 5:00 PM EST at 1-866-731-8378, ext. 3 or e-mail our technical support group at support@BathAuthority.com.

For more information on [DreamLine™ Shower Enclosure](http://www.BathAuthority.com) please visit www.BathAuthority.com

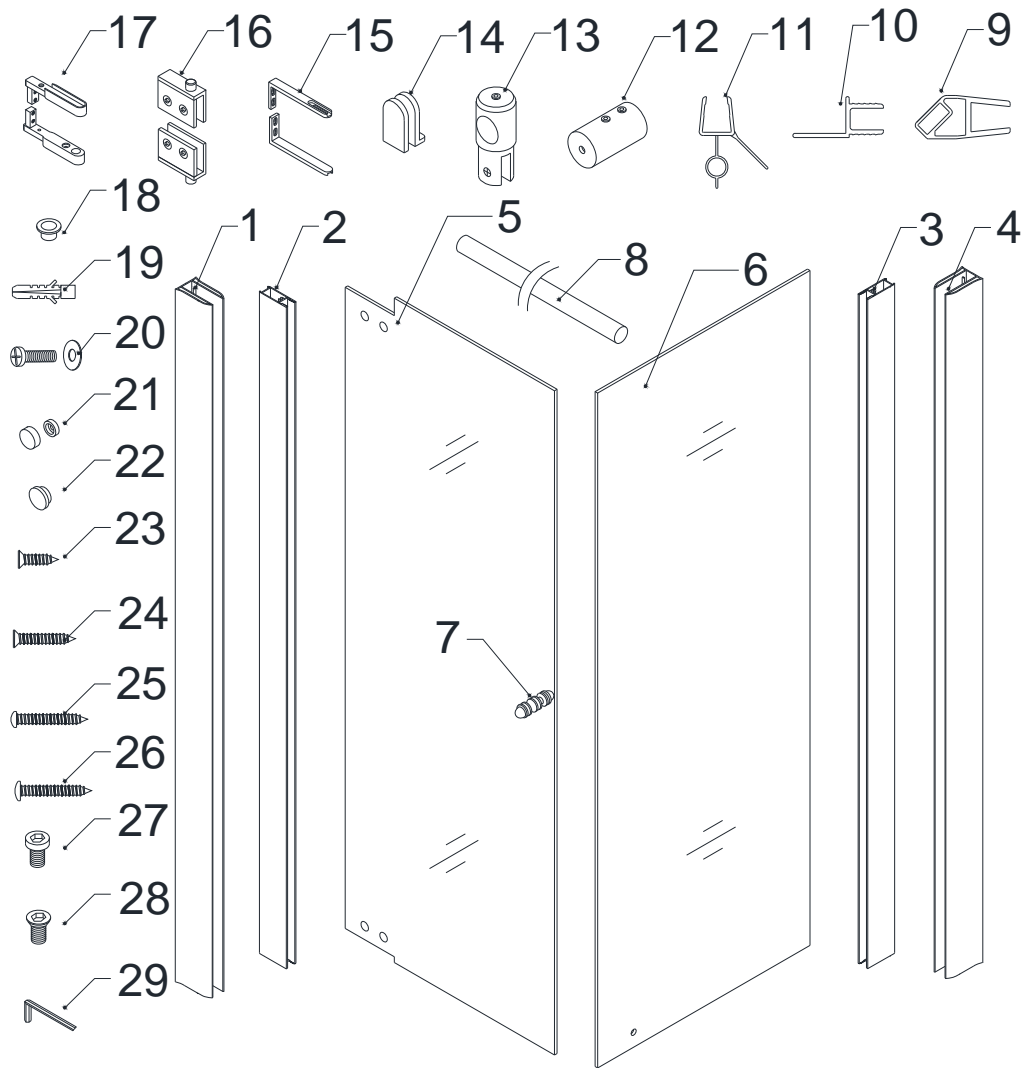
Preparation

1. After opening all boxes and packages, read this introduction carefully. Check that all of the needed parts are included in the package, by marking all the components on the "Detailed Diagram of Shower Enclosure Components". Examine boxes and packages for shipping damage. If the unit has been damaged, has a finishing defect, or has missing parts, please contact our customer support department within 3 business days of the delivery date. Please note that **DreamLine™ will not replace any damaged products or missing parts free of charge after 3 business days or if the product has been installed.** Feel free to contact DreamLine™ if you have any questions.
2. **Please note that you should consult your local building codes with questions on installation compliance standards. Building and plumbing codes may vary by location, and DreamLine is not responsible for code compliance standards for your project.**
3. If this unit is going to be installed in a new construction, please, install all of the required plumbing and drainage before installing the shower. **Use a competent and licensed (if required by local code) plumber for all plumbing installation**
4. Please insure that prior to the installation the installation surface is leveled and solid and will be able to support the total weight of the unit. Also make sure the walls are at right angles. While some adjustment in leveling of the door is possible, irregular installation surface level or improper angle of side walls will result in serious problems for your installation. Please, note that some adjustments and drilling might be necessary during the installation process.

Tools Required



Detailed Diagrams of Shower Door Components

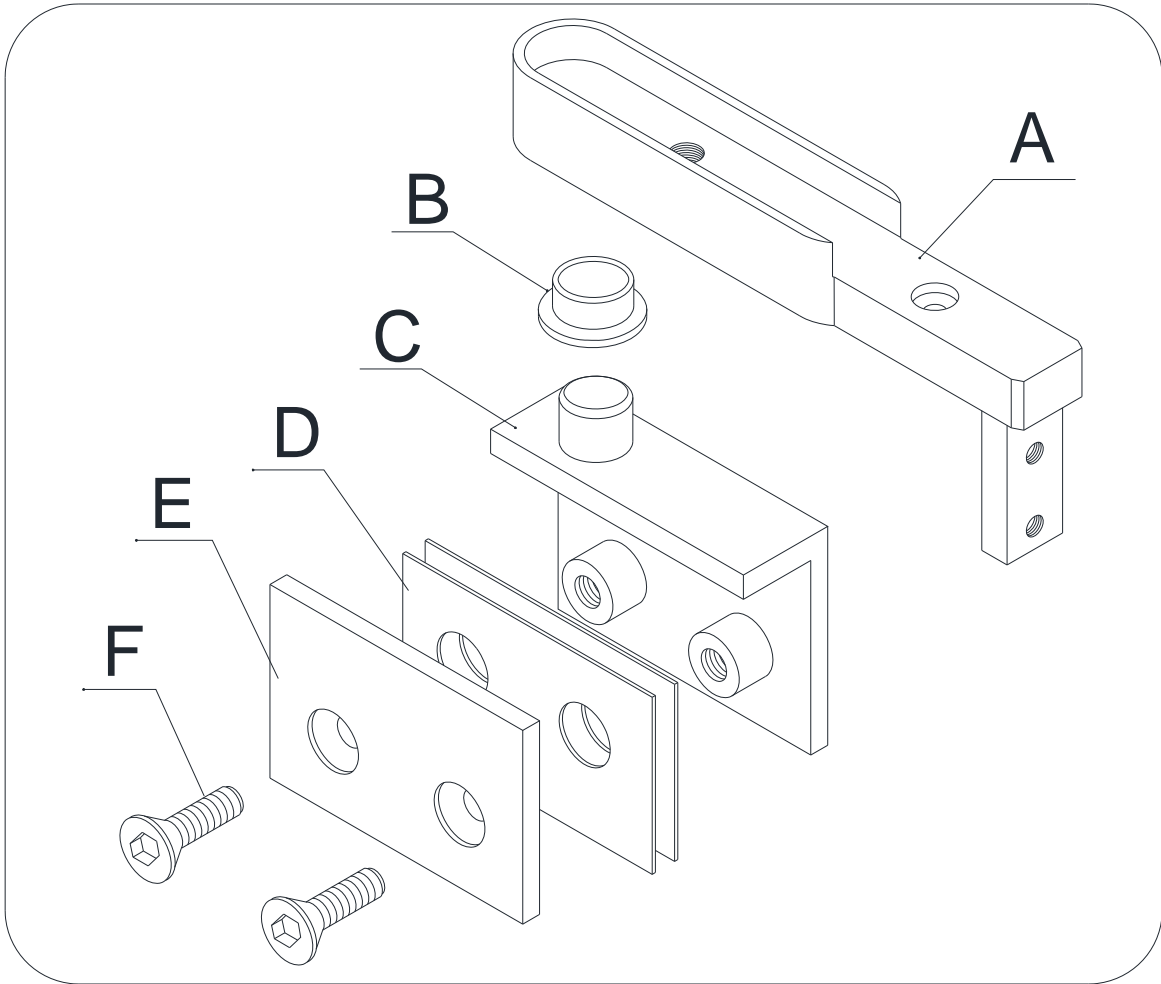


Packing List

01	Wall profile for glass door	1pc	16	Pivot assembly (upper and bottom)	1set
02	Glass profile for glass door	1pc	17	Pivot bracket (upper and bottom)	2pcs
03	Glass profile	1pc	18	Washer	2pcs
04	Wall profile	1pc	19	Wall Anchor	13pcs
05	Glass door	1pc	20	Screw M4x16 (with washer)	4pcs
06	Return glass	1pc	21	Decorative cover	1pc
07	Handle	1set	22	Decorative plug	6pcs
08	Support bar	1pc	23	Flat head screw ST4.2x16	6pcs
09	Magnetic strip	1pair	24	Flat head screw ST4.2x25	3pcs
10	Anti-water strip	1pc	25	Round head screw ST4.2x25	1pc
11	Bottom anti-water strip	1pc	26	Round head screw ST4.2x30	13pcs
12	Support Bar Wall bracket	1pc	27	Round head socket bolt M6x12	1pc
13	Support Bar Glass bracket	1pc	28	Flat head socket bolt M6x12	1pc
14	Bottom bracket	1pc	29	Allen key 4mm, 5mm each	1 set
15	Pivot retainer (upper and bottom)	2pcs	30		

NOTE: Unpack your unit carefully and inspect it. Lay it out and identify all parts using the detailed diagram and packing list in your manual as a reference. Before discarding the carton, check for small hardware bags that tend to fall to the bottom of the box. If any parts are damaged or missing, please contact DreamLine™ for replacement.

Detailed Diagrams of Pivot Assembly



Pivot Assembly Parts List

A	Pivot bracket	1pc	D	Spacer	2pcs
B	Washer	1pc	E	Back plate	1pc
C	Pivot body	1pc	F	Bolt	2pcs

Shower Enclosure Installation

1. Place the **Wall profile for glass door (01)** on the shower base or the threshold vertically against the finished wall. Adjust the **Wall profile for glass door** vertically using a level.

See Fig. 1 for details.

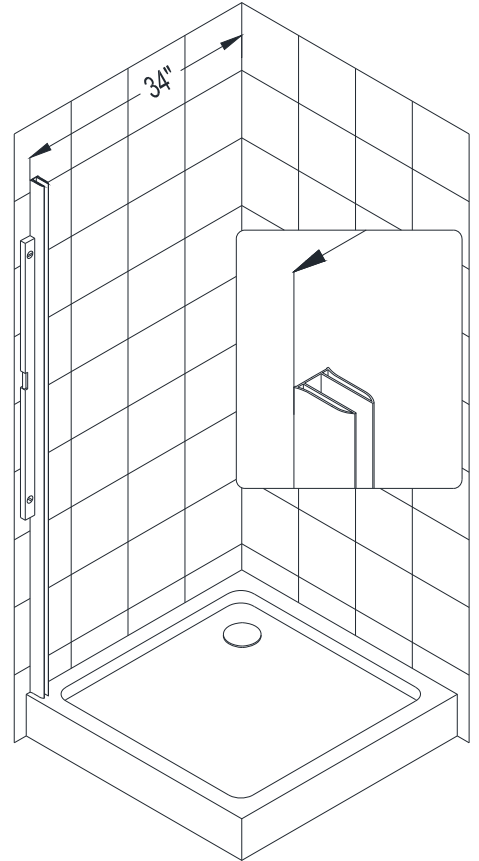


Fig. 1

2. Mark the drill holes on the wall through the predrilled holes in the **Wall profile for glass door (01)**. Now drill holes in the wall and insert the **Wall anchor (19)**.

See Fig. 2 for details.

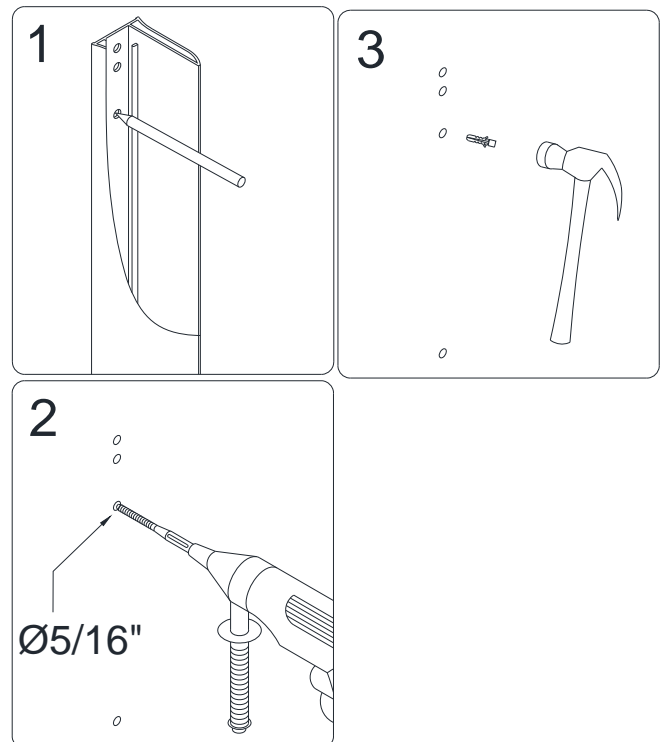


Fig. 2

3. Push the **Pivot retainers (15)** into both ends of the **Wall profile for glass door (01)**.

See Fig. 3 for details.

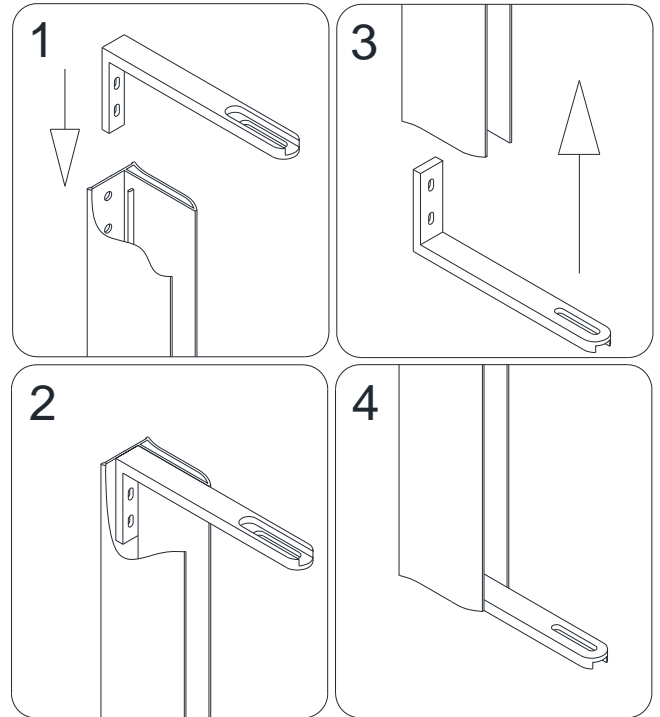


Fig. 3

4. Run a silicone bead along the holes on the wall.

Attach the **Wall profile for glass door (01)** and the **Pivot retainer (15)** to the wall using **Round head screws ST4.2×30 (26)**.

See Fig. 4 for details.

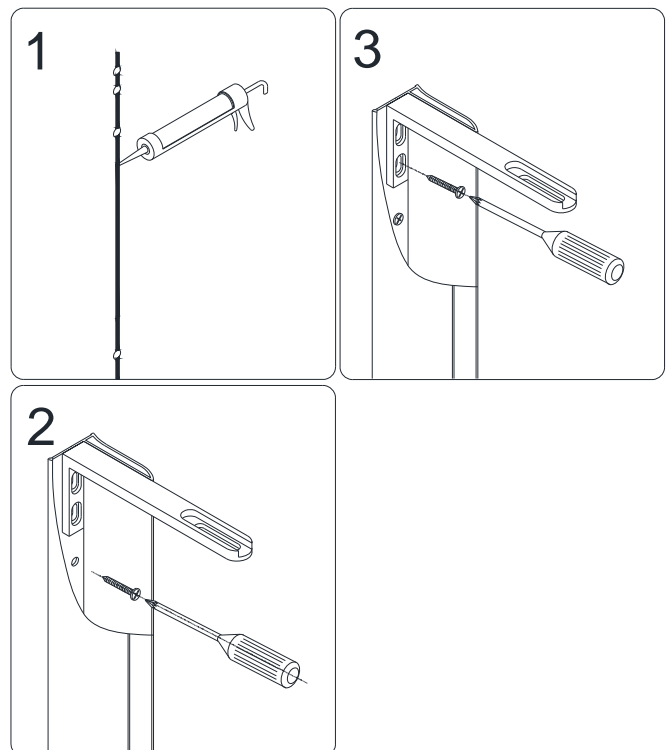


Fig. 4

- Place the **Wall profile (04)** on the opposite corner of the shower base or the threshold vertically against the finished wall.
Adjust the **Wall profile** vertically using a level.

See Fig. 5 for details.

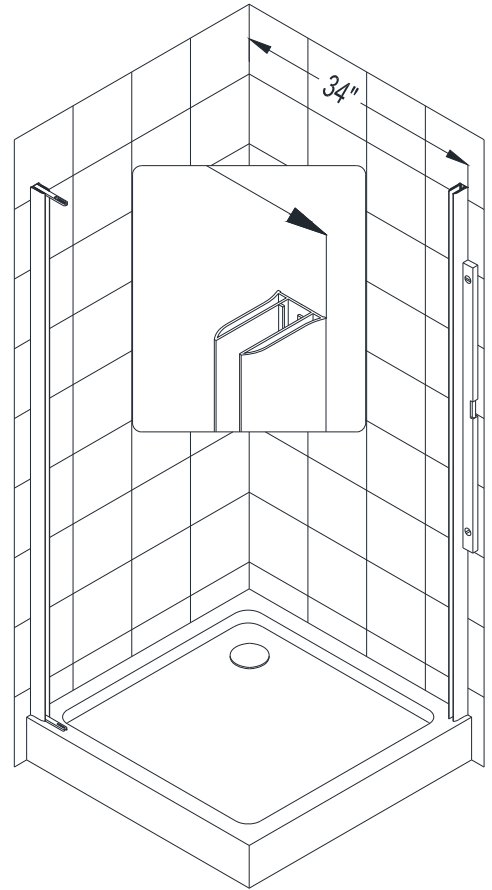


Fig. 5

- Mark the drill holes on the wall through the predrilled holes in the **Wall profile (04)**.
Now drill holes in the wall and insert the **Wall anchor (19)**.
Run a silicone bead along the holes on the wall.
Attach the **Wall profile** to the wall using **Round head screws ST4.2×30 (26)**.

See Fig. 6 for details.

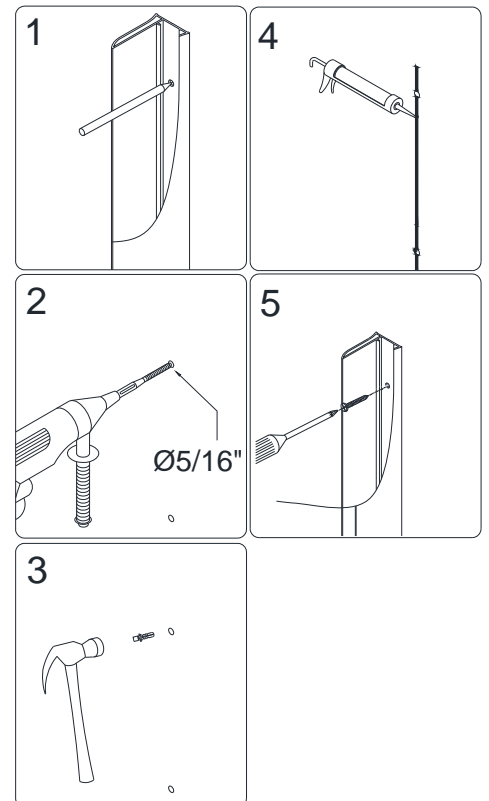


Fig. 6

7. Attach the **Pivot brackets (17)** to the top and the bottom ends of the **Glass profile for glass door (02)** with the **Flat head screws ST4.2×25 (24)** and **Screws M4×16 (20)**.

See Fig. 7 for details.

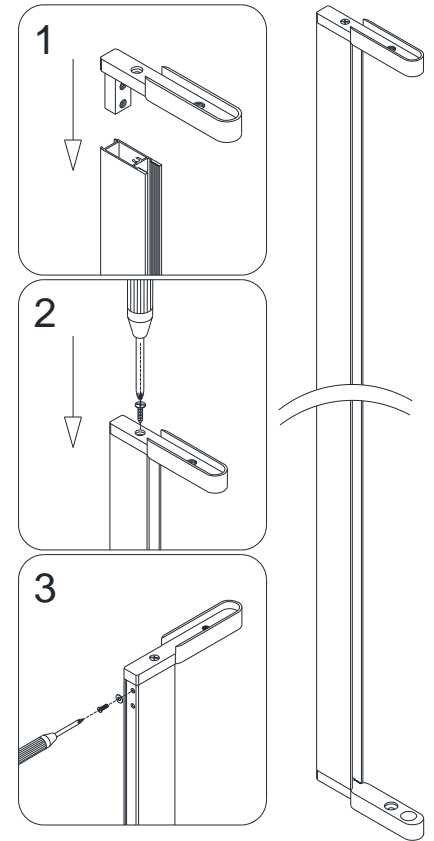


Fig. 7

NOTICE:

The Glass door has 2 cuts for the Pivot assemblies. The deeper cut must be on the top.

8. Remove the **Bolts (F)** and **Back plates (E)** from the upper and bottom **Pivot bodies (C)**.

Place the **Glass door (05)** to the **Pivot assemblies**, attach **Back plates** to its position and fasten tight the **Bolts**.

Make sure the clear rubber **Spacers (D)** are in between the glass and the metal parts. Secure tight the **Glass door** to the **Pivot assemblies**.

See Fig. 8 for details.

NOTE: For this Step please refer to Pivot Assembly Diagram and Parts List

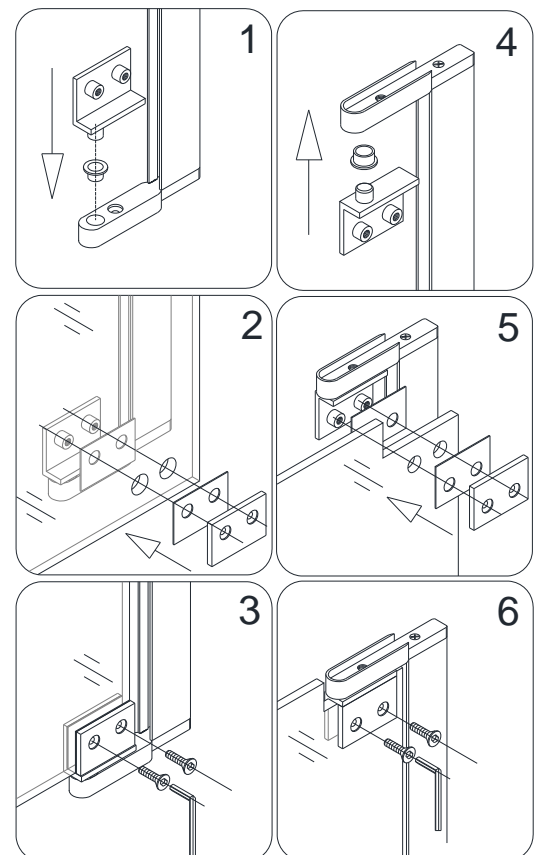


Fig. 8

9. Mount the **Handle (07)** onto the **Glass door (05)**.

See Fig. 9 for details.

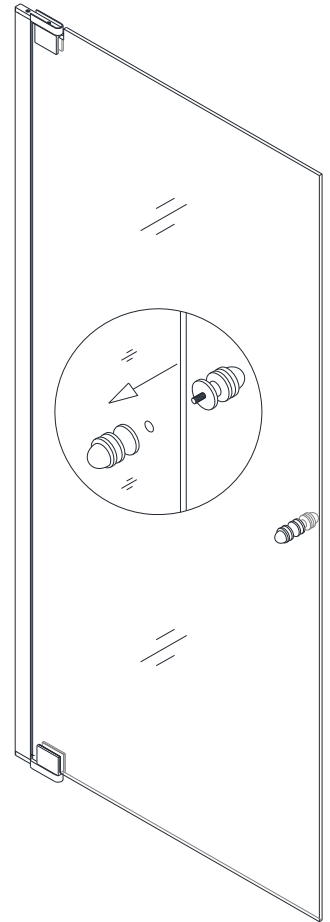


Fig. 9

10. Slide the assembled **Glass door (05)** into the groove of the **Wall profile for glass door (01)** and secure the upper **Pivot retainer (15)** with the upper **Pivot bracket (17)** using **Round head socket bolt M6×12 (27)**.

See Fig. 10 and Fig. 11 for details.

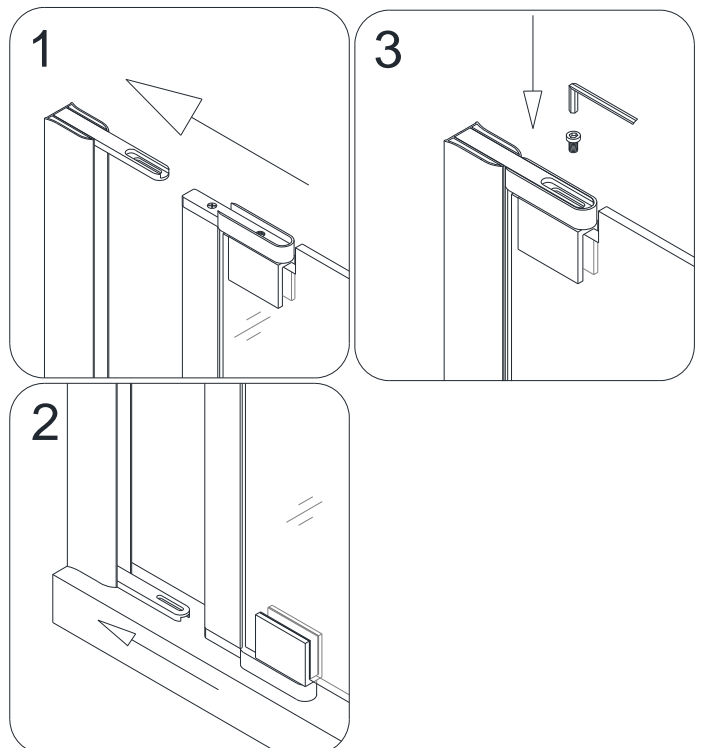


Fig. 10

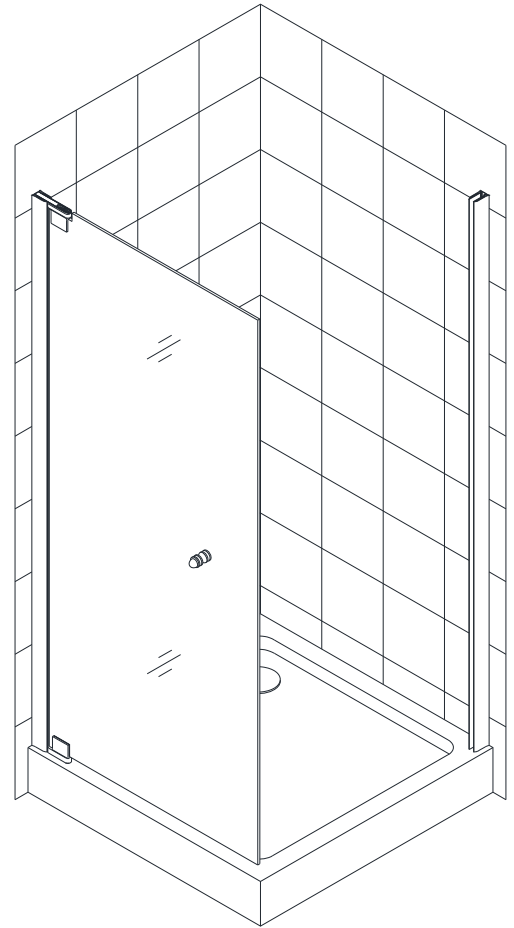


Fig. 11

11. Apply clear silicone along the inner channel of the **Glass profile (03)** and push the **Return glass (06)** inside the channel.

NOTE: If you have difficulty sliding the **Glass profile** over the **Return glass**, you can slightly tap on the **Glass profile** with a rubber mallet and a piece of wood. Please do not strike directly on the profile.

Slide the **Return glass** with the **Glass profile** into the groove of the **Wall profile (04)**.

See Fig. 12 and Fig. 13 for details.

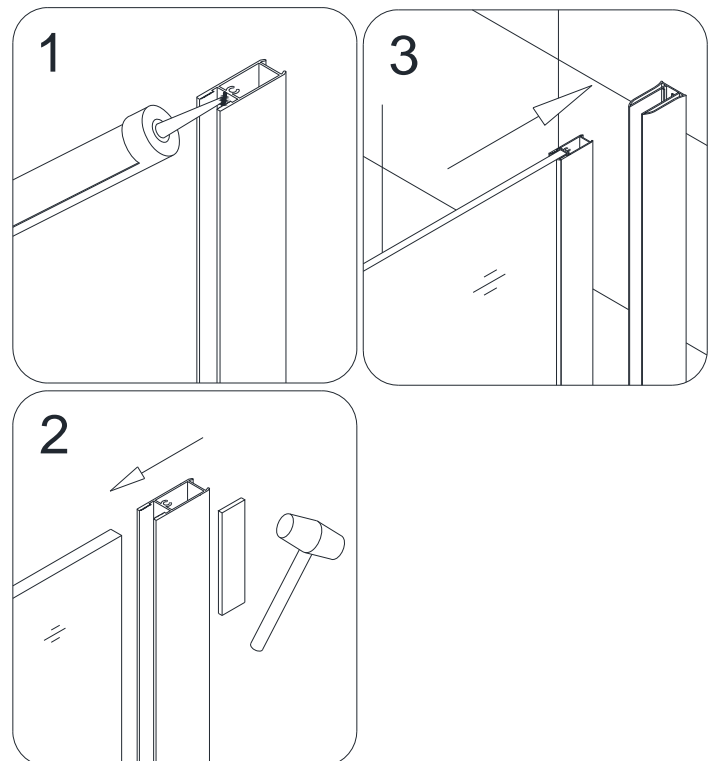


Fig. 12

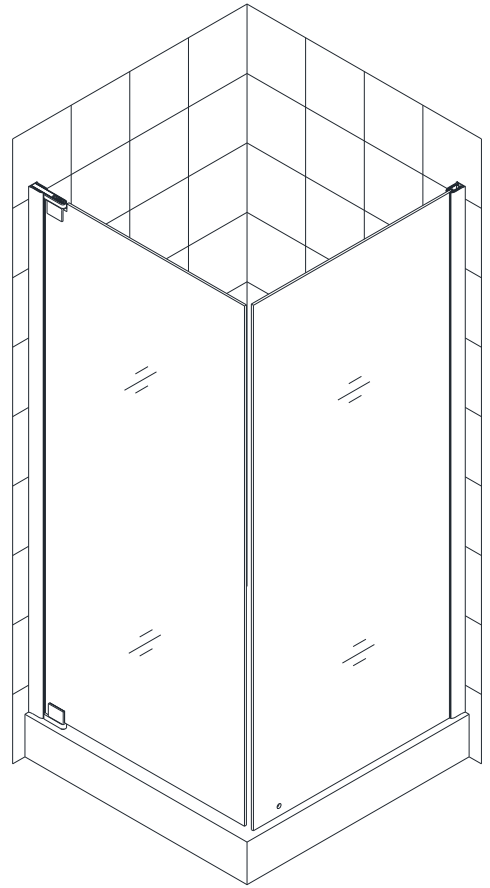


Fig. 13

12. Attach the **Magnetic strips (09)** onto the vertical edges of the **Glass door (05)** and the **Return glass (06)**.

Attach the **Bottom anti-water strip (11)** onto the glass door.

Open the door and push the **Anti-water strip (10)** into the vertical groove of the **Glass profile for glass door (02)**.

(You can cut the strips to size by using a knife).

See Fig. 14 for details.

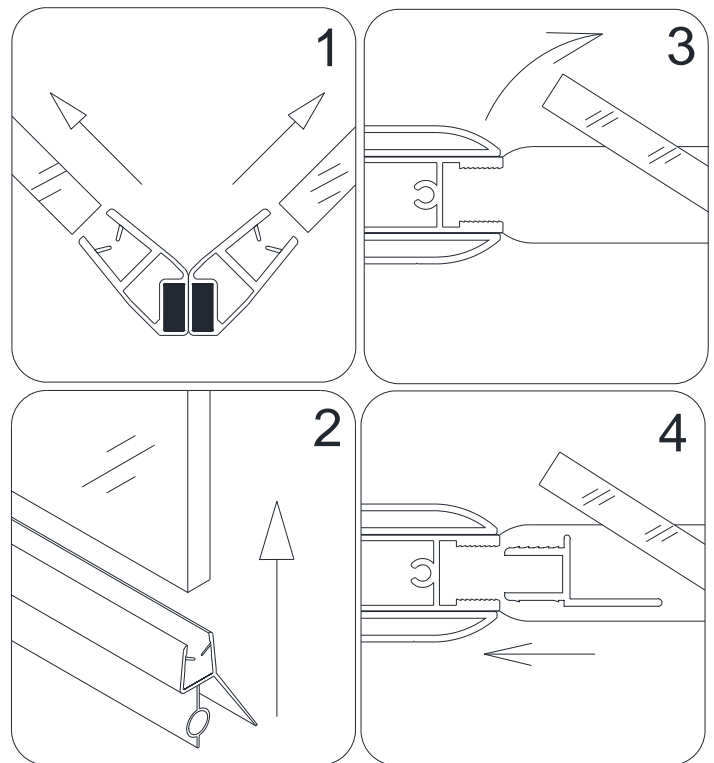


Fig. 14

13. Close the **Glass door (05)** and do final adjustments to the unit.
 Make sure the **Magnetic strips (09)** tightly connected along the entire length.
 Adjust the unit by pulling out the **Glass profiles (02)** and **(03)** if it necessary and tighten in place with the **Socket head screw M6×12 (27)**.

See Fig. 15 for details.

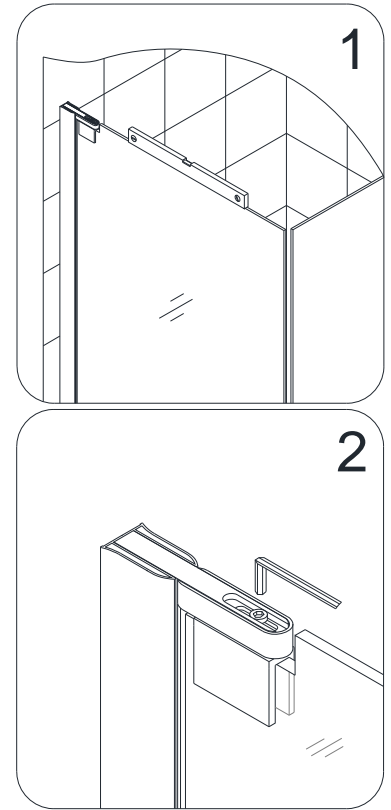


Fig. 15

14. Drill the holes in the **Glass profiles (02)** and **(03)** through predrilled holes in the **Wall profiles (01)** and **(04)** using **Ø1/8"** drill bit.

NOTE: You only need to drill through the first layer of the **Glass Profile**.

Use **Flat head screws ST4.2×16 (23)** to secure the **Glass profiles** inside of the **Wall profiles**. Cover the exposed screw holes with **Decorative plug (22)**.

See Fig. 16 for details.

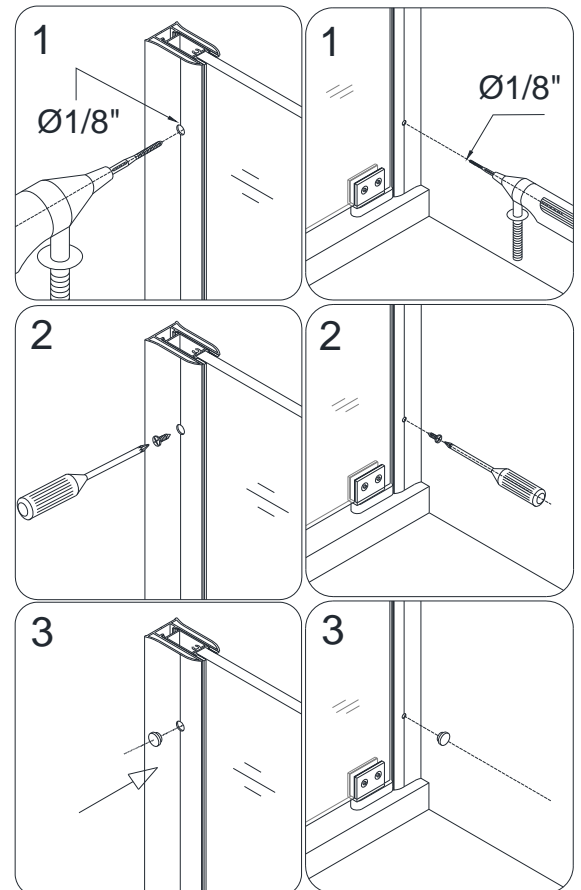


Fig. 16

15. Close the hole in the bottom **Pivot bracket (17)** with **Flat head socket bolt M6×12 (28)** or you can attach the **Pivot bracket** to the Shower base or threshold using **Flat head screw ST4.2×25 (24)**.

Apply silicone sealant over the **Screw head (24)** or **(28)** to prevent leakage.

See Fig. 17 for details.

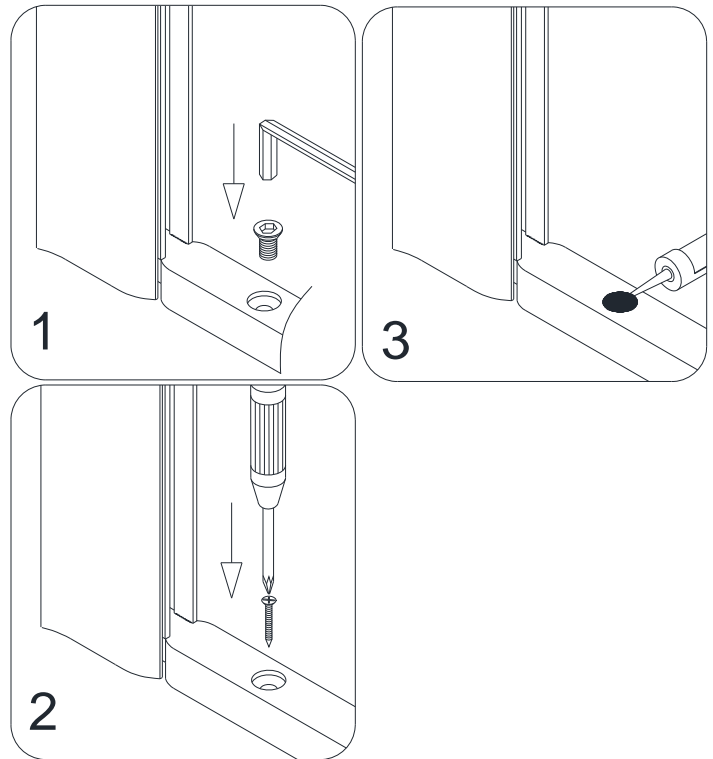


Fig. 17

16. Install the **Bottom Bracket (14)** onto the **Return glass (06)** and drill the hole in the Shower base or threshold using **Ø 1/8"** drill bit.

Use **Round head screws ST4.2×25 (25)** to attach the **Bracket** to the shower base or the threshold.

Cover the screw location with **Decorative cover (21)**.

See Fig. 18 for details.

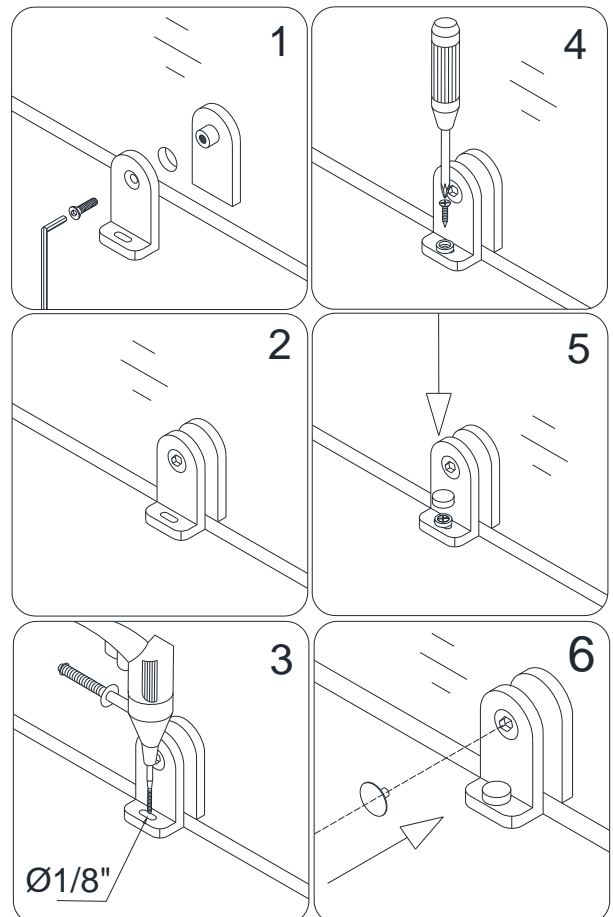


Fig. 18

17. Attach the **Support bar wall bracket (12)** and the **Support bar glass bracket (13)** to the **Support bar (08)**.

Place the **Support bar glass bracket** on the **Return glass (06)** with the **Support bar wall bracket** pointing to the wall.

Adjust the position of the **Support bar wall bracket** on the wall to ensure that the **Support bar** is leveled and parallel to the **Glass door (05)**. Outline the position of the **Support bar wall bracket** on the wall, mark the screw location and drill the hole using $\text{Ø } 5/16''$ drill bit.

See Fig. 19 for details.

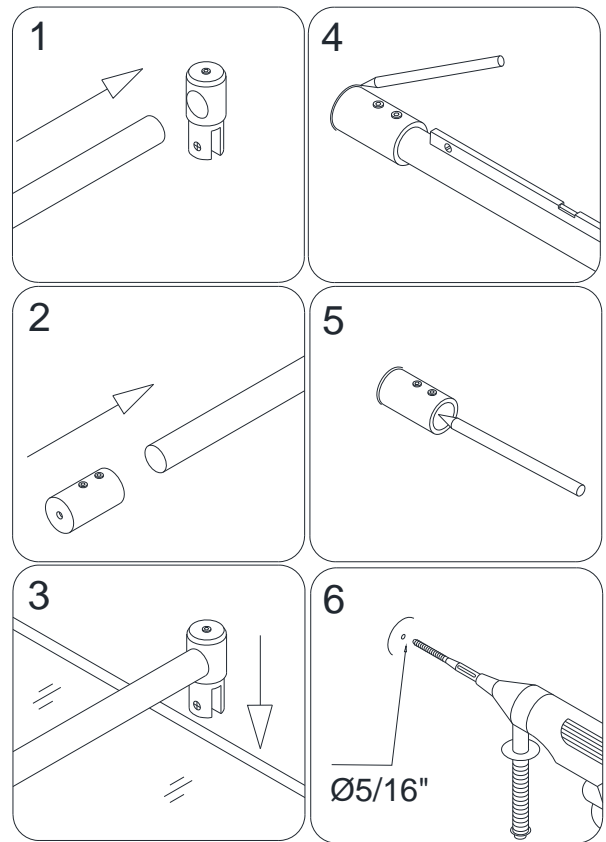


Fig. 19

18. Insert the **Wall anchor (19)** into the hole and attach the **Support bar wall bracket (12)** to the wall using the **Screw ST4.2×30 (26)**.

Insert the end of the **Support bar (08)** into the **Support bar wall bracket** and attach the other end to the **Support bar glass bracket (13)**.

Tighten up the set-screw on the glass bracket.

NOTE: Do not forget to put the spacers between the glass and the metal

Gently push the **Return glass (06)** from outside and check if the **Glass door (05)** is closing tightly and then tighten up the holding set-screws on the **Support bar wall bracket**.

See Fig. 20 for details.

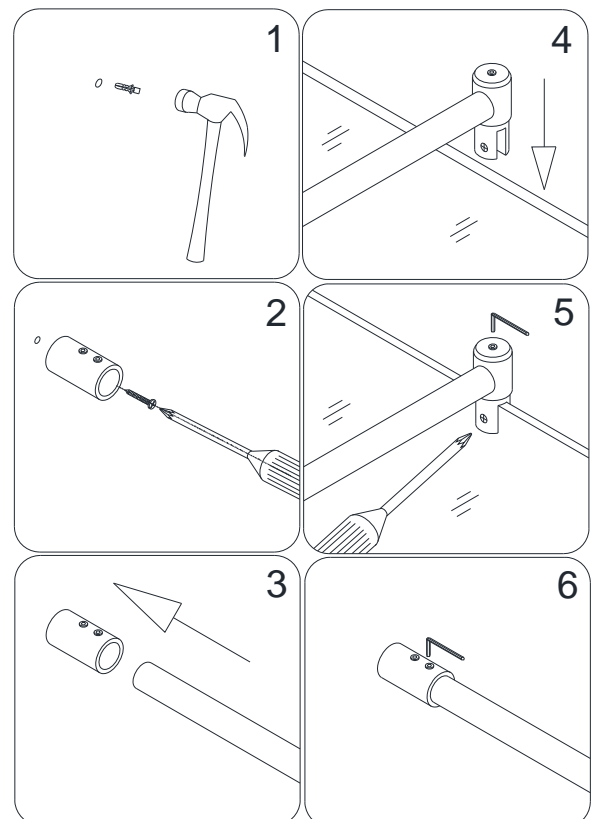


Fig. 20

19. Apply silicone sealant between the tray or threshold, the return glass and the accessory.
Also, apply silicone between the wall and the wall profiles.

See Fig. 21 for details.

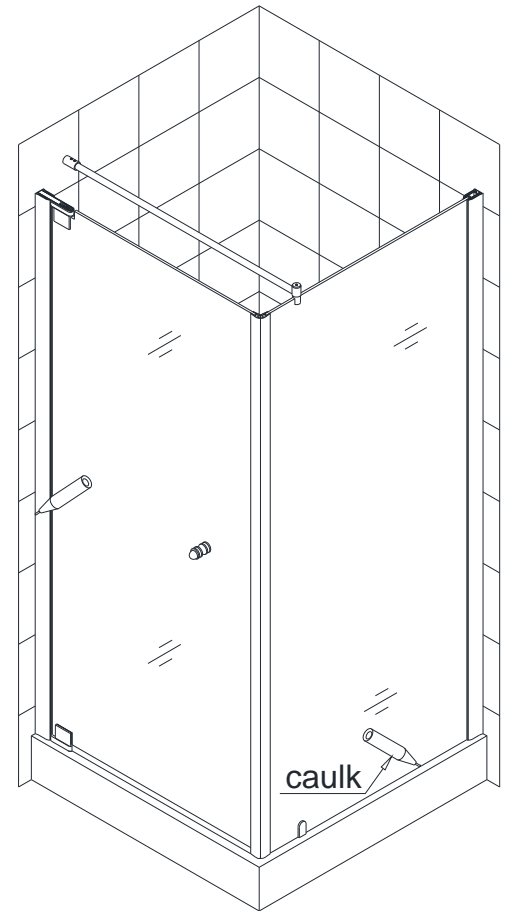


Fig. 21

Maintenance

To insure long lasting life for your acrylic back walls, wipe them off after each use with a soft cloth. To clean the acrylic back walls use non-abrasive sprays or cream based cleaners. Never use abrasive cleansers, metal brushes or scrapers that could scratch or dull the surface.

To insure long lasting life for your glass shower products, wipe them off after each use with a soft cloth. Rinse and wipe of the glass using either soft cloth or squeegee to prevent soap buildup. Never use abrasive cleaners and cleaning products that contain scoring agent because this may scratch the surface. Never use bristle brushes or abrasive sponges.

To assure a long lasting finish wipe off the metal parts after each use with a soft cloth. Do not use abrasive cleaners or cleaning products containing ammonia, bleach or acid. If accidentally used, rinse the surface as soon as possible to prevent finish peeling or corrosion. After cleaning the shiny finishes, rinse thoroughly and wipe dry with soft cloth. Clean stainless steel surfaces at least once a week. When applying stainless steel cleaner or polish, work with (not across) the grain. Never use abrasive sponge or cloth, steel wool or wired brushes.

This is Bath Authority LLC's ("DreamLine") exclusive written warranty effective April 1, 2011

This warranty extends only to the original owner/end-user for household use only and is not transferable to a subsequent owner. This warranty applies only to DreamLine™ products purchased from an authorized dealer and installed in United States or Canada. Proof of purchase (original sales receipt) must be provided with all warranty claims. **In no event shall the liability of DreamLine™ exceed the purchase price of the unit.**

If DreamLine™ shower doors, shower enclosures and shower bases are used commercially, DreamLine™ warrants such products to be free from defects in material and workmanship for one (1) year from initial date of purchase from an authorized dealer, with all other terms of this warranty applying except duration. If DreamLine™ vanities, vessel sinks and shower columns are used commercially, DreamLine™ warrants such products to be free from defects in material and workmanship for three (3) months from initial date of purchase from an authorized dealer, with all other terms of this warranty applying except duration. **DreamLine™ Jetted and Steam Shower Cabins are not intended for commercial use and there is no warranty extended for these products for commercial use.** DreamLine™ is not responsible for loss of use or profit under any circumstances.

DreamLine™ hereby disclaims all warranties for products sold as a dealer or store displays. DreamLine™ hereby disclaims all warranties for products used outside of the United States or Canada whether expressed or implied, including but not limited to the implied warranties of merchantability and fitness for a particular purpose.

DreamLine™ will, at its election, repair, replace with product of equal value or make appropriate adjustment where DreamLine's analysis or inspection of warranty claim discloses any such defects occurring in normal usage within the warranty period. DreamLine warranty obligation shall be discharged upon tender of replacement or repair. Purchaser's refusal to accept the tender terminates warranty obligation.

Cost of freight for returning products to DreamLine™ for repairs or replacement under this limited warranty are the responsibility of the customer. Cost of freight associated with shipping of replacement product or parts to the customer may be charged to customer. Any product replaced or repaired during the warranty period will be covered only for the remaining period of the original warranty. In no event will DreamLine be liable for costs of repair or replacement of any installation material, including but not limited to tiles, marble, etc. **DreamLine™ is not responsible for installation, removal or reinstallation costs of any product requiring warranty services.**

Improper modification or alterations of any DreamLine™ products will void the warranty. Any DreamLine products repairs must be performed by either a DreamLine authorized agent or a licensed experienced professional contractor. This warranty shall not apply to breakage or damages caused by normal wear and tear, fault, carelessness, abuse, misuse, misapplication, improper maintenance, alteration or modification of the unit, as well as chemical or natural corrosion, accident, fire, flood, act of God or any other casualty. Improper care and cleaning will void the warranty. Never use cleaners containing abrasive cleansers, ammonia, bleach, acids, waxes, alcohol, solvents or other products not recommended for chrome or similar finish, glass or acrylic. This will void the warranty. For additional product maintenance instructions please refer to product installation manuals. The warranty does not extend to any non-DreamLine™ plumbing or components installed by installers, end users or by any party other than DreamLine™.

THE FOREGOING WARRANTIES ARE IN LIEU OF ALL OTHER WARRANTIES, EXPRESSED OR IMPLIED, INCLUDING BUT NOT LIMITED TO THE IMPLIED WARRANTIES OF MERCHANTABILITY AND FITNESS FOR A PARTICULAR PURPOSE. BATH AUTHORITY LLC ("DREAMLINE") AND/OR SELLER DISCLAIM ALL LIABILITY FOR SPECIAL, INCIDENTAL OR CONSEQUENTIAL DAMAGES. DREAMLINE™ IS NOT LIABLE FOR PERSONAL INJURIES OR DEATH TO ANY PERSON OR FOR ANY DIRECT, SPECIAL, INCIDENTAL OR CONSEQUENTIAL DAMAGE, LOSS OF USE, LOSS OF TIME, LOSS OF PROFITS, INCONVENIENCE, INCIDENTAL EXPENSES, LABOR OR MATERIAL CHARGES, OR ANY OTHER COSTS RESULTING FROM THE USE OF ITS PRODUCTS OR PERTAINING TO THE APPLICATION OF THE PRESENT WARRANTY, OR RESULTING FROM THE REMOVAL OR REPLACEMENT OF ANY PRODUCT OR ELEMENT OR PART COVERED BY THIS WARRANTY.

DreamLine™ is not responsible for product code compliance or for verifying code restrictions on installation or use and any such compliance is excluded from this warranty. DreamLine™ reserves the right to modify this warranty at any time - such warranty modification will not alter warranty applicable at the time of sale of the products in question. The warranty terms for specific products are:

SHOWER DOORS, SHOWER ENCLOSURES AND SHOWER BASES

DreamLine™ warrants shower doors, shower enclosures and shower bases to be free from defects in workmanship and materials under normal residential use for a period of five (5) years from the initial date of purchase by the owner/end-user, contractor or builder from an authorized dealer.

SHOWER CABINS (JETTED & STEAM)

DreamLine™ warrants glass, acrylic and finish to be free from defects in workmanship for a period of five (5) years from initial date of purchase by the owner/end-user, contractor or builder from an authorized dealer; and plumbing, electrical and steam generator components for a period of one (1) year from the initial date of purchase by the owner/end-user, contractor or builder from an authorized dealer.

SHOWER COLUMNS

DreamLine™ warrants shower columns to be free from defects in workmanship and materials under normal residential use for a period of one (1) year from the initial date of purchase by the owner/end-user, contractor or builder from an authorized dealer.

VANITIES AND VESSEL SINKS

DreamLine™ warrants bathroom vanities and vessel sinks to be free from defects in workmanship and materials under normal residential use for a period of one (1) year from the initial date of purchase by the owner/end-user, contractor or builder from an authorized dealer.

Some states/provinces do not allow limitations on how long an implied warranty lasts, or the exclusion or limitation of special, incidental or consequential damages, so these limitations and exclusions may not apply to you. This warranty gives you specific legal rights. You may also have other rights, which vary from state/province to state/province.



TEL: 866-731-8378 – 215-957-1411
FAX: 866-227-9245 – 215-893-1780

WWW.BATHAUTHORITY.COM

For more information on [DreamLine™ Shower Enclosure](http://www.BathAuthority.com) please visit www.BathAuthority.com